

FLOW DIVIDER INSTRUCTIONS (MODELS 1647890, 1647891 & 1647892)

The RGC flow divider accepts an input flow of 25 gpm at 3000 psi and reduces the flow and/or pressure to a factory preset level. The divider is a bypass type that returns excess flow to the tank side of the hydraulic power source.

Three models are available. Model 1647891 has hose whips and 1/2" quick disconnects (Q.D.'s) for flows under 10 gpm. 1647892 has hose whips and 3/4" quick disconnects (Q.D.'s) for flows over 10 gpm. Model 1647890 has 3/4" NPTF adapter fittings for flows over 10 gpm.

BEFORE INSTALLING THE FLOW DIVIDER

1. Read these instructions thoroughly before starting work. If you don't understand a procedure, call Reimann & Georger Corporation or its distributors for assistance.



CAUTION:
USE THE FLOW DIVIDER WITH OPEN CENTER TOOLS ONLY.

2. Insure that you have all the parts listed at the end of these instructions. If any parts are missing or damaged, return to place of purchase immediately.
3. Before making any hydraulic connections, inspect all hydraulic lines, fittings and hoses for leaks and risks of rupture as follows:
 - a. Inspect each hydraulic line, fitting, and hose for breaks, cracks, worn spots, bulges, chemical attack, kinks or any other damage. Never try to stop any detected leak with any body parts. Do not put your face close to suspected leaks. Hold a piece of cardboard close to suspected leaks and then inspect the cardboard for signs of hydraulic oil.
 - b. Replace a damaged line, fitting or hose immediately. Never repair the part.



WARNING:
LIQUID UNDER HIGH PRESSURE CAN PIERCE THE SKIN, CAUSING DEATH OR SERIOUS INJURY. IN CASE OF INJURY, GET IMMEDIATE MEDICAL ATTENTION.

MAKING HYDRAULIC CONNECTIONS

1. Use a 3/4" hose for flows over 10 gpm. A 1/2" hose may be used for flows under 10 gpm. The hydraulic hose must be rated for system pressure. When making connections, do NOT over stretch the hoses or bend them at a sharp angle.
2. Refer to Figure 1 during the following procedures:
 - a. The priority (regulated) output side of the flow divider has quick disconnect fittings marked "TOOL" that connect to hoses and tools manufactured by RGC. Use the "A" port as the pressure port and the "B" port as the return port.
 - b. The input side of the flow divider is stamped "SOURCE". The hydraulic circuit MUST have a system relief valve either in the hydraulic pump or in-line preceding the flow divider for system pressure protection. The pressure line from the hydraulic source is connected to the port stamped "P" (pressure). The return line port (tank line port) is stamped "T". This port is connected to the return side of the hydraulic power source.

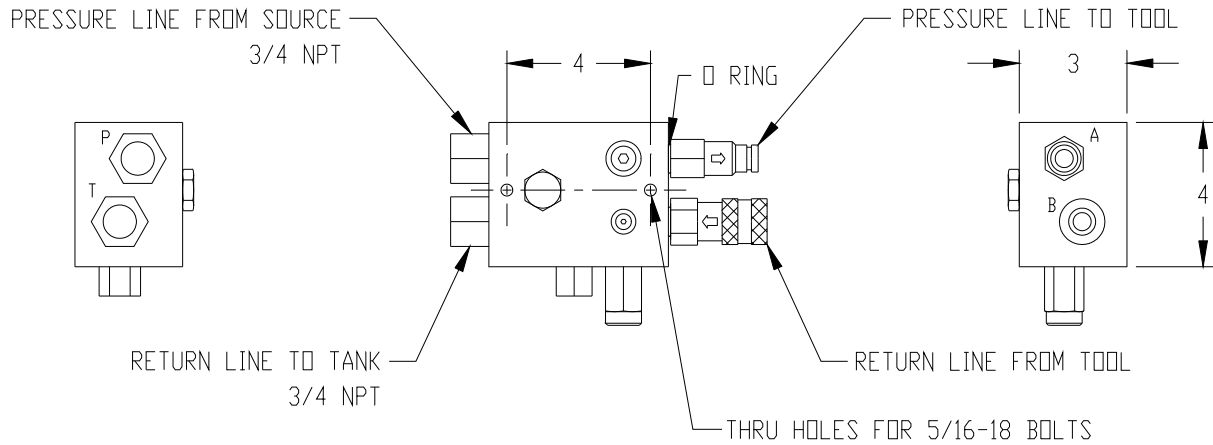


Figure 1
Flow Divider Connection Ports

3. Some hydraulic hand tools are very sensitive to back pressure. Hydraulic breakers, for example, will not operate properly if the back pressure exceeds 150 psi. Connecting the tool return hose directly into the flow divider can add excessive back pressure due to the power supply hydraulic components. When back pressure sensitivity is a problem, connect the tool return line directly to the power supply hydraulic tank. This is shown in Figure 2.

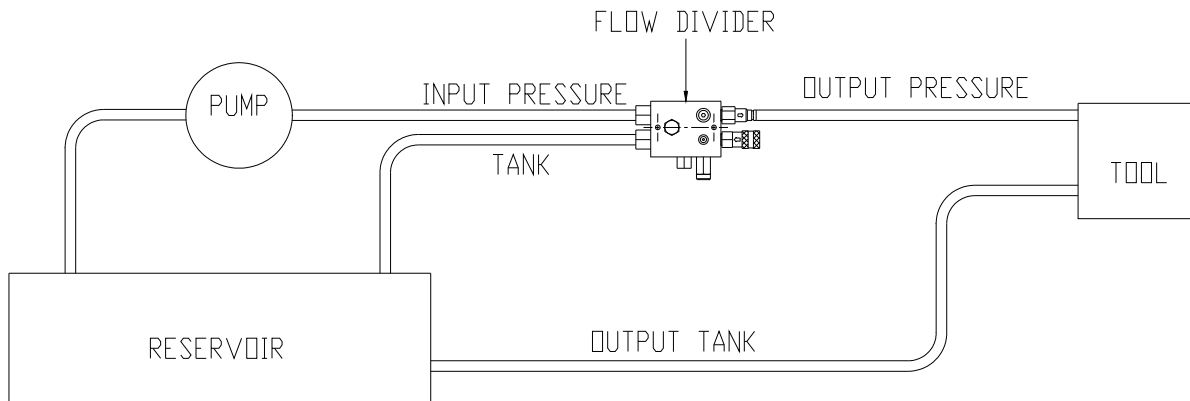


Figure 2
Recommended Hydraulic Connection for Back Pressure Sensitive Tools

PARTS LIST

Each item number on this parts list can be matched with the item number shown on the Figure 3 assembly drawing.

Item Number	Part Number	Quantity	Description
1	6001886*	2	1/2" COUPLING FEMALE
	6001888**		3/4" COUPLING FEMALE
2	6001885*	2	1/2" COUPLING MALE
	6001887**		3/4" COUPLING MALE
3	1697502*	2	1/2" HOSE ASSEMBLY (MODEL 1647891)
	1697503**		3/4" HOSE ASSEMBLY (MODEL 1647892)
4	5604681*	2	ADAPTER FITTING (MODEL 1647891)
	5604682**		ADAPTER FITTING (MODEL 1647892)
5	5604548	2	ADAPTER FITTING (MODEL 1647890)
6	6004789	1	MANIFOLD
7	6011365	1	RELIEF VALVE
8	6015306	1	PILOT LOGIC ELEMENT

* Source side shown for model 1647891 only.

** Source side shown for model 1647892 only.

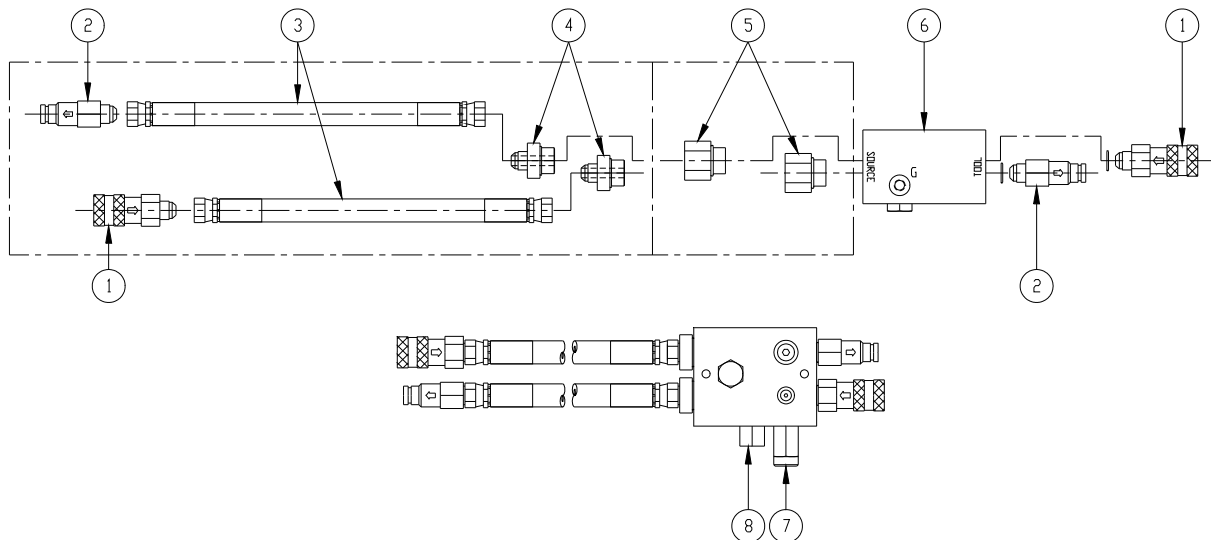


Figure 3
Flow Divider Assembly

LIMITED PRODUCT WARRANTY

**Reimann & Georger Corporation
Hoisting and Construction Products**

A. LIMITED WARRANTY

Reimann & Georger Corporation (the "Manufacturer") warrants to the original purchaser (the "Buyer") that all Reimann & Georger Hoisting and Construction products shall be free of defects in material and workmanship for a period of one (1) year from date of original purchase.

B. MANUFACTURER'S OBLIGATIONS

The Manufacturer's sole obligation under this Limited Warranty is the repair or, at the Manufacturer's discretion, the replacement of parts found to be defective. Parts and equipment must have authorization from the Manufacturer prior to return to the Manufacturer or repair by an authorized service person. Costs of transportation and other expenses connected with replacing or repairing parts are not covered under this Limited Warranty.

C. PARTS MANUFACTURED BY OTHERS

This Limited Warranty does not cover any parts manufactured by others. Such parts are subject to the warranty, if any, of their respective manufacturers, and are to be repaired only by a respective authorized service person for such parts. The Manufacturer shall have no obligation to undertake repairs of parts manufactured by others.

D. NO SPECIAL, INCIDENTAL, OR CONSEQUENTIAL DAMAGES

IN NO EVENT SHALL THE MANUFACTURER BE LIABLE TO THE BUYER OR ANY OTHER PERSON FOR ANY INDIRECT, SPECIAL, INCIDENTAL OR CONSEQUENTIAL LOSSES OR DAMAGES CONNECTED WITH THE USE OF THE PRODUCT UNDER THIS LIMITED WARRANTY. SUCH DAMAGES FOR WHICH THE MANUFACTURER SHALL NOT BE RESPONSIBLE INCLUDE, BUT ARE NOT LIMITED TO, LOST TIME AND CONVENIENCE, LOSS OF USE OF THE PRODUCT, THE COST OF A PRODUCT RENTAL, COSTS OF GASOLINE, TELEPHONE, TRAVEL, OR LODGING, THE LOSS OF PERSONAL OR COMMERCIAL PROPERTY, AND THE LOSS OF REVENUE.

E. NO LIABILITY IN EXCESS OF PURCHASE PRICE

IN NO EVENT SHALL THE MANUFACTURER'S OBLIGATIONS UNDER THIS LIMITED WARRANTY EXCEED THE PURCHASE PRICE OF THE PRODUCT.

F. NO EXTENSION OF STATUTE OF LIMITATIONS

ANY REPAIRS PERFORMED UNDER THIS WARRANTY SHALL NOT IN ANY WAY EXTEND THE STATUTES OF LIMITATIONS FOR CLAIMS UNDER THIS LIMITED WARRANTY.

G. WAIVER OF OTHER WARRANTIES

THE EXPRESS WARRANTIES SET FORTH IN THIS LIMITED WARRANTY ARE IN LIEU OF AND EXCLUDE ANY AND ALL OTHER WARRANTIES, EXPRESS OR IMPLIED, INCLUDING, BUT NOT LIMITED TO, THE IMPLIED WARRANTIES OR MERCHANTABILITY AND FITNESS FOR A PARTICULAR PURPOSE.

H. PROCEDURE FOR WARRANTY PERFORMANCE

If the product fails to perform to the Manufacturer's specifications, the Buyer must provide the Manufacturer with the applicable model and serial numbers, the date of purchase, and the nature of the problem.

I. ADDITIONAL EXCLUSIONS FROM THIS LIMITED WARRANTY. THIS LIMITED WARRANTY DOES NOT COVER ANY OF THE FOLLOWING:

1. Equipment which has been abused, damaged, used beyond rated capacity, or repaired by persons other than authorized service personnel.
2. Damage caused by acts of God which include, but are not limited to, hailstorms, windstorms, tornadoes, sandstorms, lightning, floods, and earthquakes.
3. Damage under conditions caused by fire or accident, by abuse or by negligence of the user or any other person other than the Manufacturer, by improper installation, by misuse, by incorrect operation, by "normal wear and tear", by improper adjustment or alteration, by alterations not completed by authorized service personnel, or by failure of product parts from such alterations.
4. Costs of repairing damage caused by poor or improper maintenance, costs of normally scheduled maintenance, or the cost of replacing any parts unless done as the result of an authorized repair covered by the one (1) year Limited Warranty.
5. Costs of modifying the product in any way once delivered to the Buyer, even if such modifications were added as a production change on other products made after the Buyer's product was built.

J. NO AUTHORITY TO ALTER THIS LIMITED WARRANTY

No agent, representative, or distributor of the Manufacturer has any authority to alter the terms of this Limited Warranty in any way.