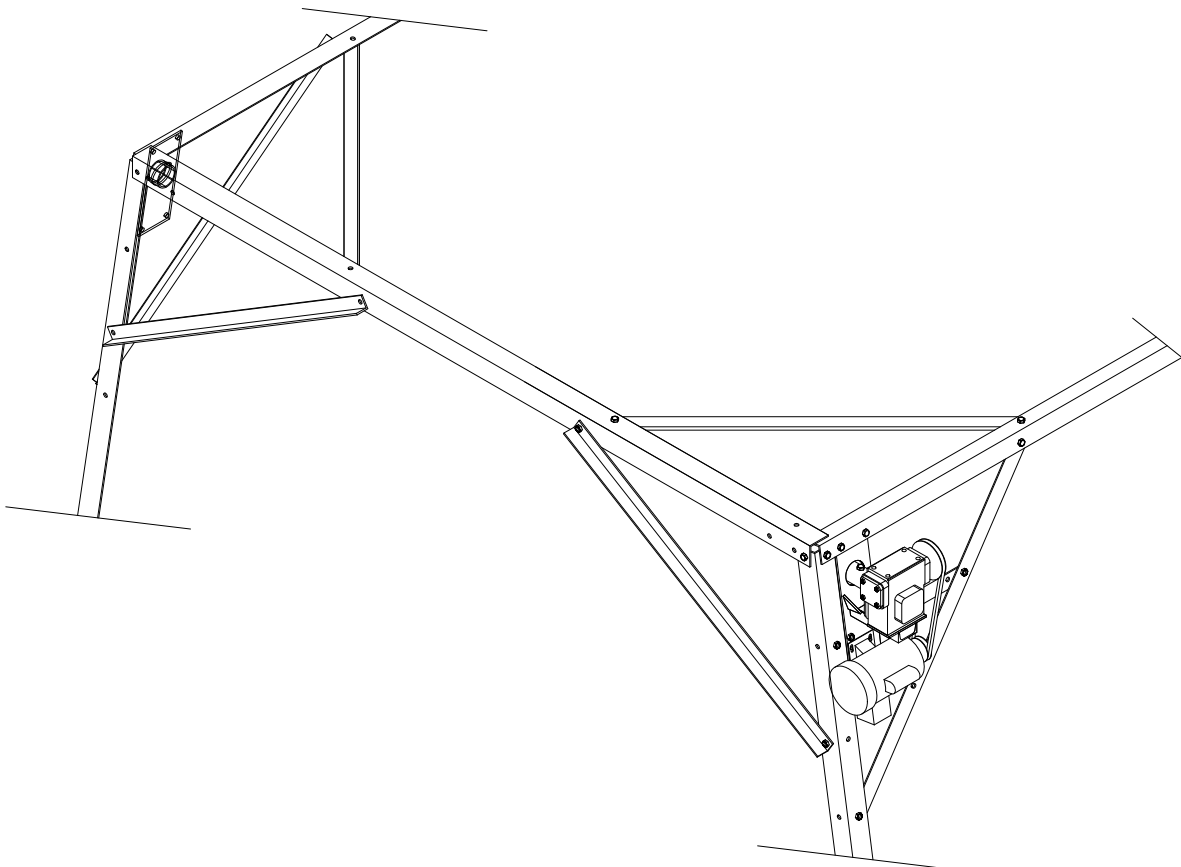




IB ELECTRIC DRIVE OVERHEAD LIFT INSTRUCTIONS



REIMANN & GEORGER CORPORATION
MARINE PRODUCTS
P/N 6112162

BUFFALO, NY

02/01/08

INSTALLATION

STEP #1

Refer to figure 1. Assemble the boat lift frame completely except for the 11E drum. The electric drive is now ready to be assembled at the desired corner. Bolt the Drive Frame (detail 25) to the matching holes in the side bar (top) and Drive Support (detail 15). Attach the Bearing (detail 13) to the opposite Side Bar. The Bearing Strap (detail 14) is added as support to the leg.

STEP #2

Pass the Drum (detail 11E) thru the far Bearing (detail 13). Position two Washers (detail 17) on the drum. Pass the Drum thru the Drive Frame (detail 25) and over the Coupling (detail 26). Fasten the drum to the coupling with a 1/2" x 3" bolt and lock nut. Secure the cotter in thru the drum outside of the washers.

STEP #3

The 3/4 HP electric motor is wired for 115V and has a GFCI built into the cord. Consult an Electrician for wiring to your local codes. Using the wrong size electrical wire can result in sufficient power or motor burn out. Always check voltage when the motor is under load.

STEP #4

Refer to figure 3. Attach the reversing switch to the IB frame leg (detail 1). With power supplied to the Electric Drive the boat lift is now ready for reeving. Use the reeving instructions given in the general instruction manual for the IB Boat Lift.

CAUTION: When operating the Electric Drive be sure to completely stop the motor before reversing direction!

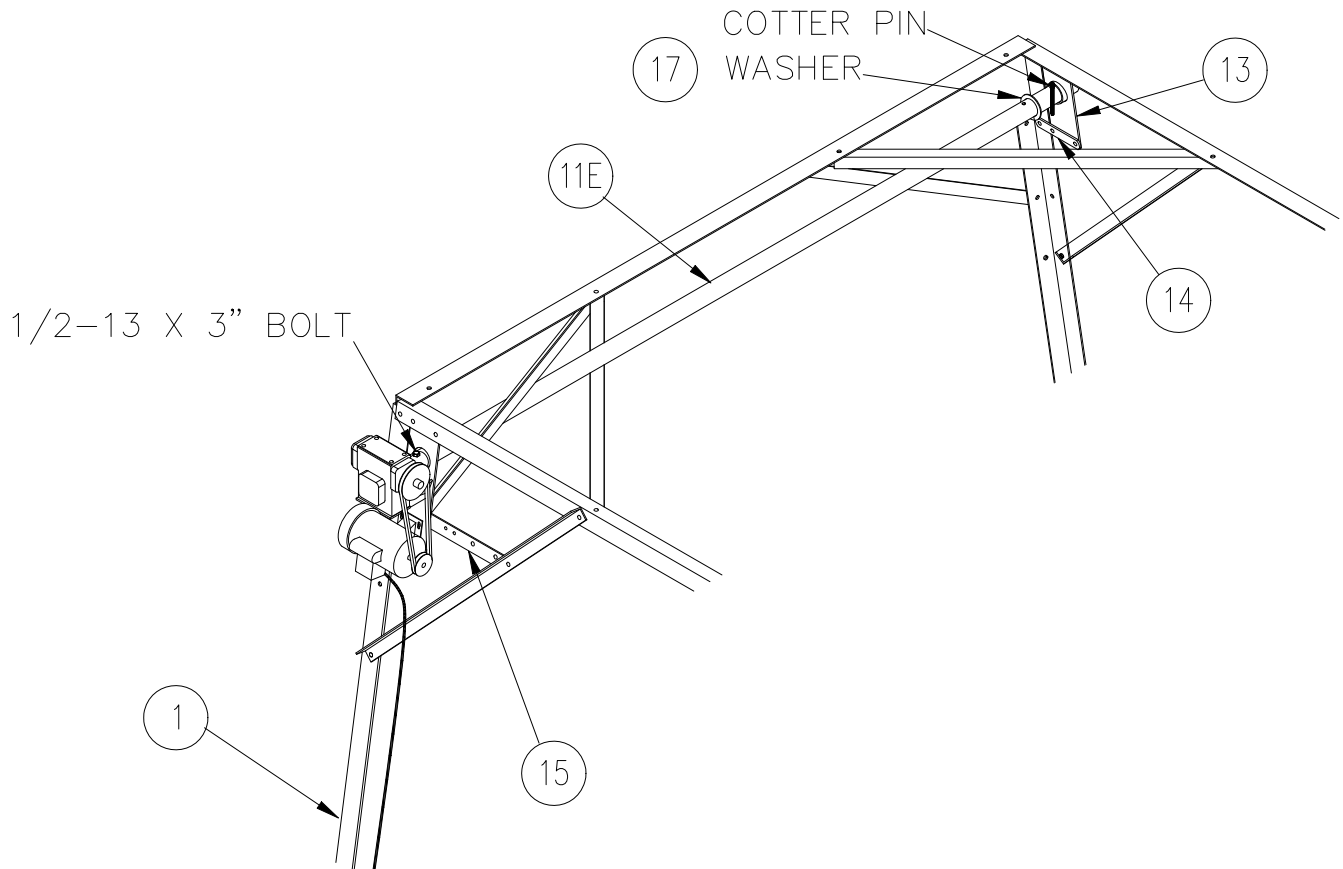


Figure 1
IB frame & Electric Drive Assembly

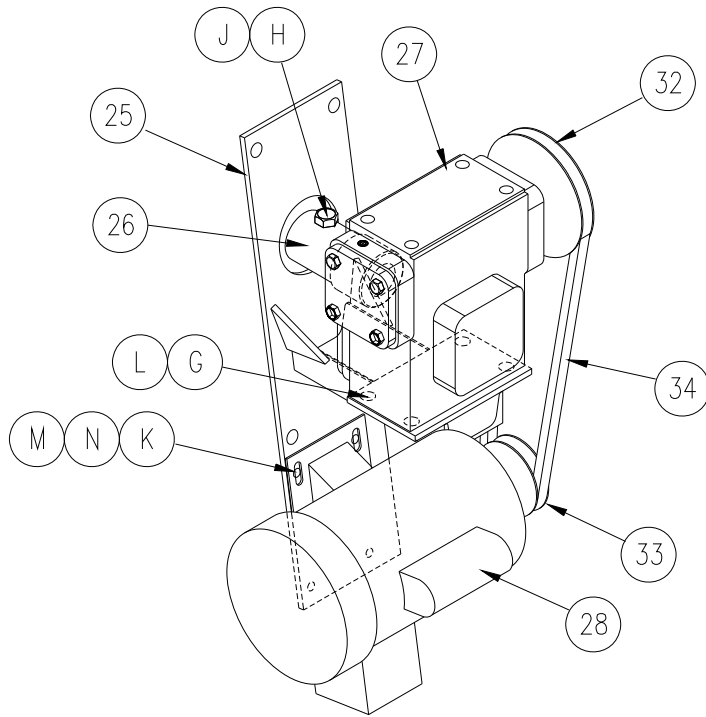


Figure 2
IB Electric Drive Assembly

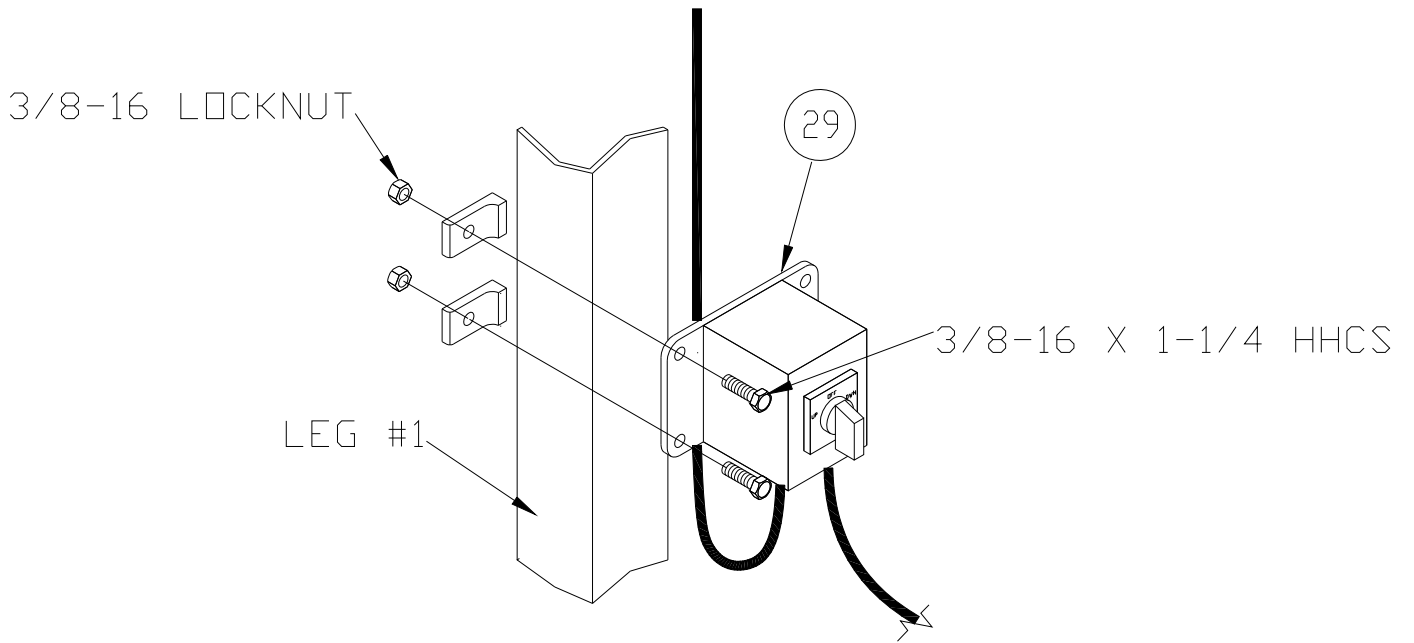


Figure 3
Reversing Switch Mounting

PARTS LISTS

Each item number or letter in the following parts lists can be matched with the item number or letter referred to in both the text and illustrations of Sections 3.1 through 3.9 of Chapter 3, Installation and Setup.



WARNING:

FAILURE TO APPLY A SUITABLE LUBRICANT TO THE MATING SURFACES OF STAINLESS STEEL THREADED FASTENERS MAY CAUSE GALLING AND/OR SEIZING OF ASSEMBLY.

#3213110 IBE ELECTRIC DRIVE

REF #	PART #	QTY	DESCRIPTION
25	3202700	1	IB DRIVE FRAME
26	3202726	1	IB DRUM COUPLING #26
27	6703128	1	GEAR REDUCER 50:1
28	6500684	1	MOTOR 3/4 HP 115/230V
29	3203106	1	IB REV SWITCH 15A
32	7303153	1	SHEAVE AS49 X 1"
33	7300614	1	SHEAVE AK30 X 5/8"
34	6703111	1	V-BELT A36
	6206990	1	DECAL POWER DR "OPER INSTRUCTIONS"
	6206211	1	TAG MODEL MARINE "BOAT LIFT"
G	5806280	4	1/2-13 X 1" HHCS CZP
H	5806288	1	1/2-13 X 3" HHCS CZP
J	5806142	1	1/2-13 HEX LOCKNUT CZP
K	5806222	4	5/16-18 X 3/4 HHCS CZP
L	5806412	4	1/2" EXT TOOTH WASHER CZP
M	5806375	4	5/16-18 HEX NUT CZP
N	5806402	4	5/16 EXT TOOTH WASHER CZP
	5806184	1	ALLEN WRENCH 5/32 X 4-1/8 LG
	5806187	1	ALLEN WRENCH 3/16 X 4-1/2 LG
	3213109	1	IBE ELECTRIC DRIVE COVER consists of:
	3205411	1	IB/OB GUARD
	6206974	1	DECAL "RGC LOGO"
	3203183	2	IB GUARD CLIP
	3203185	2	IB GUARD CLIP
	5806222	8	5/16-18 X 3/4" HHCS CZP
	5806392	4	1/4" USS FLAT WASHER CZP
	5806375	8	5/16-18 HEX NUT CZP
	5806402	8	5/16" EXT TOOTH WASHER