



# **VL & RAILWAY REMOTE CONTROL INSTRUCTIONS**

**REIMANN & GEORGER CORPORATION  
MARINE PRODUCTS  
P/N 6112081**

**BUFFALO, NY 14225  
11/28/07**

## TABLE OF CONTENTS

CHAPTER	TITLE	PAGE
<b>1</b>	<b>SAFETY .....</b>	<b>1</b>
1.1	Introduction .....	1
1.2	Safety Definitions .....	1
1.3	Equipment Safety Labels .....	1
1.4	Equipment And Personnel Safety .....	1
<b>2</b>	<b>INSTALLATION AND SETUP .....</b>	<b>3</b>
2.1	Pre-Installation Checks .....	3
2.2	Wiring Procedure .....	4
2.3	Mounting Remote Control Panel .....	4
2.3.1	Vertical Lift Mounting .....	4
2.3.2	Railway Remote Control Panel .....	6
<b>3</b>	<b>OPERATION .....</b>	<b>8</b>
3.1	Before Operating The Power Drive .....	8
3.2	Operating The Controls .....	8
3.2.1	On/Off Key Switch .....	8
3.2.2	Power-On Light .....	8
3.2.3	Up/Down Switch .....	8
3.2.4	Remote Hand Held Transmitter .....	8
3.2.5	Upper Limit Switch .....	9
3.3	Securing The Power Drive When Not In Use .....	9
<b>4</b>	<b>TROUBLESHOOTING .....</b>	<b>10</b>
<b>5</b>	<b>PARTS LISTS .....</b>	<b>11</b>
5.1	Vertical Lift RC Panel Assembly .....	11
5.2	Railway RC Panel Assembly .....	11

### LIMITED WARRANTY

## LIST OF FIGURES

FIGURE	DESCRIPTION	PAGE
2-1	Vertical Leg Mounting .....	5
2-2	Winch Bracket Mounting .....	5
2-3	Limit Switch Bracket Mounting .....	5
2-4	Mounting Remote Control .....	6
2-5	Mounting Limit Switch .....	7

# 1 SAFETY

## 1.1 INTRODUCTION

Your Reimann & Georger Corporation Marine Products Remote Control (RC) Panel has been engineered to provide remote operated lifting performance, long term economics and safety advantages that no other type can match. However, even a well-designed and well-built remote control can malfunction or become hazardous in the hands of an inexperienced and/or untrained user. Therefore, read this manual and related equipment manuals thoroughly before operating your remote control to provide maximum safety for all operating personnel, and to get the maximum benefit from your equipment.



### **WARNING:**

**DO NOT OPERATE THE REMOTE CONTROL OR THE ASSOCIATED BOAT LIFT WITHOUT STUDYING THE MANUALS FOR BOTH EQUIPMENT ITEMS. FAILURE TO DO THIS CAN LEAD TO EQUIPMENT MISUSE WITH RESULTING DAMAGE AND/OR SERIOUS PERSONAL INJURY. CONTACT YOUR RGC® MARINE DEALER IF YOU HAVE ANY QUESTIONS.**

## 1.2 SAFETY DEFINITIONS

A safety message alerts you to potential hazards that could hurt you or others or cause property damage. The safety messages or signal words for product safety signs are **DANGER**, **WARNING**, and **CAUTION**. Each safety message is preceded by a safety alert symbol and is defined as follows:

**DANGER:** Indicates an imminently hazardous situation which, if not avoided, **will** cause death or serious injury. This safety message is limited to the most extreme situations.

**WARNING:** Indicates a potentially hazardous situation which, if not avoided, **could** result in death or serious injury.

**CAUTION:** Indicates a potentially hazardous situation which, if not avoided, **may** result in minor or moderate injury. It may also be used to alert against unsafe practices and property-damage-only accidents.

## 1.3 EQUIPMENT SAFETY LABELS

These labels warn you of potential hazards that could cause injury. Read them carefully. If a label comes off or becomes illegible, contact a Reimann & Georger Corporation dealer for a free replacement.

## 1.4 EQUIPMENT AND PERSONNEL SAFETY

1. Never try operating anything other than a boat lift with this equipment.
2. Do not use the RC panel if it shows any signs of damage.
3. Do not allow persons other than authorized service personnel to repair this equipment.
4. The RC panel **MUST** be installed vertically to properly shed water. Installation in any other position will void the warranty.



### **WARNING:**

**WHEN INSTALLING THE RC PANEL, YOU MUST CONSULT A LICENSED ELECTRICAL CONTRACTOR TO SIZE THE WIRE TO YOUR PANEL AND BOAT LIFT. FAILURE TO DO THIS CAN CAUSE EQUIPMENT DAMAGE AND/OR PERSONAL INJURY.**

5. Do not operate the RC panel under the influence of drugs, alcohol, or medication.
6. Understand the use of all controls and connections provided with the drive being operated by the RC panel.

7. Completely remove any user or dealer installed locking devices on the lift before operating the RC panel.
8. A responsible adult must supervise operation of the lift at all times. Never leave the area while the lift is running. Keep people and pets clear during operation of the lift.
9. A clear visual path is required when using a remote transmitter to insure safety and optimum operation. Obstacles, radio frequency interference, and weak transmitter batteries will degrade the performance and range of your remote transmitter.
10. Do not continue lowering the platform with the RC panel after the boat floats freely. Excessive slack in winch cable may cause binding.

## 2 INSTALLATION AND SETUP

### 2.1 PRE-INSTALLATION CHECKS

1. Do not use the RC panel if it shows any signs of damage.
2. Proper function of the RC system is dependent upon several factors that are not controllable by the manufacturer. RGC is not responsible for the following:
  - Improper installation
  - Low battery
  - Natural occurrences
  - Use other than intended
  - Location of panel, receiver, or transmitter too close to interfering metal objects
  - Multiple RC panels within 15 feet of each other
  - Use in area with external interference such as radio, cell phone and TV towers, or a natural magnetic field
  - Blocked or shielded antenna
  - Other transmitter interference from cell phones, cordless phones, wireless systems, CB and mobile transmitters, computer and industrial equipment, electric motors, even fluorescent lights
3. This product has been supplied with stainless steel hardware to protect against a harsh marine environment and provide outstanding performance. Due to the chemistry and surface condition of stainless steel, there is a natural tendency for the hardware to “gall, lock up, or seize” during assembly. To prevent this from occurring, it is **highly recommended** that the anti-seize supplied in the hardware bag be applied to the mating surfaces of all stainless steel fasteners before assembly. Lubricants containing molybdenum disulfide, graphite, mica or talc may also be used.



#### **CAUTION:**

**DO NOT EXCEED THE MAXIMUM TORQUE RATING ON ALL BOLTS OF 20 FT-LBS.**



#### **WARNING:**

**FAILURE TO APPLY A SUITABLE LUBRICANT TO THE MATING SURFACES OF STAINLESS STEEL THREADED FASTENERS MAY CAUSE GALLING AND/OR SEIZING OF ASSEMBLY.**

4. A licensed electrician must do power hookup to the RC panel and make the connections between the panel and the lift motor. All wiring must be done according to the Local Electric Code. Wiring that does not meet these standards voids the panel warranty.



#### **WARNING:**

**ENSURE THAT THE ELECTRIC DRIVE HAS BEEN INSTALLED AND INSPECTED BY A CERTIFIED ELECTRICIAN IN ACCORDANCE WITH LOCAL ELECTRICAL CODES. THIS INSTALLATION MUST INCLUDE A PROPERLY WORKING GROUND FAULT CIRCUIT INTERRUPTER. (G.F.C.I.)**

## 2.2 WIRING PROCEDURE

1. All wires for connection to the electric drive and for incoming power connections must be connected to the leads supplied in the lower portion of the control panel outside the factory barrier. Do NOT tamper with or remove the factory barrier, as this will void your warranty.
2. It is very important to use the correct voltage and run the correct wire size to the RC panel. Wire sizing information is in the National Electric Code book used by most licensed electricians. Wire sizing is determined by the voltage being brought to the panel, the distance from your power source, and the amperage required by the lift motor. The panel is designed for 120V, single phase, 60 Hz or 240V, single phase, 60 Hz. Proceed as follows:
  - a. When connecting to 120V, wire nut the incoming neutral from the power source to the red and white wires labeled POWER from the RC panel. Wire nut the black wire from the RC panel labeled POWER to the incoming 120V line.
  - b. When connecting to 240V, which is recommended, connect the white wire labeled POWER from the RC panel to the incoming neutral, the black wire labeled POWER to the incoming 120V line, and the remaining red wire from the panel labeled POWER to the other leg of the incoming 120V source.



### **WARNING:**

**THE RC PANEL IS NOT A TRANSFORMER AND DOES NOT CHANGE ITS VOLTAGE INPUT. THE LIFT MOTOR MUST BE THEREFORE BE JUMPERED FOR THE SAME VOLTAGE AS THE RC PANEL. FAILURE TO DO THIS CAN CAUSE EQUIPMENT DAMAGE AND POSSIBLE PERSONAL INJURY.**

3. All electrical connections must be wire nuted securely in the junction box area. The wire colors used for the motors generally correspond to the colors used in the motor terminal boxes by the major manufacturers.
4. The following RC / Motor wiring instructions applies to motors listed:
  - ❖ Leeson – 1/4, 1, & 1-1/2 HP
  - ❖ Baldor – 1/2, 3/4 & 1HP

#### **RC MOTOR WIRES**

WHITE  
ORANGE  
BLACK  
RED  
GREEN

#### **VL MOTOR WIRES**

1 & 3  
2 & 4  
5  
8  
GROUND SCREW

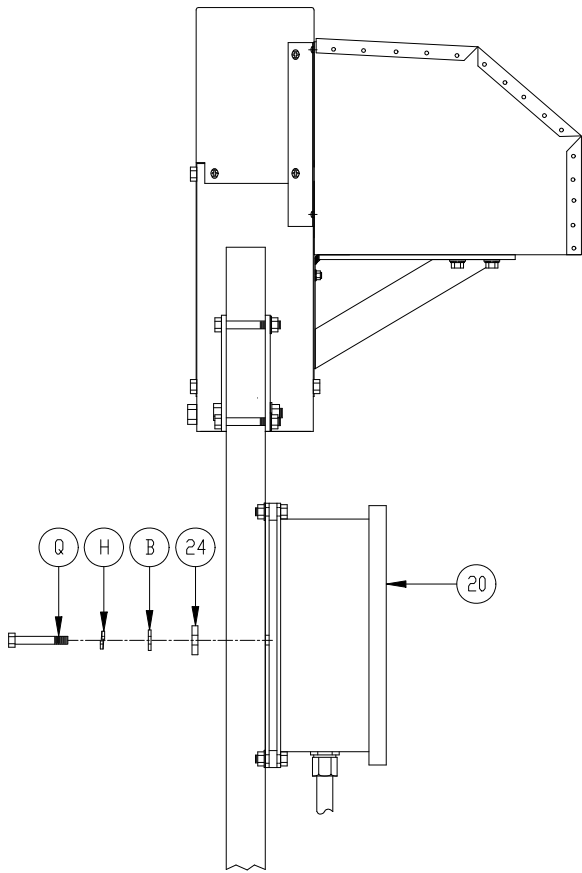
#### **RAILWAY MOTOR WIRES**

1 & 3  
2 & 4  
8  
5  
GROUND SCREW

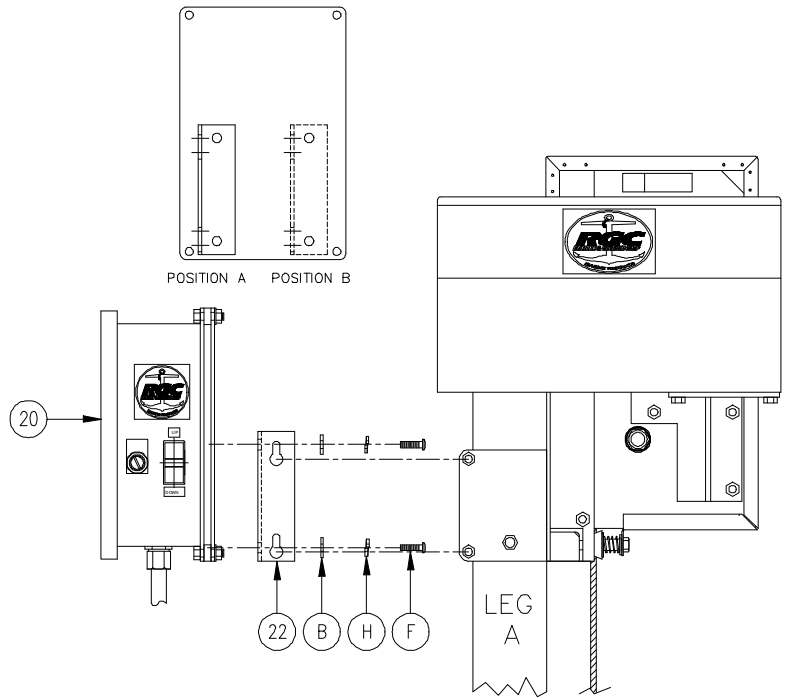
## 2.3 MOUNTING REMOTE CONTROL PANEL

### 2.3.1 VERTICAL LIFT MOUNTING

1. **Refer to Figures 2-1 and 2-2.** Mount the remote control to the vertical leg or the winch mounting bracket as shown. Wire the remote control motor wires to the VL motor junction box wires as noted above. When mounting to the vertical leg, the remote control may be positioned below the direct drive or above if the lift is equipped with a canopy extension leg. For canopy equipped lifts it is preferred that the remote control be mounted to the winch mounting brackets to provide greater protection from rainwater runoff from canopy.

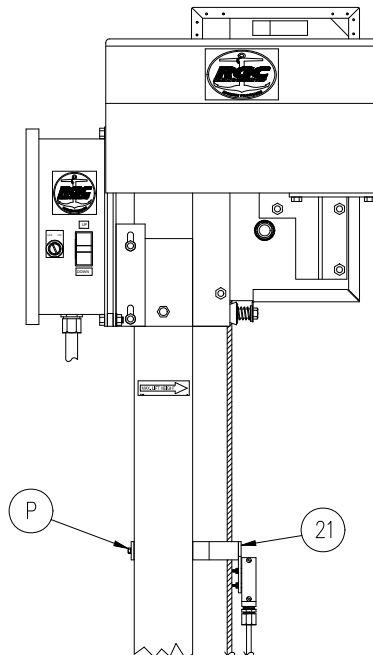


**Figure 2-1.**  
**Vertical leg Mounting**



**Figure 2-2.**  
**Winch Bracket Mounting**

2. **Refer to Figure 2-3.** Attach limit switch bracket assembly onto vertical leg A, approximately 10 inches below “Maximum Lift Height” decal. Fasten securely.

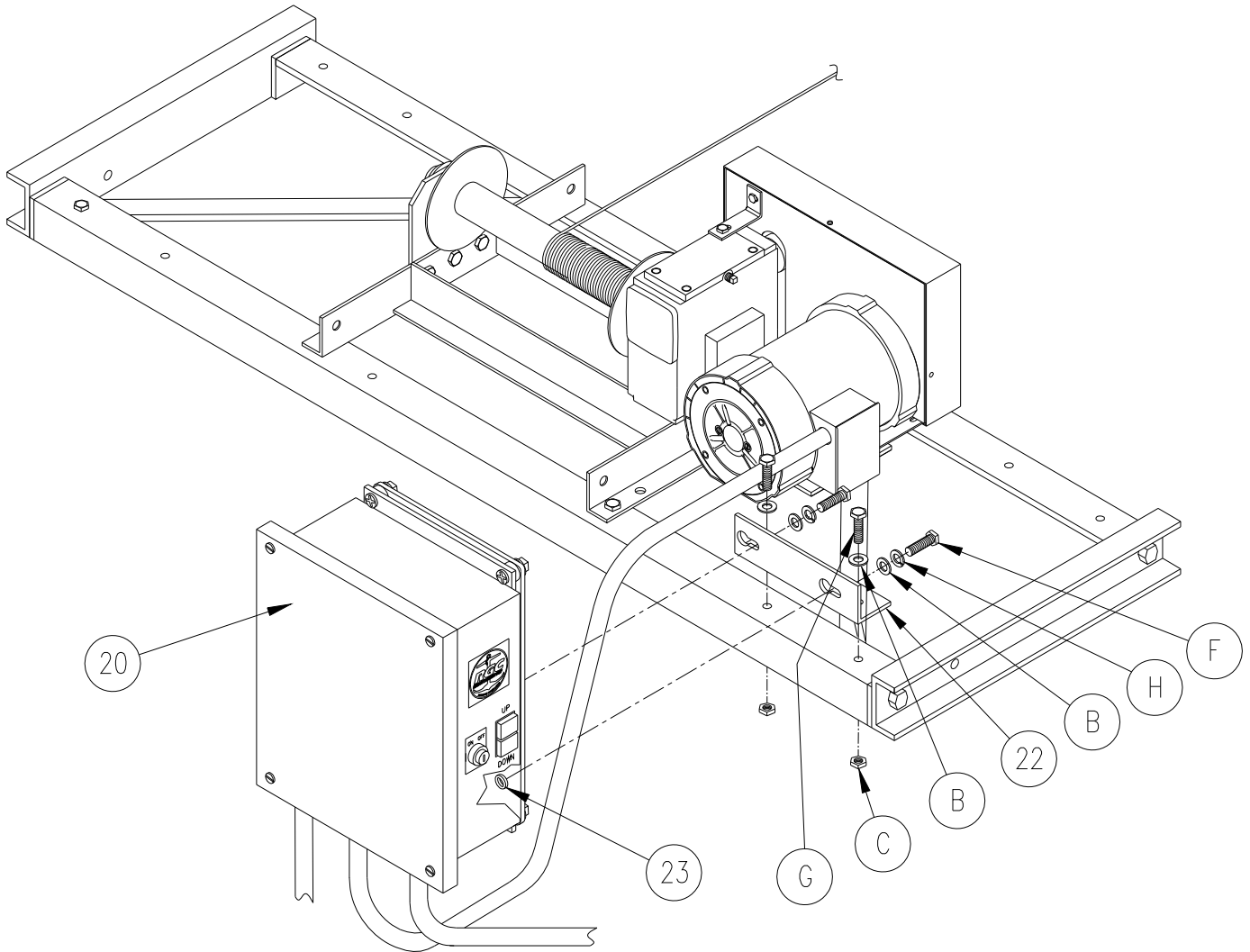


**Figure 2-3.**  
**Limit Switch Bracket Mounting**

3. Reposition limit switch bracket assembly after maximum lift height has been established for your boat and lift installation. Your maximum lift height must include rough water conditions and rising water tables.

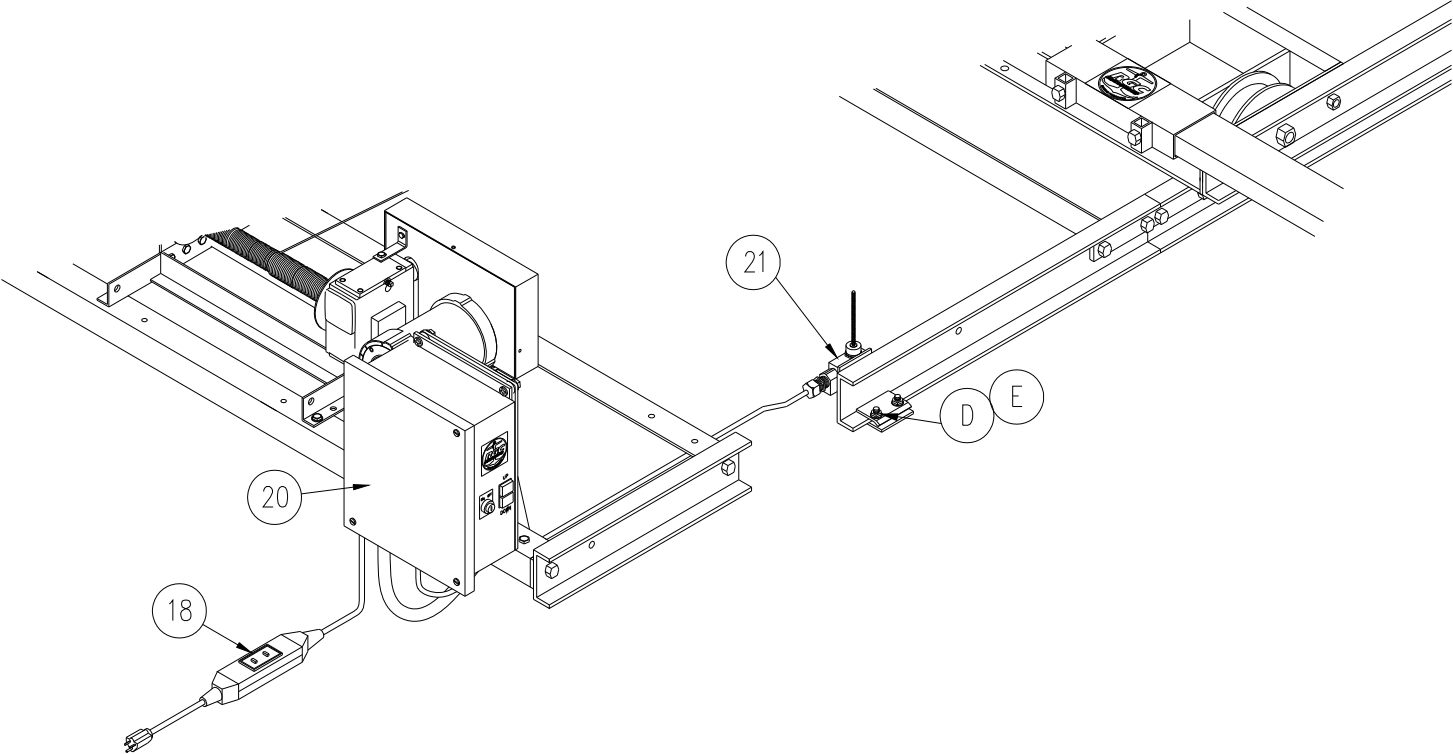
### 2.3.2 RAILWAY REMOTE CONTROL PANEL

1. **Refer to Figure 2-4.** Attach universal mounting bracket (22) to railway motor cross tie. Attach RC panel assembly (20) to mounting bracket using supplied hardware and lower set of threaded holes in RC mounting plate (23).



**Figure 2-4.**  
**Mounting Remote Control**

- 2. **Refer to Figure 2-5.** Fasten limit switch (21) to railway track, on motor side of power drive. Ensure switch is installed far enough away from power drive to prevent carriage or boat from contacting power drive causing damage to lift or boat.



**Figure 2-5.**  
**Mounting Limit Switch**

## 3 OPERATION

### 3.1 BEFORE OPERATING THE POWER DRIVE

1. Ensure that the power drive has been installed properly following the separate manufacturer's instructions.
2. Contact your authorized dealer if the winch mechanism fails to perform as described in your lift manual. Do NOT tamper with the winch mechanism and do NOT try to use your power drive.
3. Read and understand the lift instructions and ensure that everyone understands the proper operating procedure.



#### **WARNING:**

**THE BOAT MUST BE PROPERLY POSITIONED ON THE LIFT BEFORE DOING ANY RAISING OR LOWERING. FAILURE TO DO THIS CAN CAUSE EQUIPMENT DAMAGE AND/OR PERSONAL INJURY.**

4. It is important to identify your RC panel completely and accurately whenever ordering spare parts or requesting assistance in service. The side plate of the panel shows the model and serial numbers relating to the date of manufacture. Record the model and serial numbers below for future reference.

**MODEL** \_\_\_\_\_

**SERIAL NUMBER** \_\_\_\_\_

### 3.2 OPERATING THE CONTROLS

The RC panel has the following switches on the right side of the unit with engraving to indicate operation.



#### **WARNING:**

**DO NOT ALLOW ANYBODY TO BE IN THE BOAT OR NEAR THE LIFT WHILE OPERATING THE POWER DRIVE. THIS CAN CAUSE SERIOUS PERSONAL INJURY.**

#### 3.2.1 On/Off Key Switch

This switch allows the operator to lock off the RC panel when it is not in use or unattended. The key is removable in either position. The ON position allows you to operate your power unit with either the hand held transmitter or the manual switches. The OFF position makes the unit inoperable.

#### 3.2.2 Power On Light

This comes on when the key switch is in the ON position.

#### 3.2.3 Up/Down Switch

This switch manually raises or lowers the platform by depressing and holding for the intended direction.

#### 3.2.4 Remote Hand Held Transmitter

The hand held transmitter operates the lift only while either the UP or DOWN button is depressed. Press the DOWN button to lower the lift platform into the water. Press the UP button to raise the lift platform out of the water. The hand held transmitter only operates the lift while you are depressing and holding one of these buttons. Releasing either button during operation immediately stops the lift from moving. When operating the lift with the hand held transmitter, **you must allow a 5 second delay before changing direction** or the lift will continue to move in the same direction. If the transmitter is not working, please consult the troubleshooting guide in Chapter 4 before calling for a repair or replacement.

### **3.2.5 Upper Limit Switch**

The upper limit switch acts as a boat PARK position. The platform will ascend until it reaches its upper limit point and stop automatically.

### **3.3 SECURING THE POWER DRIVE WHEN NOT IN USE**

At the end of operation, secure the power drive to prevent unauthorized use of the lift. Never assume you will find the lift in the same condition that you left it. Proceed as follows:

1. Raise the lift platform to the desired height.
2. Lock out your RC panel with the On/Off Key Switch.

## 4 TROUBLESHOOTING

The following chart is intended to assist with troubleshooting the RC panel. While not all inclusive, the chart outlines the most common causes of a problem and the recommended course of action



### **WARNING:**

**THE CORRECTIVE ACTIONS LISTED IN THE FOLLOWING CHART MUST BE DONE BY A LICENSED ELECTRICIAN TO PREVENT EQUIPMENT DAMAGE AND POSSIBLE PERSONAL INJURY.**

SYMPTOM	CAUSE AND CORRECTIVE ACTION
Lift does not go up or down.	Check to see if you have incoming power—restore it if required.  Wrong voltage in use—refer to the wiring information in Chapter.
Lift goes up but not down.	Bad relay, contactor, or switch—replace as required.  Improper motor wiring—refer to Chapter 2 and the motor manufacturer’s instruction manual.
Remote unit only works in one direction.	If both lights work, refer to the corrective actions above.  If this test fails, the remote unit is bad—contact your authorized RGC dealer.
Remote unit does not work at all.	Bad battery—replace with a new one.
RC panel clicks but motor does not move.	Bad motor leads or motor—replace as required.  Improper wiring—refer to Chapter 2 and to the motor manufacturer’s instruction manual.
Transmitter only works close to the RC panel.	Tune transmitter as follows:  Remove battery cover and top cover of the hand held transmitter. There is a small brass screw above the UP/DOWN buttons on the remote unit.  With the UP or DOWN button depressed, stand about 50 feet from the panel.  Slowly turn the small brass screw clockwise or counterclockwise until the lift goes in that direction. <b>Do NOT</b> rotate the screw more than 360°.

## 5 PARTS LISTS

Each reference number or letter in the following parts lists can be matched with the reference number or letter referred to in both the text and illustrations.



### **WARNING:**

**FAILURE TO APPLY A SUITABLE LUBRICANT TO THE MATING SURFACES OF STAINLESS STEEL THREADED FASTENERS MAY CAUSE GALLING AND/OR SEIZING OF ASSEMBLY.**

#### **5.1 #3751402 VERTICAL LIFT REMOTE CONTROL PANEL ASSEMBLY**

REF #	PART #	QTY	DESCRIPTION
18	5406966	1	GFCI 15A IN LINE CORD
20	3670604	1	RC PANEL
21	3751404	1	VL LIMIT SWITCH ASSEMBLY W / BRKT
23	5033672	1	RC MTG PLATE ASSEMBLY
P	5896957	1	1/4-20 X 1/2 HHCS
-	9737332	1	UNIVERSAL RC MTG BRKT KIT
-			Consisting of:
22	5003740	1	RC UNIVERSAL MTG BRKT
24	3606922	1	TWO HOLE PLATE 5"
B	5896406	2	3/8 WASHER FLAT SAE
F	5896246	2	3/8-16 X 3/4" HHCS
H	5806243	2	3/8 SPLITLOCK WASHER
Q	5896268	2	3/8-16 X 2-3/4" HHCS

#### **5.2 #3320030 RAILWAY REMOTE CONTROL PANEL ASSEMBLY**

REF #	PART #	QTY	DESCRIPTION
18	5406987	1	GFCI 20A IN LINE CORD
20	3670604	1	RC PANEL
21	3351403	1	RAILWAY LIMIT SWITCH ASSEMBLY W / BRKT
23	5033672	1	RC MTG PLATE ASSEMBLY
B	5896406	2	3/8 WASHER FLAT SAE
C	5897016	2	3/8-16 NUT HEX NYLOCK
D	5806481	2	3/8-16 X 1" CARRIAGE BOLT
E	5806149	2	3/8-16 FLANGED HEX LOCKNUT
-	9737332	1	UNIVERSAL RC MTG BRKT KIT
-			Consisting of:
22	5003740	1	RC UNIVERSAL MTG BRKT
B	5896406	4	3/8 WASHER FLAT SAE
C	5897016	2	3/8-16 NUT HEX NYLOCK
F	5896246	2	3/8-16 X 3/4" HHCS
G	5896249	2	3/8-16 X 1 1/2" HHCS
H	5806243	2	3/8 SPLITLOCK WASHER

## **TWO YEAR LIMITED WARRANTY**

### **Reimann & Georger Corporation Marine Products**

This product is warranted by RGC® Marine Products to the original purchaser to be free from defects in material and workmanship under normal use for a period of two years from the date of purchase.

During the warranty period, and upon proof of purchase, the product will be repaired or replaced (with the same or similar model) at our option, without charge for either parts or labor when serviced at RGC® Marine Products.

Upon completion of repair, the unit will be returned to the customer freight prepaid. The warranty will not apply to this product if it has been misused, abused, or altered.

NEITHER THIS WARRANTY OR ANY OTHER WARRANTY, EXPRESS OR IMPLIED, INCLUDING IMPLIED WARRANTIES OF MERCHANTABILITY, SHALL EXTEND BEYOND THE WARRANTY PERIOD. NO RESPONSIBILITY IS ASSUMED FOR ANY INCIDENTAL OR CONSEQUENTIAL DAMAGES. SOME STATES DO NOT ALLOW EXCLUSION OR LIMITATION OF INCIDENTAL OR CONSEQUENTIAL DAMAGES, SO THE ABOVE LIMITATIONS OR EXCLUSIONS MAY NOT APPLY TO YOU.

This warranty gives you specific legal rights, and you may also have other rights which vary from state to state.