



83 ANDERSON RD.  
BUFFALO, N.Y. 14225-4905

MODEL 2000 BEACHER RAILWAY

# SAFETY PRECAUTIONS

---

After reading the assembly instructions and just prior to putting your boat into the lift, please read and understand fully the following safety precautions. If you have any questions please contact the dealer from which you purchased the unit or call the factory at 716-892-0224.

- 1) Prior to use, read and know the instructions and ensure that everyone understands the proper operating procedure.
- 2) Install the lift so that it sets level. Binding may cause damage and/or personal injury.
- 3) All electric drive units must be inspected and installed by a certified electrician in accordance to local electrical codes.
- 4) Ensure that a ground fault interrupter is installed and working properly if you are in fact using an electric drive.
- 5) Ensure that all bolts and nuts are fastened securely prior to use.
- 6) Keep people clear during operation of the lift. Do not allow anyone to swim or play near the lift.
- 7) Do not exceed the maximum lift capacity for this may lead to serious personal injury and/or equipment failure.
- 8) Never attempt to stop the handwheel should it start to freewheel. This can cause serious personal injury.
- 9) Do not reach through the spokes of the handwheel for any reason.
- 10) Completely lower the lift when performing any type of maintenance or replacement of parts.
- 11) Do not work in or on the boat when it is up on the lift.
- 12) Inspect the cables periodically for fraying and the cable ends to ensure that they are securely fastened. Replace immediately if frayed or worn.
- 13) Check the pulleys to ensure that they spin freely. If not, replace them.
- 14) If slings are used, examine for deterioration. Replace immediately if worn.
- 15) Padlock the handwheel to the post when unattended.
- 16) A boat which has water in it from a rain storm could exceed the recommended weight capacity for the lift. Be sure to remove the plug while the boat is up on the lift. Make certain to replace the plug prior to the launching of your boat.

Thank you for your purchase of the R&G MARINE BEACHER RAILWAY 2000 lift. If you should have any problems or questions please contact your local dealer, he/she shall be more than happy to assist you. We welcome your comments and the opportunity to discuss your particular boat lift needs with you.

THANK YOU-  
R&G MARINE

Your BR 2000 is shipped to you in three bundles and one carton of parts. Please examine your shipment upon receipt and make certain that it is intact and complete. If any part is damaged or missing due to shipping make the appropriate note on the delivery receipt and freight bill. Call the delivering carrier about filing the proper claims.

PART#	REF#	QTY	PART DESCRIPTION
			03549 TIE BUNDLE
02418	2002	11	Track Cross Ties
02426	2009	4	Stake Braces
02430	2013	3	Stern/Aft Braces
			03550 CARTON OF PARTS
02421	2005	2	End/Carriage Stops
02438	2029	4	Track Locks
02415	2017	4	Wheels: Carriage
06473		1	Spray Can/Blue Paint- 5 oz. series 601
		1	Instructions w/Warranty (in envelope)
			06530 BAG OF BOLTS
03107	2032	1	1/2"-13 X 2 1/4" Eyebolt
06142		4	1/2"-13 Locknuts w/Nylon Insert
06178		4	3/8"-16 X 5" Flat Head Machine Screws
06247		80	3/8"-16 X 1" HHCS Bolts
06249		8	3/8"-16 X 1 1/2" HHCS Bolts
06253		10	3/8"-16 X 2 1/2" HHCS Bolts
06290		4	1/2"-13 X 3 1/2" HHCS Bolts
06377		102	3/8"-16 Hex Nuts
06379		1	1/2"-13 Hex Nut
06400		1	1/2" SAE Washers
06406		2	3/8" SAE Washers
			03551 TRACK BUNDLE
02417	2001	8	Track Sections
02420	2004	6	Track Splice Plates
02427	2010	2	Stake Braces

(continued)

03552 CARRIAGE BUNDLE			
02419	2003	2	End Tie Bars
02422	2006L	2	Carriage Stakes - Long
02423	2006S	2	Carriage Stakes - Short
02424	2007	2	Carriage Sides
02425	2008	2	Carriage Ends
02428	2011	4	Stake Braces
02429	2012	2	Stern/Aft Supports
02431	2014	2	Stern/Aft Support Extensions
02432	2015	2	Stern/Aft Cradles - Wood
02433	2016	1	Bow/Forward Cradle
02435	2018	2	Carriage Side Angle Braces
06499		4	5'2" PVC Boat Protector/Stake Covers



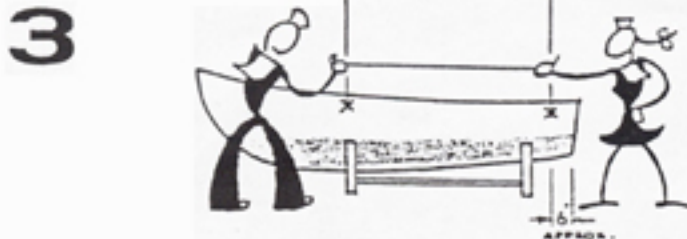
# BEACHER - MODEL 2000

## Erecting and Operating INSTRUCTIONS

**1** Your Beacher is shipped to you as two bundles of steel bars, one carton of parts, plus one additional bundle for each additional four

lengths or less of track. The Hand Winch is shipped as one wheel, one bundle of steel bars and one carton of parts. The Power Winch is shipped as one carton.

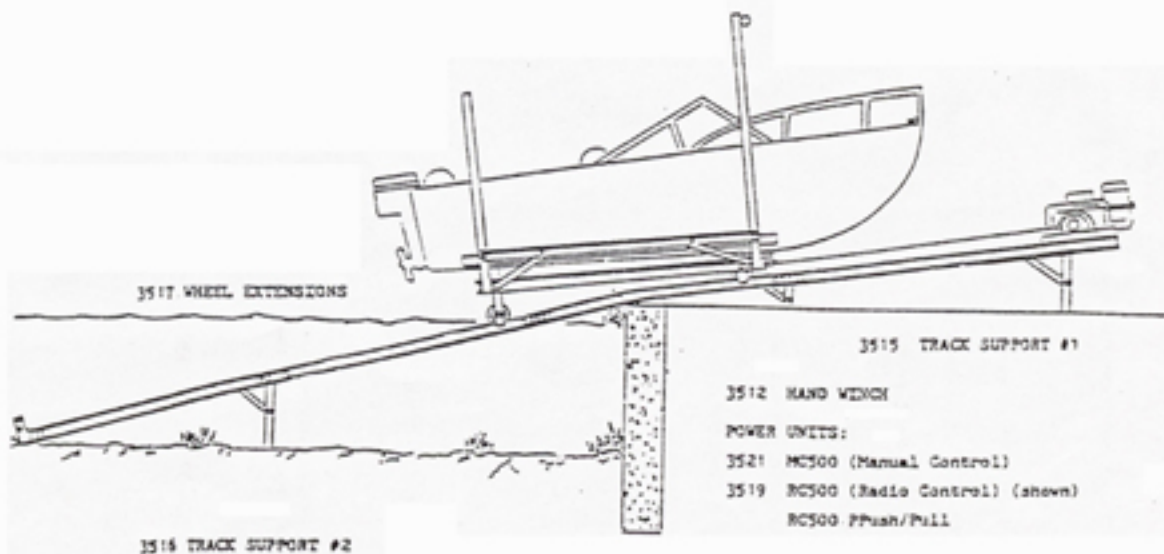
**2** Open each package and check your parts list to make sure you have all parts before you start assembly.



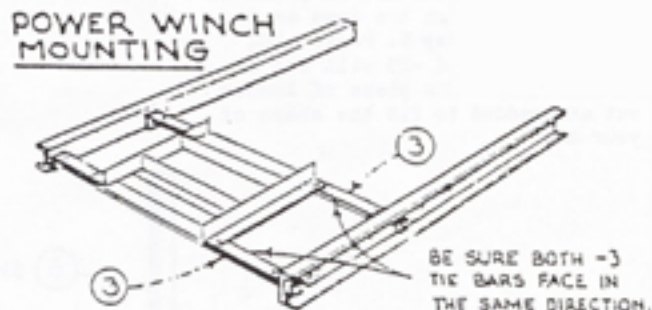
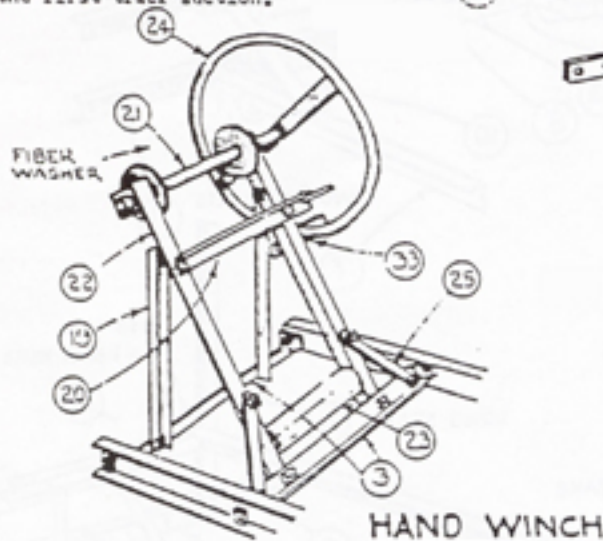
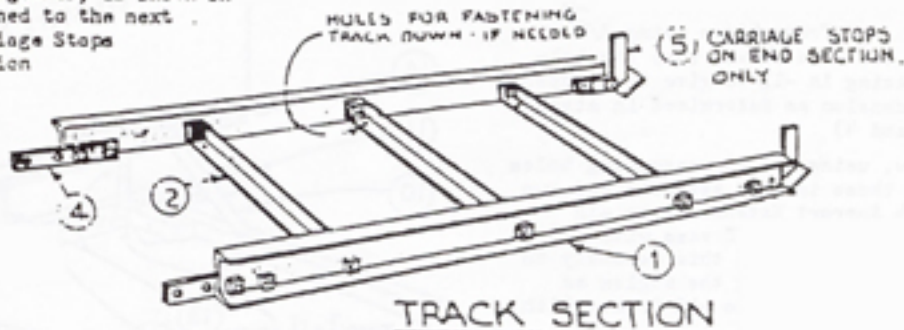
The forward and aft stakes of your Beacher are 10 ft. apart. The aft cradle is in line with the aft stakes. The proper placement of an outboard boat on the carriage is such that the transom projects about 6 inches past the aft cradles. From this position determine where the forward stakes will come on your boat and measure the beam at this point so that you can set the stakes.

**4** TRACK MOUNTING is normally done by laying the track directly on the ground, allowing it to follow the general contour. However, if the ground is rough the track will have to be blocked up for proper support. This blocking should be done at each joint as well as along the rails, depending upon the load. Bricks and concrete blocks make very good supports for the rails when the height is not too great. If more than a gentle change is required in the contour

be sure to plan the bends to take place at the joints and not in the center of the section. An example would be, when running a track over a retaining wall the joint should be at the edge of the wall because this is where it will bend most readily. Do not exceed 5° bend at any one joint. If the track is spanning a large distance, such as from a high retaining wall to the beach, we can furnish adjustable track supports in two sizes, 12" to 24" or 27" to 36" in height.

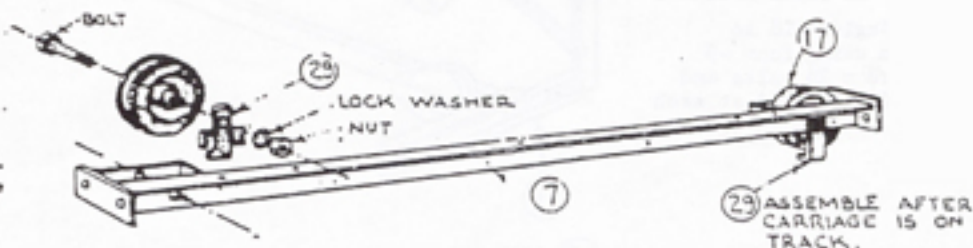


**5** TRACK SECTIONS are bolted together, as shown in sketch. Each section is joined to the next with splice plates -4. Carriage Stops -5 are mounted on last section to keep carriage from running off of the rails and also to prevent rails from digging in when being pushed into the water. The hand and power winch mountings shown in the sketches are mounted on the first track section.

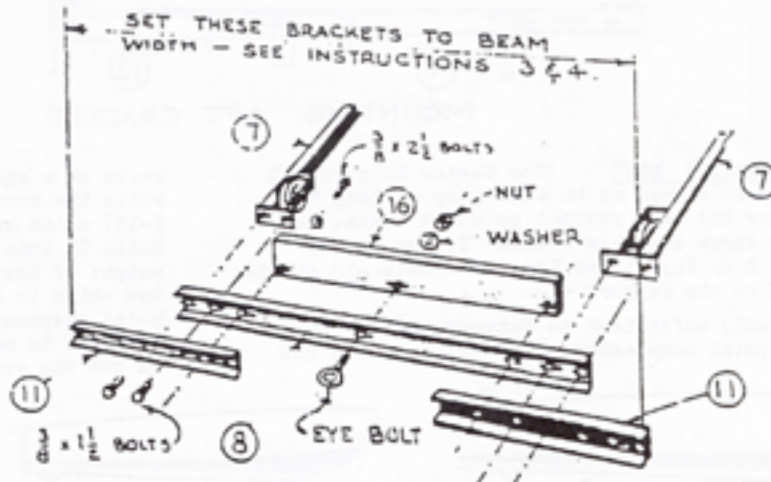


**CARRIAGE ASSEMBLY**

**6** ASSEMBLE WHEELS in Frame Sides -7. Make sure that the nut is on the outside of the carriage so Track lock -29 can be added or removed from the carriage without disturbing the wheel assembly.



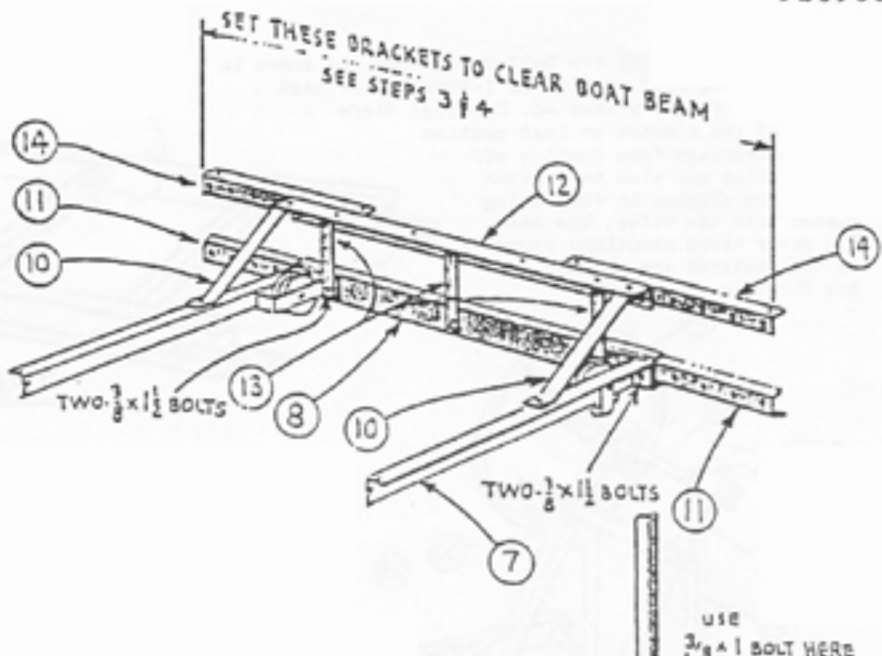
**7** ASSEMBLING BOY END of carriage. Bolt the Stake Brackets -11 in place, using the holes which bring the stakes nearest to the beam dimension as measured in instructions #3 and #4. Use 3/8 x 1 1/2 bolts to attach Frame Sides -7. The Forward Cradle -16 is bolted directly to -8 using 3/8 x 2 1/2 bolts. For optional mounting of -10 see instructions #12.



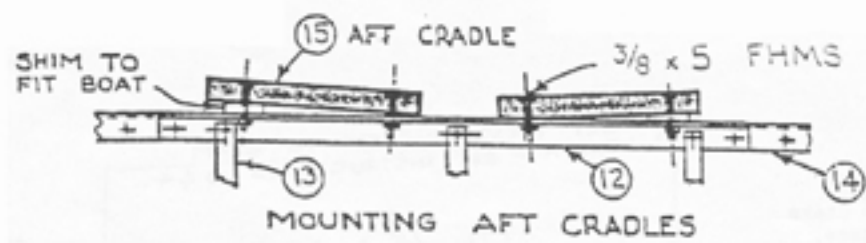
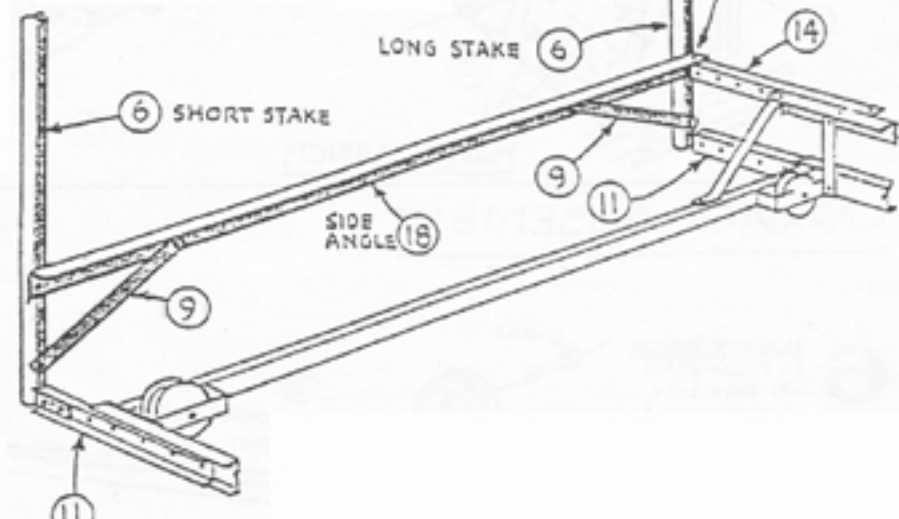
**8** ASSEMBLING STERN END  
 Bolt Stake Brackets -11 and Frame End -8 to -7 Frame Sides using 3/8 x 1 1/2 bolts as shown. (Use the hole spacing in -11 to give the proper dimension as determined in steps 3 and 4)

Now, using the corresponding holes as those in -11, assemble the two -14 Support Extensions to -12 Support and -13 Braces with 3/8 x 1 bolts. Fasten this assembly to Frame End facing the angles as shown. Mount two -10 Braces with 3/8 x 1 bolts.

*Note* If this Beacher is to be used in shallow water and you want the Stern Cradle as low as possible assemble the Stern the same as the Bow Assembly, step 8. Parts -10, -12, -13, -14 and -15 will not be used. Simply add a piece of lumber cut and padded to fit the shape of your boat.



**9** ATTACHING -6 STAKES  
 Mount two Short Stakes on the bow end and two Long Stakes on the stern end with two 3/8 x 1 bolts thru the end of the -11 Stake Bracket. Assemble Side Angles -18 to Stakes as shown using four -9 Braces. Two 3/8 x 2 1/2 bolts and one 3/8 x 1 bolt are used at each corner.



**10** SUPPORTING BOAT The Center Support -12 is used either as an auxiliary on long boats or as the main support on short boats. See the three sketches below. If you choose either Fig. 2 or Fig. 3 the Forward Cradle -16 should be attached to the Support -12.

It is generally sufficient to support outboard boats on a three point suspension. The keel near the bow

rests on a single piece of lumber at one point while the transom rests on two separate pieces (-15) which are shimmed to fit the angle of the hull. In this way the transom which carries the weight of the motor has two supports while the bow which is lighter rests on one. A three point suspension permits the boat plenty of latitude in mooring. It will protect the hull to pad the wood with carpeting.



FIG. 1

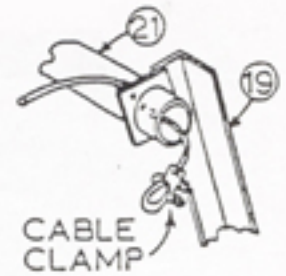


FIG. 2



FIG. 3

**1** **HAND WINCH** is furnished wire rope. Insert the end of the wire rope through the hole in the -21 Drum. Pull it through far enough to make a small loop and fasten with the cable clamp furnished(see sketch). The rope is fed under the -23 Roller and attached to the -32 Eye Bolt on the Carriage. Face the -24 Handwheel and turn it in a clockwise direction to pull the boat in. A pivoting bar on the -20 Horizontal Support can be flipped to project through the Handwheel to keep it from reversing. The use of a chain and padlock is advised to prevent unauthorized use. To control the speed of launching, hold the -33 Wood Brake against the -24 Handwheel. If the pull on the Handwheel is too hard, it can be reduced in half by adding a pulley to the front of the Carriage and attach the end of the rope to the Hand Winch frame.

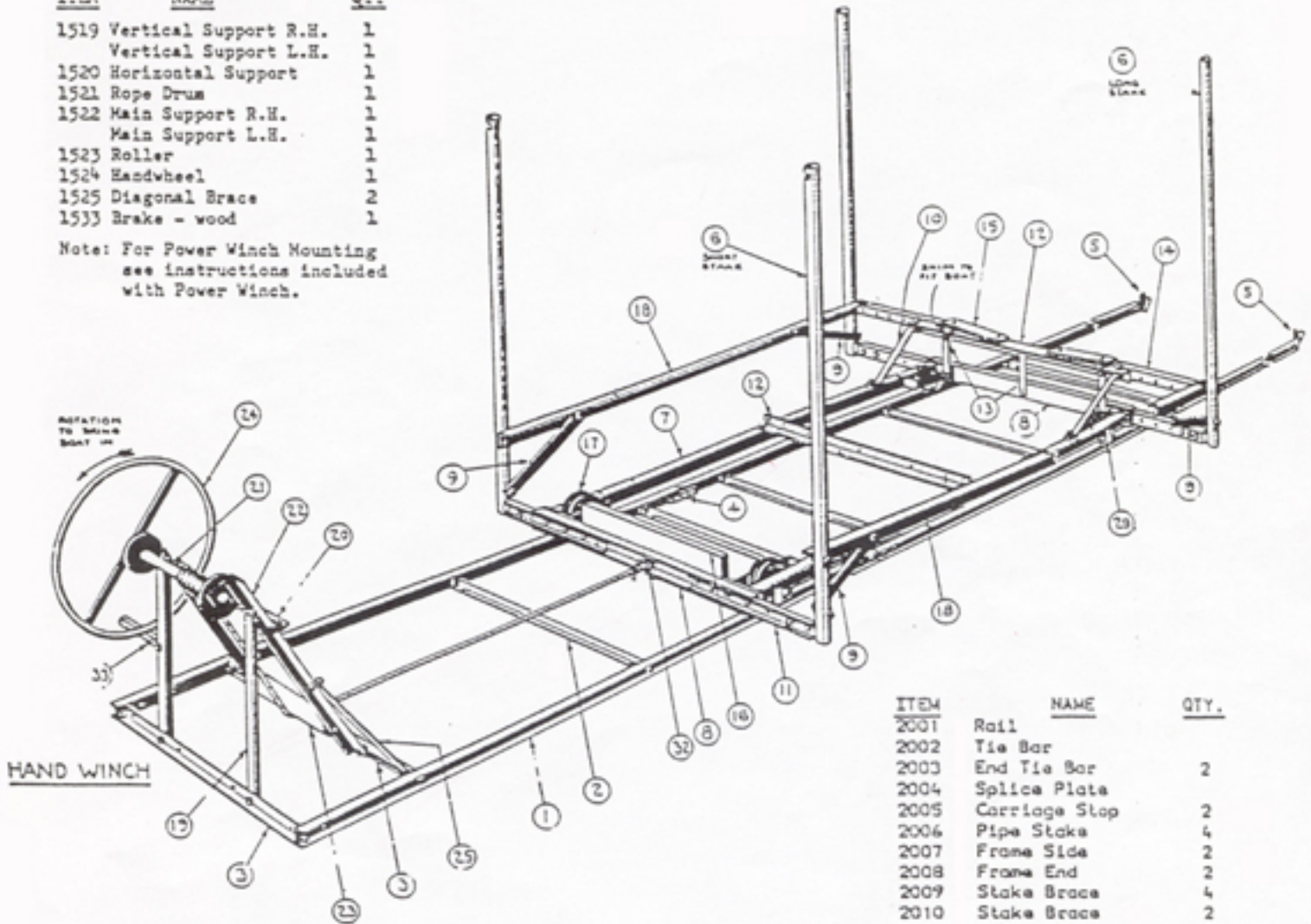


## BEACHER RAILWAY - MODEL 2000

### HAND WINCH

ITEM	NAME	QTY
1519	Vertical Support R.H.	1
	Vertical Support L.H.	1
1520	Horizontal Support	1
1521	Rope Drum	1
1522	Main Support R.H.	1
	Main Support L.H.	1
1523	Roller	1
1524	Handwheel	1
1525	Diagonal Brace	2
1533	Brake - wood	1

Note: For Power Winch Mounting see instructions included with Power Winch.



ITEM	NAME	QTY.
2001	Rail	
2002	Tie Bar	
2003	End Tie Bar	2
2004	Splice Plate	
2005	Carriage Stop	2
2006	Pipe Stake	4
2007	Frame Side	2
2008	Frame End	2
2009	Stake Brace	4
2010	Stake Brace	2
2011	Stake Bracket	4
2012	Aft & Center Suppt.	2
2013	Aft Brace	3
2014	Aft Suppt.Extension	2
2015	Aft Cradle-Wood	2
2016	Forward Cradle-Wood	1
2017	Wheel	4
2018	Side Angle	2
2029	Track Lock	4
2032	Eye Bolt	1

