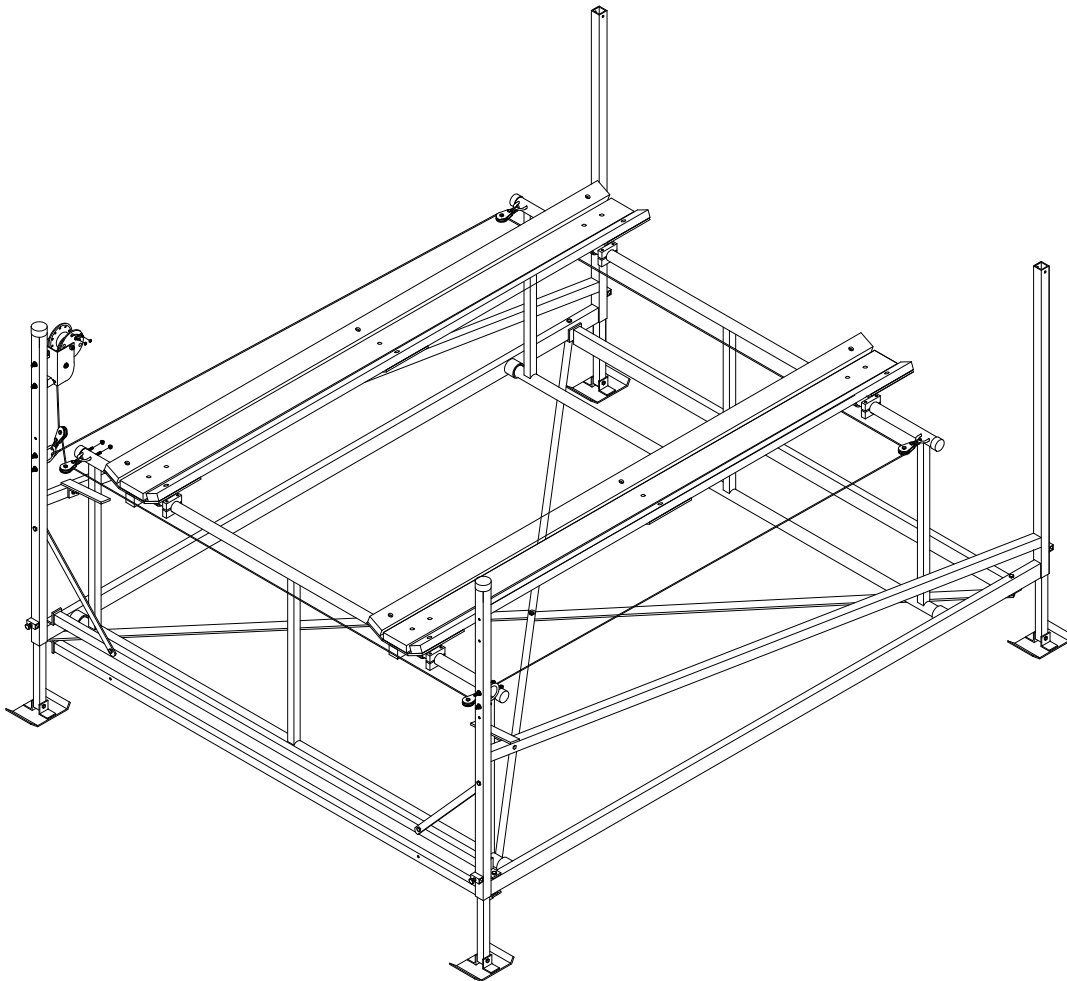




PL PONTOON CRADLE INSTRUCTIONS



REIMANN & GEORGER CORPORATION
MARINE PRODUCTS
P/N 6112010

BUFFALO, NY
08/02/10

TABLE OF CONTENTS

CHAPTER	TITLE	PAGE
1	SAFETY	1
1.1	Introduction	1
1.2	Safety Definitions	1
1.3	Equipment Safety Labels	1
1.4	Safety Rules	1
2	INSTALLATION AND SETUP	3
2.1	Pre-Installation Checks	3
2.2	Tools Required	3
2.3	Pontoon Bunk Support Assembly	3
2.4	Pontoon Bunk Mounting Plate Assembly	5
2.5	Pontoon Bunk Side Assembly	6
3	PARTS LISTS.....	7
3.1	PL1200 Pontoon Bunk Kit	7
3.2	PL1200W Pontoon Bunk Kit	7
3.3	PL2000 Pontoon Bunk Kit	7

LIST OF FIGURES

FIGURE	DESCRIPTION	PAGE
2-1.	Pontoon Bunk Support Assembly	4
2-2.	Pontoon Bunk Mounting Plate Assembly	5
2-3.	Pontoon Bunk Side Assembly	6

1 SAFETY

1.1 INTRODUCTION

Your Reimann & Georger Corporation Marine Products PL Pontoon Cradle Kit is designed to lift boat by pontoons rather than deck and aid in proper positioning of boat on the lift. Your Pontoon Cradle Kit is well designed and well built. However, like any other equipment, it can malfunction or become hazardous in the hands of an inexperienced and/or untrained user. Therefore, read this manual and your related PL Lift manual, and related equipment manuals thoroughly before installing this kit and operating your lift to provide maximum safety for all operating personnel, and to get the maximum benefit from your equipment.

1.2 SAFETY DEFINITIONS

A safety message alerts you to potential hazards that could hurt you or others or cause property damage. The safety messages or signal words for product safety signs are **DANGER**, **WARNING**, and **CAUTION**. Each safety message is preceded by a safety alert symbol and is defined as follows:

DANGER: Indicates an imminently hazardous situation which, if not avoided, **will** cause death or serious injury. This safety message is limited to the most extreme situations.

WARNING: Indicates a potentially hazardous situation which, if not avoided, **could** result in death or serious injury.

CAUTION: Indicates a potentially hazardous situation which, if not avoided, **may** result in minor or moderate injury. It may also be used to alert against unsafe practices and property-damage-only accidents.

1.3 EQUIPMENT SAFETY LABELS

These labels warn you of potential hazards that could cause injury. Read them carefully. If a label comes off or becomes illegible, contact a Reimann & Georger Corporation dealer for a replacement.

1.4 SAFETY RULES



WARNING:

DO NOT INSTALL THIS KIT AND OPERATE THE LIFT WITHOUT READING BOTH THIS MANUAL AND YOUR PL LIFT MANUAL. FAILURE TO DO THIS CAN LEAD TO EQUIPMENT MISUSE WITH RESULTING DAMAGE AND/OR SERIOUS PERSONAL INJURY. CONTACT YOUR RGC® MARINE DEALER IF YOU HAVE ANY QUESTIONS.

1. Do not install this kit without first replacing any damaged or defective parts.
2. The Pontoon kit does not increase the rated capacity of the lift. Never use the lift beyond its rated capacity. This can damage the kit assembly, lift, and/or boat with resulting serious personal injury.
3. Never try using any part of this kit in an application for which it was not designed.
4. Do not weld or otherwise modify any part of this kit. Such alterations may weaken the structural integrity of the lift and void the warranty.
5. Do not try installing the pontoon brackets with the weight of the boat on the lift. This can cause equipment damage and/or personal injury.
6. The following precautions must be observed when lifting any part of this equipment:
 - a. Be sure of your footing.
 - b. Bend your knees and lift with your legs.
 - c. Hold the equipment section close to your body when lifting.
7. After the Pontoon kit is installed, the safety checks in Steps 8 through 25 must be performed on your lift prior to operation. Details on these checks are given in your PL lift manual.

8. Before allowing anyone to operate the lift, be sure they fully understand the proper operating procedure.
9. Do not operate the lift under the influence of drugs, alcohol, or medication.
10. Keep people and pets clear during operation of the lift.
11. Keep fingers and clothing clear of all moving parts.
12. Never allow people in the boat any time it is suspended above the water on the platform.



WARNING:

DO NOT STAND OR WALK ON THE PLATFORM WHILE IT IS IN ANY RAISED POSITION. THIS CAN CAUSE SERIOUS PERSONAL INJURY.

13. Do not allow anyone to swim or play under, near or on the lift at any time.
14. Insure that all bolts and nuts are fastened securely on both this kit and the lift prior to operation.
15. Insure that the frame is level and square.
16. Completely remove any user or dealer installed locking devices before operating the lift.
17. The boat must be secured on the lift before raising or lowering. Failure to do this can cause equipment damage and/or serious personal injury.
18. Check the lift periodically for frayed cables and/or binding pulleys. If any pulley binds, replace it immediately.
19. Do not try making any adjustments on the lift during operation.
20. Contact your dealer if the winch mechanism fails to perform as described in the Operation chapter of your PL lift manual.
21. Never tamper with the winch mechanism. This can cause equipment damage.
22. When using a motorized friction drive, understand the use of all controls and connections provided with it.



WARNING:

ALL ELECTRIC DRIVES MUST BE INSTALLED AND INSPECTED BY A CERTIFIED ELECTRICIAN IN ACCORDANCE WITH LOCAL ELECTRICAL CODES. THIS INSTALLATION MUST INCLUDE A PROPERLY WORKING GROUND FAULT CIRCUIT INTERRUPTER. (G.F.C.I.)

23. Never use the lift to hang or store any auxiliary equipment such as boating hardware.
24. The handwheel must turn clockwise when raising the platform and counter-clockwise when lowering the platform. If the platform operates in the reverse sense, you have reeved the winch incorrectly. You MUST follow the winch reeving instructions in your PL lift manual to prevent equipment damage and/or personal injury. The brake pawl must click during platform raising, indicating that the brake is operative. The self-activating brake mechanism must provide a controlled lowering of the platform.



WARNING:

NEVER RELEASE THE BRAKE PAWL OF THE WINCH. THIS CAN TRIGGER AN UNCONTROLLED SPIN-DOWN OR “FREEWHEEL” OF THE HANDWHEEL. IF FREEWHEELING OCCURS, NEVER TRY TO STOP IT AS THIS CAN CAUSE SERIOUS PERSONAL INJURY.

25. Padlock the handwheel to the post and lock out your friction drive (if so equipped) to prevent unauthorized use when your lift is left unattended.

2 INSTALLATION AND SET UP

2.1 PRE-INSTALLATION CHECKS

1. Do not assemble this kit or any other component of the lift if any part appears to be damaged.
2. Do not weld or other wise modify any portion of the lift. Such alterations may weaken the structural integrity of the lift and void the warranty.
3. This product has been supplied with stainless steel hardware to protect against a harsh marine environment and provide outstanding performance. Due to the chemistry and surface condition of stainless steel, there is a natural tendency for the hardware to “gall, lock up, or seize” during assembly. To prevent this from occurring, it is **highly recommended** that the anti-seize supplied in the hardware bag be applied to the mating surfaces of all stainless steel fasteners before assembly. Lubricants containing molybdenum disulfide, graphite, mica or talc may also be used.



CAUTION:

DO NOT EXCEED THE MAXIMUM TORQUE RATING ON ALL BOLTS OF 20 FT-LBS.



WARNING:

FAILURE TO APPLY A SUITABLE LUBRICANT TO THE MATING SURFACES OF STAINLESS STEEL THREADED FASTENERS MAY CAUSE GALLING AND/OR SEIZING OF ASSEMBLY.

2.2 TOOLS REQUIRED

1. 9/16” Wrench or Adjustable Wrench.
2. Drill Motor.
3. 7/16” drill bit.
4. 1” flat wood bit for counter sinking holes.

Please NOTE; If additional cushioning is desired carpet can be wrapped around the wood. (both are supplied by customer).



CAUTION:

AT A MINIMUM, THIS KIT SHOULD BE INSTALLED USING THIN CARPET, RUBBER, OR CORK SHEETING AS A BARRIER BETWEEN PRESSURE TREATED WOOD AND ALUMINUM MOUNTING BRACKETS. FAILURE TO INSTALL A BARRIER COULD SHORTEN THE LIFE EXPECTANCY OF THIS KIT OR PONTOON MATERIAL. CONTACT YOUR RGC® MARINE DEALER IF YOU HAVE ANY QUESTIONS.

2.3 PONTOON BUNK SUPPORT ASSEMBLY

1. For ease of assembly, raise the lifting arms to approximately waist level to provide easy access to wood bunk mounting locations.
2. **Refer to Figure 2-1.** Set distance of each lift arm bunk-mounting bracket a minimum of 10” from center of bow and stern lifting arm. Then mount a pair of half round clamps, approximately 2” away from each side of pivoting bunk-mounting bracket as shown in **Detail K**. When fastening the clamps together, use clamp with pressed in hex nuts as bottom clamp. Final adjustment of bunks to fit your boat is done after assembly is complete and lift is positioned in water.



CAUTION:

WHEN FASTENING CLAMPS TO LIFTING AND TRAILING ARMS, INSURE THAT THE ATTACHED BUNK BEARING HOUSINGS DO NOT CAUSE ANY BINDING WHEN THE PLATFORM IS RAISED OR LOWERED.

3. Position a pontoon bunk support tube (3) on top of the bow and stern pivoting bunk-mounting brackets. Align double holes of pontoon bunk support tube with matching holes in pivoting bunk mounting brackets as shown in **Detail J**. Temporarily secure with a single carriage bolt (A) and hex nut (D) at each end of support tube (3).
4. Using pontoon support tube as a pattern, cut (if needed) a pressure treated 2 x 6 (customer supplied) to same length as support tube. Transfer all bolt hole locations from support tube to wood. Insure width of wood is centered on bunk support tube and flush to both ends.
5. Drill all bolt hole locations using the 7/16" drill bit. As an option you may wish to countersink the holes so the head of carriage bolt (A) lies below the surface of the wood. In this instance, countersink 1/4" deep using 1" flat wood bit.
6. Repeat steps 3 thru 5 for other bunk assembly and then remove wood from both support tubes.

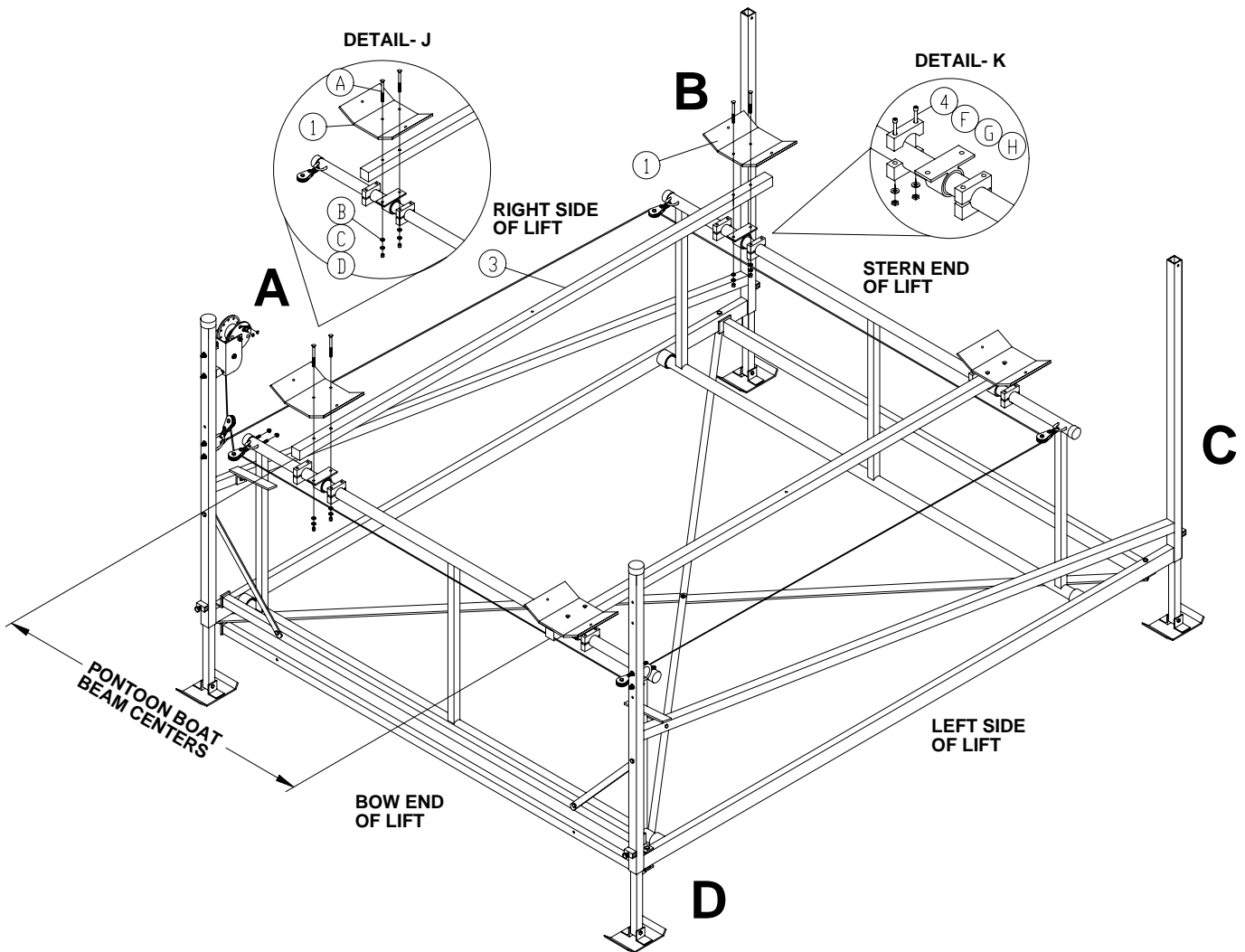


Figure 2-1.
Pontoon Bunk Support Assembly

2.4 PONTOON BUNK MOUNTING PLATE ASSEMBLY

1. Refer to Figure 2-2. Position a four-hole pontoon bunk mounting plate (1) on top of pontoon bunk support tube at each pair of holes.
2. Position a three-hole pontoon mounting plate (2) at each single hole in pontoon bunk support tube.
3. Place a barrier material between pressure treated wood and aluminum mounting plates as noted in Section 2.2 above.
 - If you choose to cover the wood entirely with carpeting, fold a few inches under the 2" x 6" wood with the seam kept on the bottom of wood. Attach carpet to wood with staples.
4. Securely attach the 2" x 6" wood, pontoon bunk mounting plates, and pontoon bunk support tube to the pivoting bunk-mounting brackets using carriage bolt (A), flat washer (B), split-lock washer (C), and hex nut (D) for each hole.
5. Repeat steps 1 thru 4 for other pontoon bunk assembly.

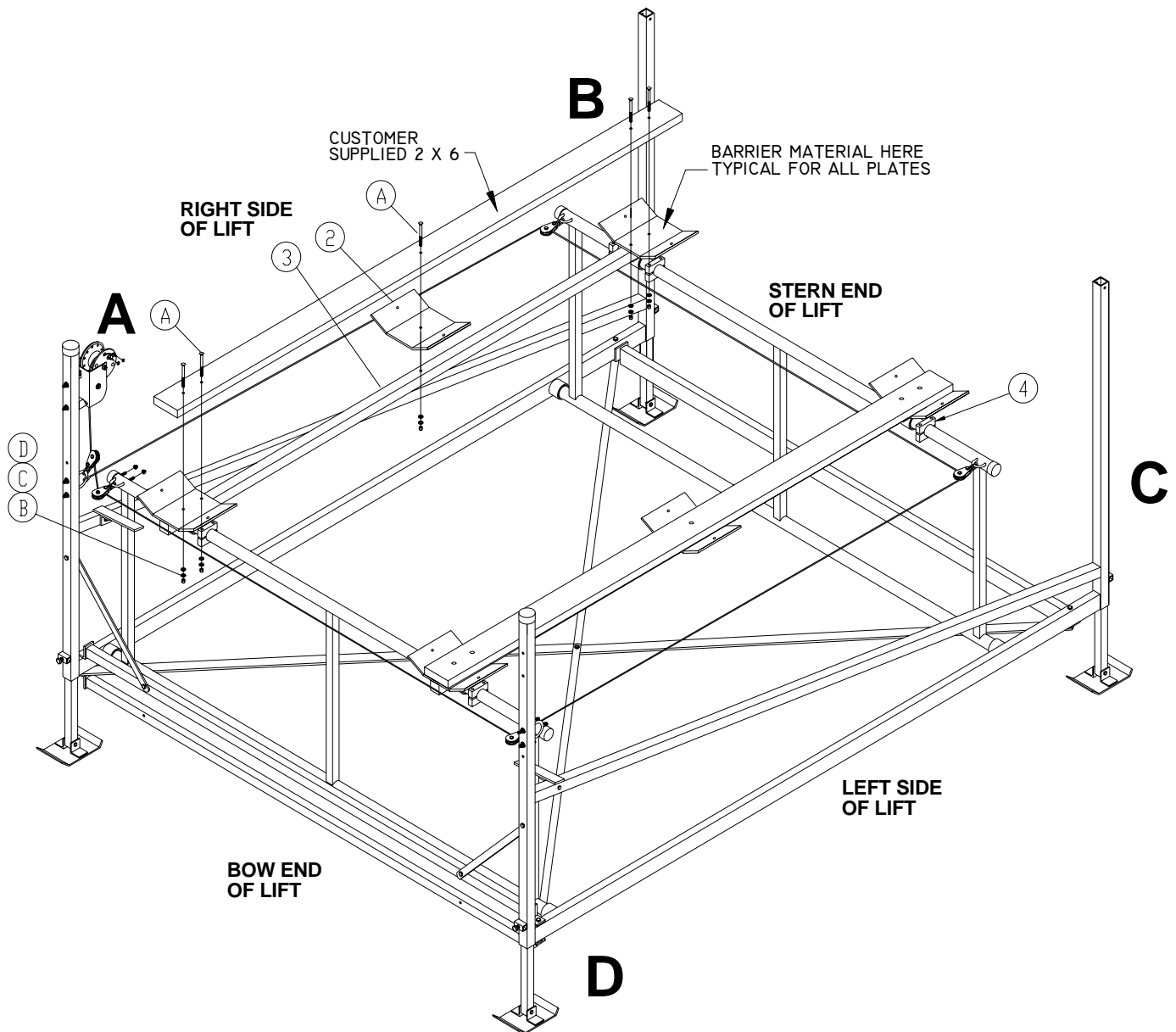


Figure 2-2.

Lifting Arm Pontoon Bunk Mounting Plate Assembly

2.5 PONTOON BUNK SIDE ASSEMBLY

1. Refer to Figure 2-3, Detail L & M. Place the four 2" x 4" pressure treated wood pieces (one each side of each 2" x 6") on the pontoon bunk mounting plates along with scrap barrier material (to ensure proper wood positioning). Transfer all hole locations to the 2" x 4" s. Ensure that the ends of the wood are even with one another, cut 2" x 4" if needed.
2. Once again drill holes using the 7/16" drill bit, and optional 1" flat wood bit to do the optional countersink of 1/4" deep.
3. Place a barrier material between pressure treated wood and aluminum mounting plates as noted in Section 2.2 above.
 - If you choose to cover the wood entirely with carpeting, fold a few inches under the 2" x 4" wood with the seam kept on the bottom of wood. Attach carpet to wood with staples.
4. Attach the 2" x 4" wood onto the pontoon mounting plates using: carriage bolt (E), flat washer (B), split-lock washer (C), and hex nut (D).

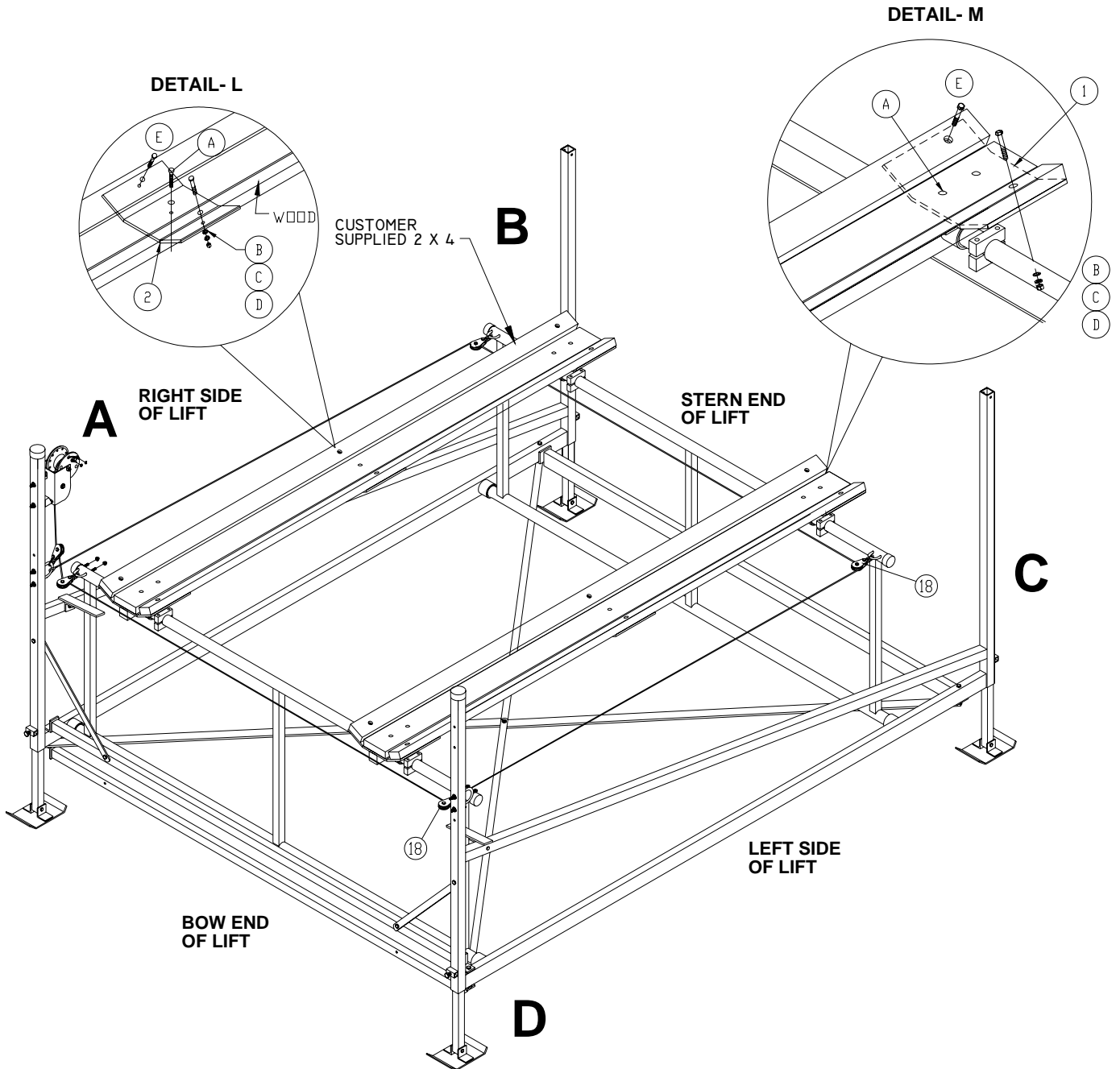


Figure 2-3.
Pontoon Bunk Side Assembly

3 PARTS LISTS

Each reference number in the following parts lists can be matched with the reference number or letter referred to in the illustrations of the instruction manual.



WARNING:

FAILURE TO APPLY A SUITABLE LUBRICANT TO THE MATING SURFACES OF STAINLESS STEEL THREADED FASTENERS MAY CAUSE GALLING AND/OR SEIZING OF ASSEMBLY.

3.1 PL2000 PONTOON BUNK KIT

Reference	Part Number	Quantity	Description
	3402140	4	PONTOON BUNK SUPPORT 4-HOLE MOUNTING PLATE
2	3603390	2	PONTOON BUNK SUPPORT 3-HOLE SUPPORT PLATE
3	3406120	2	PONTOON BUNK SUPPORT TUBE
4	3403753	8PR	BUNK COLLAR
A	5893801	10	3/8 X 4-1/2 CARRIAGE BOLT
B	5896406	22	3/8 SAE FLAT WASHER
C	5806243	22	3/8 SPLIT-LOCK WASHER
D	5896377	22	3/8 HEX NUT
E	5896323	12	3/8 x 2-1/2 CARRIAGE BOLT
F	5896956	16	1/4 x 2-3/4 HEX HEAD CAP SCREW
G	5896392	16	1/4 USS FLAT WASHER
H	5896373	16	1/4 HEX NUT

3.2 PL1200 PONTOON BUNK KIT

Reference	Part Number	Quantity	Description
1	3402140	4	PONTOON BUNK SUPPORT 4-HOLE MOUNTING PLATE
3	3402135	2	PONTOON BUNK SUPPORT TUBE
4	3403753	8PR	BUNK COLLAR
A	5893801	8	3/8 X 4-1/2 CARRIAGE BOLT
B	5896406	16	3/8 SAE FLAT WASHER
C	5806243	16	3/8 SPLIT-LOCK WASHER
D	5896377	16	3/8 HEX NUT
E	5896323	8	3/8 x 2-1/2 CARRIAGE BOLT
F	5896956	16	1/4 x 2-3/4 HEX HEAD CAP SCREW
G	5896392	16	1/4 USS FLAT WASHER
H	5896373	16	1/4 HEX NUT

3.3 PL1200W PONTOON BUNK KIT

Reference	Part Number	Quantity	Description
1	3402140	4	PONTOON BUNK SUPPORT 4-HOLE MOUNTING PLATE
2	3603390	4	PONTOON BUNK SUPPORT 3-HOLE SUPPORT PLATE
3	3402137	2	PONTOON BUNK SUPPORT TUBE
4	3403753	8PR	BUNK COLLAR
A	5893801	12	3/8 X 4-1/2 CARRIAGE BOLT
B	5896406	28	3/8 SAE FLAT WASHER
C	5806243	28	3/8 SPLIT-LOCK WASHER
D	5896377	28	3/8 HEX NUT
E	5896323	16	3/8 x 2-1/2 CARRIAGE BOLT
F	5896956	16	1/4 x 2-3/4 HEX HEAD CAP SCREW
G	5896392	16	1/4 USS FLAT WASHER
H	5896373	16	1/4 HEX NUT

RECOMMENDED WOOD (NOT INCLUDED)

PL1200

- 2 PCS 2" x 6" x 78" PRESSURE TREATED WOOD
- 4 PCS 2" x 4" x 78" PRESSURE TREATED WOOD

PL1200W

- 2 PCS 2" x 6" x 109" PRESSURE TREATED WOOD
- 4 PCS 2" x 4" x 109" PRESSURE TREATED WOOD

PL2000

- 2 PCS 2" x 6" x 120" PRESSURE TREATED WOOD
- 4 PCS 2" x 4" x 120" PRESSURE TREATED WOOD

TWO YEAR LIMITED WARRANTY

Reimann & Georger Corporation Marine Products

This product is warranted by RGC® Marine Products to the original purchaser to be free from defects in material and workmanship under normal use for a period of two years from the date of purchase.

During the warranty period, and upon proof of purchase, the product will be repaired or replaced (with the same or similar model) at our option, without charge for either parts or labor when serviced at RGC® Marine Products.

Upon completion of repair, the unit will be returned to the customer freight prepaid. The warranty will not apply to this product if it has been misused, abused, or altered.

NEITHER THIS WARRANTY OR ANY OTHER WARRANTY, EXPRESS OR IMPLIED, INCLUDING IMPLIED WARRANTIES OF MERCHANTABILITY, SHALL EXTEND BEYOND THE WARRANTY PERIOD. NO RESPONSIBILITY IS ASSUMED FOR ANY INCIDENTAL OR CONSEQUENTIAL DAMAGES. SOME STATES DO NOT ALLOW EXCLUSION OR LIMITATION OF INCIDENTAL OR CONSEQUENTIAL DAMAGES, SO THE ABOVE LIMITATIONS OR EXCLUSIONS MAY NOT APPLY TO YOU.

This warranty gives you specific legal rights, and you may also have other rights which vary from state to state.