

HL SHELF SUPPORT INSTRUCTIONS

P/N 4110075 HL SHELF WITH SUPPORT PACKAGE			
Reference	Part Number	Quantity	Description
1	4100525	1	HL CANOPY SUPPORT POST (A)
2	4100526	1	HL CANOPY SUPPORT POST (B)
3	4100530	1	HL 5K-7K CANOPY SUPPORT HORIZONTAL
	4100970	1	HL SHELF SUPPORT BAG OF BOLTS
	4100585	1	HL CONTROL BOX SHELF

P/N 4110080 HL XL SHELF WITH SUPPORT PACKAGE			
Reference	Part Number	Quantity	Description
1	4100525	1	HL CANOPY SUPPORT POST (A)
2	4100526	1	HL CANOPY SUPPORT POST (B)
3	4101530	1	HL XL CANOPY SUPPORT HORIZONTAL
	4100970	1	HL SHELF SUPPORT BAG OF BOLTS
	4100585	1	HL CONTROL BOX SHELF

P/N 4100970 HL SHELF SUPPORT BAG OF BOLTS			
Reference	Part Number	Quantity	Description
A	5896248	8	3/8-16 x 1-1/4 HEX HEAD CAP SCREW
B	5896255	4	3/8-16 x 3 HEX HEAD CAP SCREW
D	5896406	8	3/8-16 FLAT SAE WASHER
E	5897016	12	3/8-16 NYLOCK HEX NUT

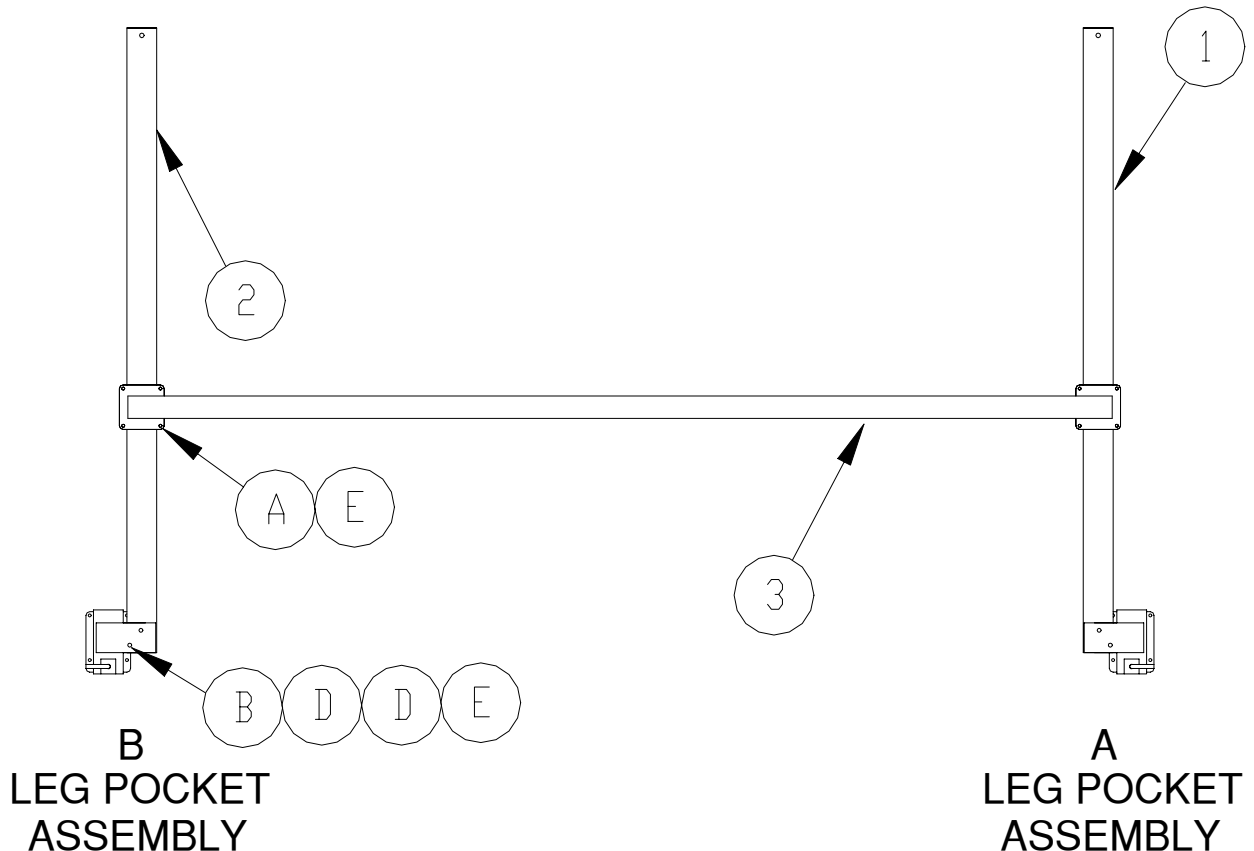


Figure 1

1. Read the following instructions thoroughly before starting work. If you don't understand a procedure, call Reimann & Georger Corporation or its distributors for assistance
2. Insure that you have all the parts listed. If any parts are missing or damaged, return to place of purchase immediately.
3. Mount the Canopy Support Post (A) **#1** into the (A) Leg Pocket Assembly as shown in Figure 1 using bolts **B**, flat washer **D** next to bolt heads, flat washer **D** next to locknuts, and locknuts **E**. Do not tighten any hardware until all components on one side of the lift are completely assembled.
4. Mount the Canopy Support Post (B) **#2** into the (B) Leg Pocket Assembly as shown in Figure 1 using bolt **B**, flat washer **D** next to bolt heads, flat washer **D** next to locknuts, and locknuts **E**.
5. Bolt the Canopy Support Horizontal **#3** to both Canopy Support Posts **#1** and **#2** as shown in Figure 1 using bolts **A** and locknuts **E**. Tighten all hardware.