



BR1750 BEACHER RAILWAY INSTRUCTIONS

REIMANN & GEORGER CORPORATION
MARINE PRODUCTS
P/N 6112029

BUFFALO, NY
7/08/11

TABLE OF CONTENTS

CHAPTER	TITLE	PAGE
1	SAFETY	1
1.1	Introduction	1
1.2	Safety Definitions	1
1.3	Equipment Safety Labels	1
1.4	Equipment and Personnel Safety	1
1.5	Installation Safety	1
1.6	Operating Safety	2
1.6.1	General	2
1.6.2	Safety When Raising the Boat	2
1.6.3	Safety When Lowering the Boat	2
1.7	Maintenance and Storage Safety	3
2	SPECIFICATIONS	4
2.1	Technical Data	4
2.2	Nameplate and Serial Number Tag	4
2.3	Optional Equipment	4
3	INSTALLATION AND SETUP	5
3.1	Pre-Installation Checks	5
3.2	Track Assembly	5
3.3	Winch Support and Winch Mounting	7
3.4	Roller Assembly	8
3.5	Final Assembly Checklist	10
4	OPERATION	11
4.1	Before Operating the Beacher	11
4.2	Raising and Lowering the Watercraft	11
5	INSPECTION AND MAINTENANCE	12
5.1	General Maintenance Rules	12
5.2	Wire Rope Inspection Procedure	12
5.3	Annual Inspection	13
5.4	Annual Winch Maintenance	13
5.5	Storage Procedure	13
6	TROUBLESHOOTING	14
7	PARTS LISTS	15
7.1	BR1750 Railway Kit W/ 18 Feet of Track	15
7.1.1	BR1750 18 Feet Track Bundle	15
7.1.2	BR1750 18 Feet Carton of Parts	15

LIST OF FIGURES

FIGURE	DESCRIPTION	PAGE
2-1	Typical Product Nameplate	4
3-1	Track Assembly.....	6
3-2	Winch Support Assembly.....	7
3-3	Roller Assembly	8
3-4	Complete BR1750 Assembly	9
5-1	Wire Rope Components	13

1 SAFETY

1.1 INTRODUCTION

Your Reimann & Georger Corporation Marine Products Aluminum BR1750 Beacher Railway has been engineered to provide lifting performance, long term economics and safety advantages that no other type can match. However, even a well-designed and well-built lift can malfunction or become hazardous in the hands of an inexperienced and/or untrained user. Therefore, read this manual and related equipment manuals thoroughly before operating your lift to provide maximum safety for all operating personnel, and to get the maximum benefit from your equipment.



WARNING:

DO NOT OPERATE THIS BEACHER WITHOUT STUDYING THIS ENTIRE MANUAL. FAILURE TO DO THIS CAN LEAD TO EQUIPMENT MISUSE WITH RESULTING DAMAGE AND/OR SERIOUS PERSONAL INJURY. CONTACT YOUR RGC® MARINE DEALER IF YOU HAVE ANY QUESTIONS.

1.2 SAFETY DEFINITIONS

A safety message alerts you to potential hazards that could hurt you or others or cause property damage. The safety messages or signal words for product safety signs are **DANGER**, **WARNING**, and **CAUTION**. Each safety message is preceded by a safety alert symbol and is defined as follows:

DANGER: Indicates an imminently hazardous situation which, if not avoided, **will** cause death or serious injury. This safety message is limited to the most extreme situations.

WARNING: Indicates potentially hazardous situation which, if not avoided, **could** result in death or serious injury.

CAUTION: Indicates a potentially hazardous situation which, if not avoided, **may** result in minor or moderate injury. It may also be used to alert against unsafe practices and property-damage-only accidents.

1.3 EQUIPMENT SAFETY LABELS

These labels warn you of potential hazards which could cause injury. Read them carefully. If a label comes off or becomes illegible, contact a Reimann & Georger Corporation dealer for a free replacement.

1.4 EQUIPMENT AND PERSONNEL SAFETY

1. Do not use the beacher if it shows any signs of damage.
2. Do not exceed the rated maximum lifting capacity of this equipment.
3. Do not allow anyone to swim or play near or on the beacher at any time.

1.5 INSTALLATION SAFETY

1. Insure that all bolts and nuts are fastened securely prior to operation.
2. Do not weld or otherwise modify the beacher. Such alterations may weaken the structural integrity of the lift and void the warranty.

1.6 OPERATING SAFETY

1.6.1 General



WARNING:

NEVER USE THIS EQUIPMENT BEYOND ITS RATED CAPACITY OF 1750 LBS. THIS CAN DAMAGE THE BEACHER AND/OR WATERCRAFT WITH RESULTING SERIOUS PERSONAL INJURY.

1. Before allowing anyone to operate the beacher, be certain they fully understand the proper operating procedure.
2. Completely remove any user or dealer installed locking devices before operating the lift.



CAUTION:

DO NOT TRY RETRIEVING OR LAUNCHING YOUR WATERCRAFT IN ROUGH WATER CONDITIONS. THIS CAN DAMAGE YOUR WATERCRAFT AND/OR THE BEACHER.

3. Keep people and pets clear during operation of the beacher.
4. Keep fingers and clothing clear of all moving parts.
5. Check the beacher periodically for frayed straps or wire rope, and/or binding rollers.



WARNING:

WEAR HEAVY LEATHER GLOVES WHEN HANDLING WIRE ROPE. INSUFFICIENT HAND PROTECTION WHEN HANDLING WIRE ROPE CAN CAUSE SERIOUS PERSONAL INJURY.

6. Do not attempt to make any adjustments on the beacher while it is being operated.
7. Contact your dealer if the winch mechanism fails to perform as described in the Operation chapter of this manual.



CAUTION:

NEVER TAMPER WITH THE WINCH MECHANISM. THIS CAN CAUSE EQUIPMENT DAMAGE THAT WILL INVALIDATE YOUR WARRANTY.

8. Do not operate the beacher under the influence of drugs, alcohol, or medication.

1.6.2 Safety When Raising the Watercraft

The brake pawl must click, indicating that the brake is operative. This will give you controlled motion of your watercraft up the beacher. Insure that your watercraft is centered on the beacher, and the winch strap or wire rope is securely attached to your watercraft.

1.6.3 Safety When Lowering the Watercraft

1. Maintain a firm grip on the winch handle. Release the winch pawl, and slowly crank the winch handle to pay out the winch strap or cable. Do not allow the strap or cable to slacken, this will cause uncontrolled lowering of your watercraft.



WARNING:

EXERCISE CAUTION WHEN LAUNCHING YOUR WATERCRAFT. NEVER TRY TO STOP A FREEWHEELING WINCH, AS PERSONAL INJURY CAN OCCUR.

1.7 MAINTENANCE AND STORAGE SAFETY

1. At least once a year, the lift must be thoroughly inspected as described in the Maintenance chapter of this manual.



WARNING:

THE WINCH MAINTENANCE SCHEDULE MUST BE FOLLOWED TO AVOID POSSIBLE EQUIPMENT FAILURE OR PERSONAL INJURY. SEE THE SUPPLIED WINCH BROCHURE FOR MAINTENANCE INFORMATION.

2. Immediately replace any components found to be defective.

2 SPECIFICATIONS

2.1 TECHNICAL DATA

Capacity	1750 lbs.
Standard Length	18'
Extension Section Length	9'
Maximum Length	27'
Minimum Roller Width (Outside to Outside)	48"
Maximum Roller Width (Outside to Outside)	60"
Shipping Weight	170 Lbs.

2.2 NAMEPLATE AND SERIAL NUMBER TAG

It is important to identify your lift completely and accurately whenever ordering spare parts or requesting assistance in service. The lift has a product nameplate located on the vertical leg. The label shows the model and serial numbers and capacity rating. The lift label should appear as the sample nameplate shown in Figure 2-1. Record the model and serial numbers, and capacity rating for future reference.

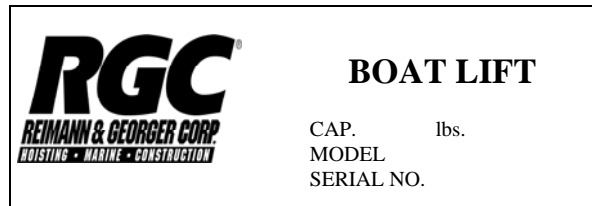


Figure 2-1.
Typical Lift Product Nameplate

MODEL _____ **BR1750** _____

SERIAL NUMBER _____

CAPACITY RATING _____ **1750 LBS.** _____

2.3 OPTIONAL EQUIPMENT

The following options are available which enable you to customize your lift for your particular operation. Installation instructions are provided as part of each option kit.

1. 9FT Extension Section available.
2. 41FT Wire Rope
3. Replacement Rollers
4. Bow Stop
5. Track Supports – two sizes
6. 30" Diameter Handwheel

3 INSTALLATION AND SETUP

3.1 PRE-INSTALLATION CHECKS

1. Do not assemble the beacher railway if any part shows any sign of damage.
2. Do not weld or otherwise modify the beacher railway. Such alterations may weaken the structural integrity of the beacher railway and void the warranty.
3. This product has been supplied with stainless steel hardware to protect against a harsh marine environment and provide outstanding performance. Due to the chemistry and surface condition of stainless steel, there is a natural tendency for the hardware to “gall, lock up, or seize” during assembly. To prevent this from occurring, it is **highly recommended** that the anti-seize supplied in the hardware bag be applied to the mating surfaces of all stainless steel fasteners before assembly. Lubricants containing molybdenum disulfide, graphite, mica or talc may also be used.
4. Where it is specified to use a flat washer, split-lock washer and hex nut on bolted connections, make sure that they are assembled onto the bolt in the stated order to insure proper clamping forces between assembled components.



CAUTION:

DO NOT EXCEED THE MAXIMUM TORQUE RATING ON ALL BOLTS OF 20 FT-LBS.



WARNING:

FAILURE TO APPLY A SUITABLE LUBRICANT TO THE MATING SURFACES OF STAINLESS STEEL THREADED FASTENERS MAY CAUSE GALLING AND/OR SEIZING OF ASSEMBLY.

3.2 TRACK ASSEMBLY

1. Refer to **Figure 3-1**. Assemble right hand track sections using splice plate (7) and hardware (J & E) to attach track sections (5 & 3) together. Be sure to have the individual track sections placed correctly, the water end being with the rollers closest to the end of the track as shown.
2. Slide track anchor assembly (12) over winch post (1) as shown.
3. Install winch post (1) and winch support strut (6) together over the rail cross supports on the right hand end section (5).
4. Assemble left-hand track sections (4 & 2) by sliding each section into the matching left section cross-ties. Then repeat step one to complete.
5. Install square nut (H) and loosely thread hex head cap screw (F) into the right side track section cross-ties (8 places) as shown in **Detail B**.
6. Set track section spacing as required by watercraft and tighten hex head cap screw (F) to secure the track spacing.
7. The winch support (1) must remain centered on track when hex head cap screws (F) are tightened.

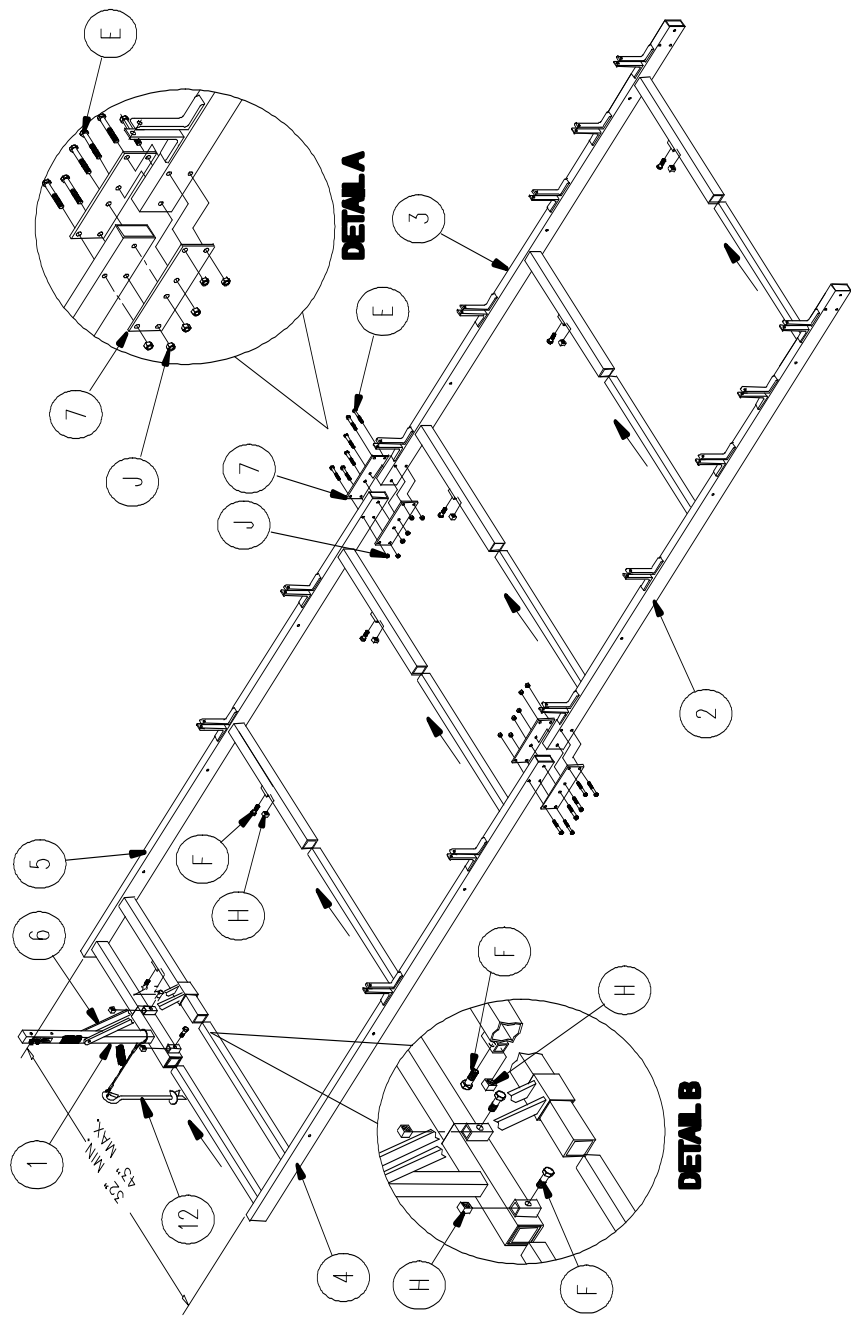


Figure 3-1.
Track Assembly

3.3 WINCH SUPPORT AND WINCH MOUNTING

1. Refer to **Figure 3-2**. Attach the winch support strut (6) to winch post (1) using hardware (E & J).
2. Assemble winch (10) to winch post using two each (D & J).
3. Install winch strap (11) to winch using hex head cap screw (C) through one side of drum, then through loop of strap, and other side of drum. Secure with lock washer (B) and nut (6).

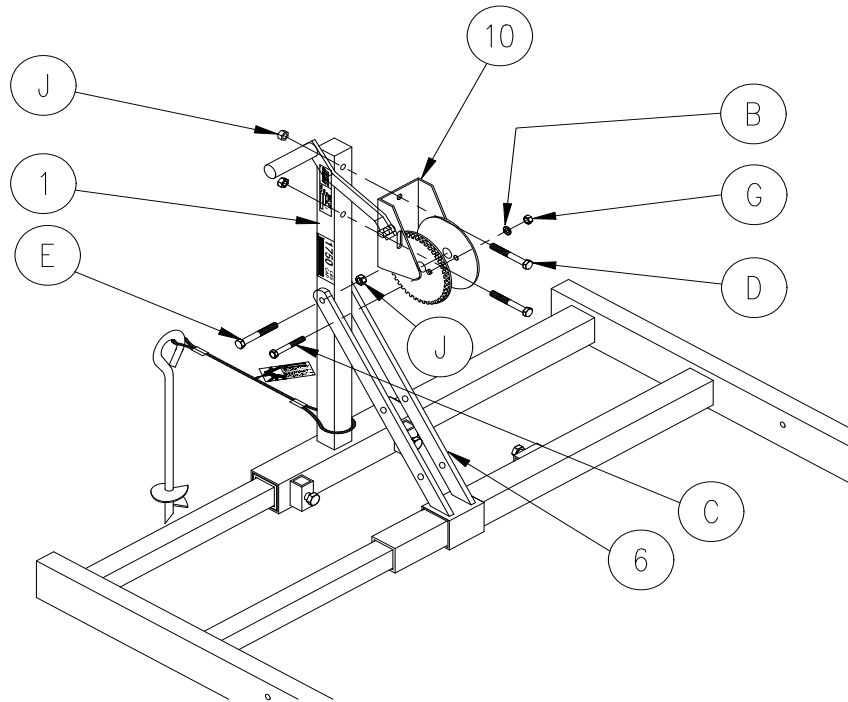


Figure 3-2.
Winch Support Assembly

3.4 ROLLER ASSEMBLY

1. Refer to **Figure 3-3**. Install wobble roller axle (8) to track using hex head cap screw (D) and nut (J) as shown in **Detail C**. Insure that you do not over tighten the wheel pivot bolt.
2. Install two washers (I) and 5" guide-on roller (9) onto each side of axle. Use cotter pin (A) to secure both sides as shown in **Detail C**.

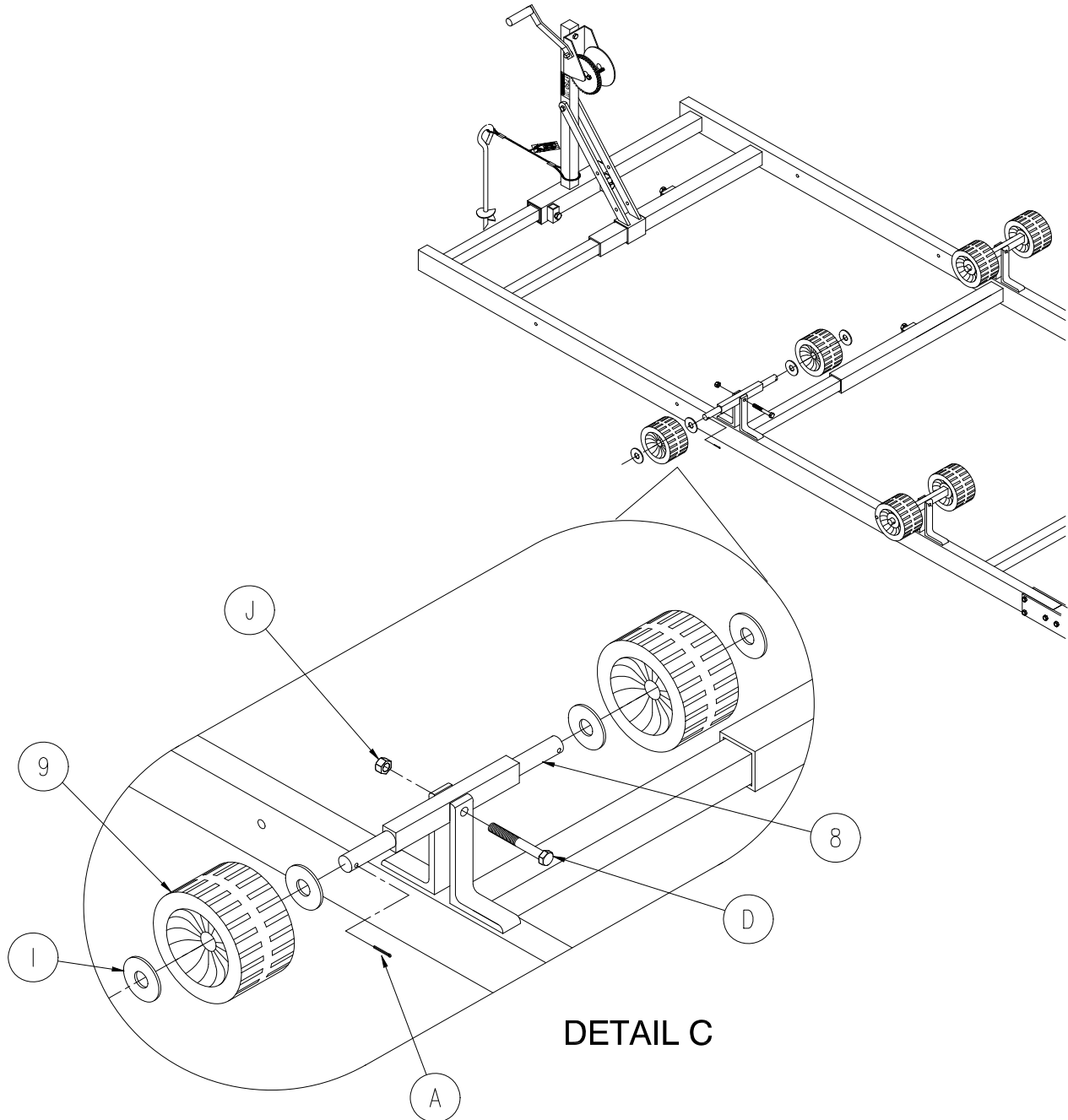


Figure 3-3.
Roller Assembly

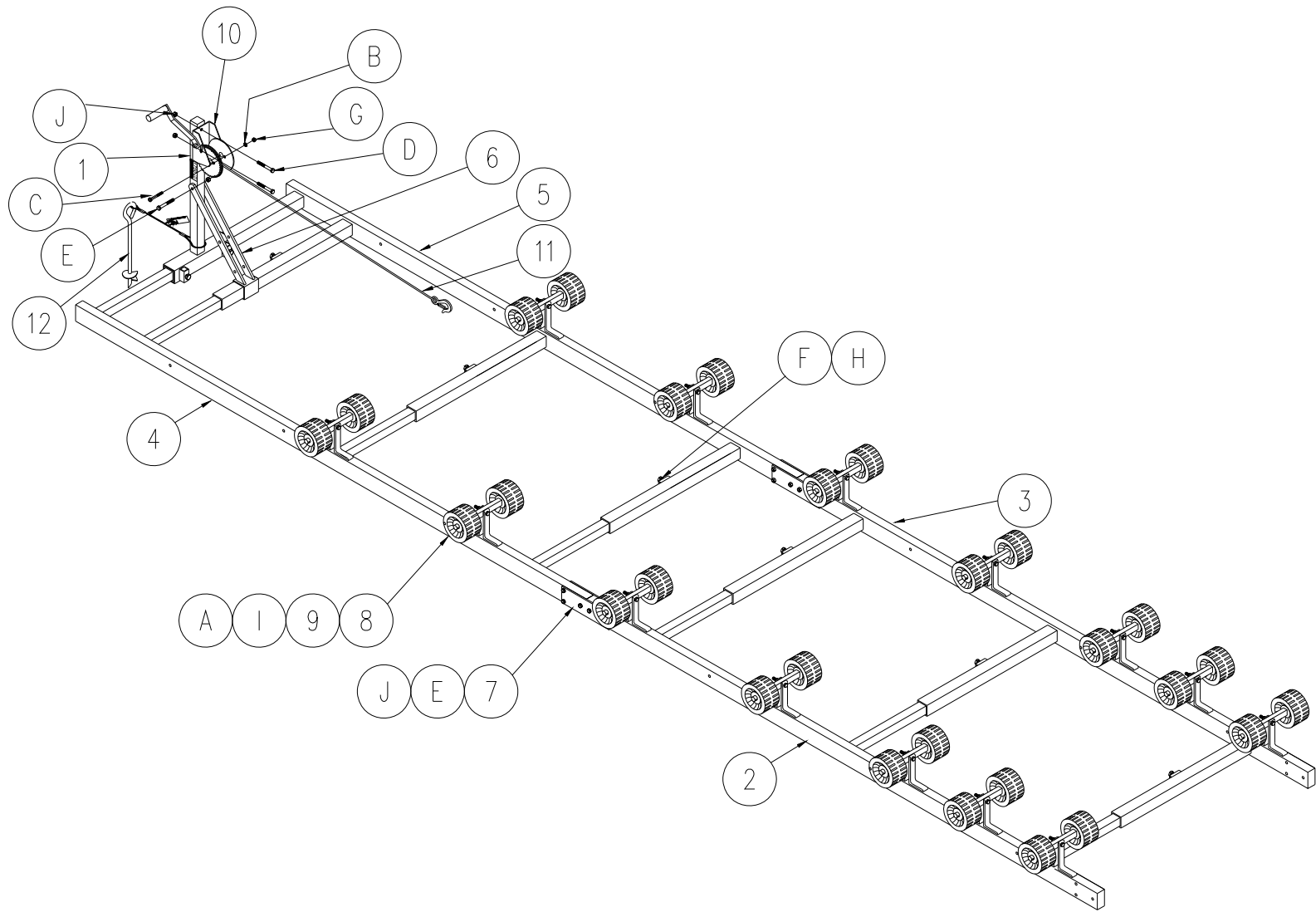


Figure 3-4.
BR1750 Complete Assembly

3.5 FINAL ASSEMBLY CHECKLIST

The beacher railway and related equipment must be thoroughly inspected prior to each use. Only those who have read and understood this entire manual and related equipment manuals are qualified to do this inspection. This checklist is to be used as a guideline in conjunction with the maintenance and inspection procedures outlined in Chapter 5. It is recommended that the inspection be maintained as a permanent record.

- Insure all structural members of the railway are free of defects and damage that may affect the integrity.
- Insure the wobble roller wheels spin freely. If any wheel binds, replace it immediately.
- Insure all bolts are fastened securely prior to operation.
- Insure the track is supported approximately every 3 feet by either the ground or Reimann & Georger Corporation track supports
- Insure the track supports are vertically plumb.
- Insure the railway installation will clear all obstructions.
- Before operation, insure the boat is secured to the winch.
- Insure the bow track anchor assembly is secured solidly in the ground for steep uphill slopes.
- Insure the railway is not being used beyond its rated capacity.
- Insure that any user or dealer installed locking devices have been removed before operating the railway.
- Conduct the wire rope inspection procedure described in Chapter 5 at least once per month.

4 OPERATION

4.1 BEFORE OPERATING THE BEACHER

1. Read and know the instructions and insure that everyone understands the proper operating procedure.
2. Do not use the beacher if it shows any signs of damage.
3. Insure that all bolts and nuts are fastened securely prior to operation.
4. Never try lifting anything other than a watercraft with this beacher.



WARNING:

NEVER TRY TO USE THIS EQUIPMENT BEYOND ITS RATED CAPACITY. THIS CAN DAMAGE THE LIFT AND/OR WATERCRAFT RESULTING IN PERSONAL INJURY.

THE WATERCRAFT MUST BE PROPERLY SECURED ON THE LIFT BEFORE DOING ANY RAISING OR LOWERING. FAILURE TO DO THIS CAN CAUSE EQUIPMENT DAMAGE AND/OR PERSONAL INJURY.



CAUTION:

NEVER TRY TO LIFT OR LAUNCH YOUR WATERCRAFT IN ROUGH WATER CONDITIONS. THIS CAN DAMAGE YOUR WATERCRAFT AND/OR THE BEACHER.

6. Do not operate the lift under the influence of drugs, alcohol, or medication.
7. Completely remove any user or dealer installed locking devices.



CAUTION:

NEVER TAMPER WITH THE WINCH MECHANISM. THIS CAN CAUSE EQUIPMENT DAMAGE THAT WILL INVALIDATE YOUR WARRANTY.

4.2 RAISING AND LOWERING THE WATERCRAFT

1. Approach the water end of the beacher with your watercraft. Pay out a sufficient amount of the winch strap or wire rope to attach the hook to the front of the watercraft. Guide the watercraft onto the beacher, insuring that it is centered. Engage the winch pawl and rotate the winch handle to pull the watercraft up onto the rollers. Continue this until the watercraft is secured.
2. To lower the watercraft into the water, grab the winch handle securely and release the winch pawl. Pay out the winch strap or wire rope slowly, insuring that the strap or wire rope remains taut. When the watercraft is sufficiently down the beacher to float remove the strap or wire rope hook from the watercraft and reel it back onto the winch. If the strap or wire rope is allowed to become slack, the craft may move down the beacher in an uncontrolled fashion. DO NOT attempt to stop a winch handle that is freewheeling. Serious injury may result.
3. Keep fingers and clothing clear of all moving part. Keep people clear during operation of the beacher.
4. Never allow people on the watercraft any time it is suspended above the water on the lift.



WARNING:

DO NOT STAND OR WALK ON THE BEACHER TRACK. THIS CAN CAUSE SERIOUS PERSONAL INJURY.

5. Check the lift periodically for frayed straps, wire ropes and/or binding wheels.

5 INSPECTION AND MAINTENANCE

5.1 GENERAL MAINTENANCE RULES



WARNING:

NEVER PERFORM WORK IN OR ON THE WATERCRAFT WHEN IT IS SUSPENDED ABOVE THE WATER ON THE BEACHER.



CAUTION:

POOR OR IMPROPER MAINTENANCE CAN LEAD TO EQUIPMENT DAMAGE OR FAILURE.

1. Do not weld or otherwise modify the lift. Such alterations may weaken the structural integrity of the lift and invalidate your warranty.
2. Completely remove the watercraft before performing any type of maintenance or repair on the beacher.

5.2 WIRE ROPE INSPECTION PROCEDURE

Inspect the wire rope at least once per month for signs of wear, damage, or pinching. Inspect the entire wire rope working length. Thoroughly inspect the rope sections that pass over pulleys or drums, or that make opposing turns. Inspect wire rope and end attachments carefully. While inspecting, examine pulleys, guards, guides, drums, flanges, and other surfaces contacting wire rope during operation. Correct any condition harming the rope in use or other damage or worn surfaces at this time.



WARNING:

WEAR HEAVY LEATHER GLOVES WHEN HANDLING WIRE ROPE. INSUFFICIENT HAND PROTECTION WHEN HANDLING WIRE ROPE CAN CAUSE SERIOUS PERSONAL INJURY.

Remove and immediately replace wire rope with one or more of the following defects:

1. Corrosion
2. Broken wires: (See Figure 5-1.)
 - (a) One or more valley breaks. A valley break is a wire break occurring in the valley between two adjacent strands.
 - (b) Six randomly distributed broken wires in one rope lay. A rope lay is the length of rope along which one strand makes a complete revolution around the rope. Keeping the rope clean and wound evenly on the winch drum will increase its life and efficiency.
3. Abrasion: Scrubbing, flattening or peening causing loss of more than one-third of the original diameter of the outside wires.
4. Kinking: Severe kinking, crushing, bird caging or other damage causing distortion of the rope structure. Bird caging is a bulging in the wire rope caused by the individual wires becoming untwisted. This untwisting of individual wires is usually caused by impact loading on the wire rope.
5. Heat damage: Evidence of any heat damage caused by a torch or by contact with electrical wires.
6. Reduction of more than 3/64 inch from 1/4 inch diameter wire rope, 1/16 inch from 5/16 or 3/8 inch diameter wire rope. Marked reduction in diameter indicates core deterioration.

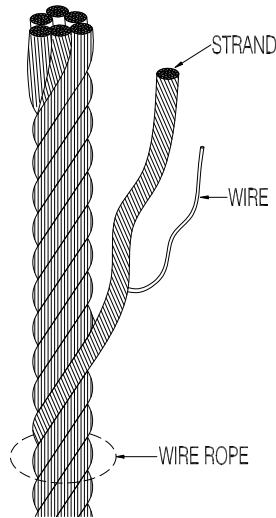


Figure 5-1.
Wire Rope Components

5.3 ANNUAL INSPECTION

At least once a year, the beacher must be thoroughly inspected using the following procedure.



WARNING:

DO NOT ALLOW ANYBODY TO USE THE BEACHER UNTIL THIS MAINTENANCE IS COMPLETED.

1. Tighten all bolts.
2. Check the rollers to insure that they spin freely. If they bind, replace them immediately.
3. Check frame thoroughly for defects.
4. Perform the winch maintenance as described in Section 5.4.

5.4 ANNUAL WINCH MAINTENANCE



WARNING:

THE WINCH MAINTENANCE SCHEDULE MUST BE FOLLOWED TO AVOID POSSIBLE EQUIPMENT FAILURE OR PERSONAL INJURY.

1. Apply automotive type grease to both the pinion and drum gear teeth, and to the outside diameter of the drum bearing. Always keep this light film of grease on the gear teeth.
2. During each usage, check for proper ratchet operation. The ratchet must emit an audible click as it passes over the gear teeth. This shows that the pawl is engaged and working properly.

5.5 STORAGE PROCEDURE

1. Protect your beacher as far as possible from damage caused by environmental factors such as airborne fallout, chemicals, tree sap, and weather hazards.
2. Do not allow anyone to swim or play near the beacher at any time.
3. Secure the beacher and your watercraft when unattended. Never assume you will find the beacher in the same condition that you left it.

6 TROUBLESHOOTING

The following chart is intended to assist with troubleshooting your BR1750 beacher. While not all inclusive, the chart outlines the most common causes of a problem and the recommended course of action.

SYMPTOM	CAUSE AND CORRECTIVE ACTION
Winch fails to hold the watercraft in a given position.	The winch pawl is not engaged or damaged.
Winch is operating properly, but raising the watercraft is either difficult or impossible.	<p>Excessive slope, or weight of watercraft. Check weight and slope of the beacher.</p> <p>Rollers are not rolling freely. Free up or replace the rollers. Watercraft off center or moving up the beacher on an angle relative to the beacher. Reposition the watercraft on the beacher.</p>
Watercraft shifts position when operating the beacher.	Watercraft is not properly positioned on the beacher—failure to properly position watercraft can cause equipment damage and/or serious personal injury.
Lowering operation triggers a “freewheeling” of the handwheel.	Excessive slack in the winch strap or wire rope. Excessive slope of beacher. Insure there is no slack in the strap or wire rope, check the slope of the beacher.

7 PARTS LISTS

Each reference number in the following parts lists can be matched with the reference number referred to in both the text and illustrations of Chapter 3, Installation and Setup.



WARNING:

FAILURE TO APPLY A SUITABLE LUBRICANT TO THE MATING SURFACES OF STAINLESS STEEL THREADED FASTENERS MAY CAUSE GALLING AND/OR SEIZING OF ASSEMBLY.

7.1 #3501750 BR1750 RAILWAY KIT WITH 18 FEET OF TRACK

REF #	PART #	QTY	DESCRIPTION
	3501610	1	BR1750 18 FEET TRACK BUNDLE (see section 7.1.1)
	3501620	1	BR1750 18 FEET CARTON OF PARTS (see section 7.1.2)

7.1.1 #3501610 BR1750 18 FEET TRACK BUNDLE

REF #	PART #	QTY	DESCRIPTION
1	3501800	1	BR1750 WINCH POST
2	3501815	1	BR1750 TRACK MIDDLE SECTION LEFT HAND
3	3501820	1	BR1750 TRACK MIDDLE SECTION RIGHT HAND
4	3501825	1	BR1750 TRACK END SECTION LEFT HAND
5	3501830	1	BR1750 TRACK END SECTION RIGHT HAND

7.1.2 #3501620 BR1750 18 FT CARTON OF PARTS

REF #	PART #	QTY	DESCRIPTION
6	3501805	1	BR1750 WINCH SUPPORT STRUT
7	3501900	4	BR1750 TRACK SPLICE PLATE
8	3501905	14	BR1750 WOBBLE ROLLER AXLE
9	7636290	28	WOBBLE ROLLER 5"
10	7703648	1	WINCH K1051
11	3501775	1	BR1750 41' CABLE ASSY SS
12	3501770	1	BR1750 TRACK ANCHOR ASSEMBLY
	3501630	1	BR1750 BAG OF BOLTS consisting of:
A	5893501	28	1/8 X 1 COTTER PIN
B	5894004	1	5/16 SPLIT LOCK WASHER
C	5896230	1	5/16-18 X 2-1/2 HEX HEAD CAP SCREW
D	5896253	16	3/8-16 X 2-1/2 HEX HEAD CAP SCREW
E	5896268	13	3/8-16 X 2-3/4 HEX HEAD CAP SCREW
F	5896283	8	1/2-13 X 1-3/4 HEX HEAD CAP SCREW
G	5896375	1	5/16-18 HEX NUT
H	5896385	8	1/2-13 SQUARE HEAD NUT
I	5896417	56	3/4" SAE FLAT WASHER
J	5897016	29	3/8-16 NYLOCK HEX NUT

LIMITED WARRANTY

Reimann & Georger Corporation MARINE PRODUCTS

R & G Marine products, hereafter referred to as the “Manufacturer”, extends this limited warranty to the original purchaser of this product. The original purchaser, hereinafter referred to as the “Buyer”, is defined as the first legal owner of this product other than an authorized distributor or dealer who has bought the product from the Manufacturer for resale to the public. **The Buyer must complete and return the Warranty Registration section of the provided Warranty Card to make this limited warranty effective.**

CONSUMER PRODUCT PROVISIONS

I. ARTICLE I—CONSUMER PRODUCT PROVISIONS: THE FOLLOWING PROVISIONS SHALL BE APPLICABLE IF THIS PRODUCT IS BEING PURCHASED FOR PERSONAL, FAMILY OR HOUSEHOLD PURPOSES.

THE CONSUMER PRODUCT PROVISIONS CONTAINED IN THIS ARTICLE I SHALL APPLY UNLESS THIS PRODUCT IS BEING PURCHASED SOLELY FOR COMMERCIAL OR INDUSTRIAL USE, IN WHICH EVENT THE PROVISIONS CONTAINED IN ARTICLE II BELOW SHALL APPLY AND THE PROVISIONS CONTAINED IN THIS ARTICLE I SHALL BE INAPPLICABLE.

A. 2-YEAR LIMITED WARRANTY

The Manufacturer warrants to the Buyer that all supplied parts shall be free of defects in material and workmanship for a period of two (2) years from date of original purchase. This limited warranty covers the cost of all parts and labor needed to repair any item that is found to be defective in material and workmanship. Items covered include cables, sheaves, chains, motors, reducers, switches, control panels and ground fault circuit interrupters.

B. 15-YEAR LIMITED WARRANTY ON VL/PL SERIES ALUMINUM FRAME EXTRUSION

The Manufacturer warrants to the Buyer that the frame and extrusions shall be free of defects in material and workmanship for a period of fifteen (15) years from date of original purchase. This limited warranty covers the cost of all parts and labor needed to repair any item that is found to be defective in material and workmanship.

C. MANUFACTURER’S OBLIGATIONS

The Manufacturer’s sole obligation under either of these limited warranties is the replacement or repair, at the Manufacturer’s discretion, of parts found to be defective.

D. NO SPECIAL, INCIDENTAL OR CONSEQUENTIAL DAMAGES

IN NO EVENT SHALL THE MANUFACTURER BE LIABLE TO THE BUYER OR ANY PERSON FOR ANY INDIRECT, SPECIAL, INCIDENTAL, OR CONSEQUENTIAL LOSSES OR DAMAGES CONNECTED WITH THE USE OF THE PRODUCT UNDER WARRANTY. SUCH DAMAGES FOR WHICH THE MANUFACTURER SHALL NOT BE RESPONSIBLE INCLUDE, BUT ARE NOT LIMITED TO, LOST TIME AND CONVENIENCE, LOSS OF USE OF THE PRODUCT, THE COST OF A PRODUCT RENTAL, COSTS OF GASOLINE, TELEPHONE, TRAVEL, OR LODGING, THE LOSS OF PERSONAL OR COMMERCIAL PROPERTY, AND THE LOSS OF REVENUE.

Some States do not allow the exclusion or limitation of incidental or consequential damages, so the above limitation or exclusion may not apply to you.

E. NO LIABILITY IN EXCESS OF PURCHASE PRICE

IN NO EVENT SHALL THE MANUFACTURER’S OBLIGATIONS UNDER THIS LIMITED WARRANTY EXCEED THE PURCHASE PRICE OF THE PRODUCT.

F. NO EXTENSION OF STATUTE OF LIMITATIONS

ANY REPAIRS PERFORMED UNDER EITHER OF THESE WARRANTIES SHALL NOT IN ANY WAY EXTEND THE TWO-YEAR AND FIFTEEN-YEAR STATUTES OF LIMITATIONS CONTAINED IN THIS LIMITED WARRANTY.

G. PROCEDURE FOR WARRANTY PERFORMANCE

If the product fails to perform to the Manufacturer's specifications, the Buyer must contact the dealer from whom the product was purchased. The Buyer must provide the dealer with the applicable model and serial numbers, the date of purchase, and the nature of the problem.

H. PREAPPROVAL OF LABOR COSTS

All labor costs related to a dealer's performance of the warranty obligations under this limited warranty must be pre-approved by Reimann & Georger Corporation

I. NO OTHER EXPRESS WARRANTIES

THE MANUFACTURER IS NOT SUBJECT TO ANY EXPRESS WARRANTIES OTHER THAN THOSE SET FORTH ABOVE.

J. LIMIT ON DURATION OF IMPLIED WARRANTIES

THE DURATION OF ANY IMPLIED WARRANTIES UNDER APPLICABLE STATE LAW RELATING TO THE PURCHASE OF THIS PRODUCT SHALL BE LIMITED TO A PERIOD OF TWO (2) YEARS FROM THE DATE OF PURCHASE.

Some States do not allow limitations on how long an implied warranty lasts, so the above limitations may not apply to you.

K. QUESTIONS REGARDING LIMITED WARRANTY

Any questions regarding this limited warranty or the procedure which the consumer should follow in order to obtain performance of any warranty obligation may be addressed to either the dealer from whom this product is purchased or to Reimann & Georger Corporation, R & G Marine Products, RGC Construction Equipment, P.O. Box 681, Buffalo, NY 14240.

L. EXCLUSIONS FROM LIMITED WARRANTY. THIS LIMITED WARRANTY DOES NOT COVER ANY OF THE FOLLOWING:

1. Equipment which has been abused, damaged, used beyond rated capacity, or which is damaged or has defects caused by repairs or service completed by persons other than authorized service personnel.
2. Costs of repairing damage caused by environmental factors which include, but are not limited to, airborne fallout, chemicals, tree sap, salt, ocean spray, and water hazards.
3. Damage caused by acts of God which include, but are not limited to, hailstorms, windstorms, tornadoes, sandstorms, lightning, floods, and earthquakes.
4. Damage under conditions caused by fire or accident, by abuse or negligence, by improper installation, by misuse, by incorrect operation, by "normal wear and tear", by improper adjustment or alteration, by alterations not done by the Manufacturer, or by failure of product parts from such alterations.
5. Costs of repairing damage caused by poor or improper maintenance, costs of normally scheduled maintenance, or the cost of replacing any parts unless done as the result of a repair covered by your two-year limited warranty.

6. Costs of modifying the product in any way once delivered to the Buyer, even if such modifications were added as a production change on other products made after the Buyer's product was built.

M. RIGHT TO MODIFY PRODUCT

The Manufacturer has the right to modify this product at any time without incurring any obligation to make the same or similar modifications on products previously purchased.

N. NO AUTHORITY TO ALTER WARRANTY

No agent, representative, distributor or dealer has any authority to alter the terms of this warranty in any way.

O. SPECIFIC LEGAL RIGHTS

This warranty gives you specific legal rights and you may also have other rights which vary from State to State.

COMMERCIAL PRODUCT PROVISIONS

II. ARTICLE II—COMMERCIAL PRODUCT PROVISIONS: THE FOLLOWING PROVISIONS SHALL BE APPLICABLE ONLY IF THIS PRODUCT IS BEING PURCHASED SOLELY FOR COMMERCIAL OR INDUSTRIAL USE. IF THIS PRODUCT IS BEING PURCHASED FOR PERSONAL, FAMILY OR HOUSEHOLD PURPOSES, THE PROVISIONS CONTAINED IN THIS ARTICLE II SHALL NOT BE APPLICABLE AND THE PROVISIONS CONTAINED IN ARTICLE I ABOVE SHALL APPLY.

A. 1-YEAR LIMITED WARRANTY

The Manufacturer warrants to the Buyer that all supplied parts shall be free of defects in material and workmanship for a period of one (1) year from date of original purchase. This limited warranty covers the cost of all parts and labor needed to repair any item that is found to be defective in material and workmanship. Items covered include cables, sheaves, chains, motors, reducers, switches, control panels and ground fault circuit interrupters.

B. 5-YEAR LIMITED WARRANTY ON VL/PL SERIES ALUMINUM FRAME EXTRUSION

The Manufacturer warrants to the Buyer that the frame and extrusions shall be free of defects in material and workmanship for a period of five (5) years from date of original purchase. This limited warranty covers the cost of all parts and labor needed to repair any item that is found to be defective in material and workmanship.

C. MANUFACTURER'S OBLIGATIONS

The Manufacturer's sole obligation under either of these limited warranties is the replacement or repair, at the Manufacturer's discretion, of parts found to be defective.

D. NO SPECIAL, INCIDENTAL, OR CONSEQUENTIAL DAMAGES

IN NO EVENT SHALL THE MANUFACTURER BE LIABLE TO THE BUYER OR ANY PERSON FOR ANY INDIRECT, SPECIAL, INCIDENTAL, OR CONSEQUENTIAL LOSSES OR DAMAGES CONNECTED WITH THE USE OF THE PRODUCT UNDER WARRANTY. SUCH DAMAGES FOR WHICH THE MANUFACTURER SHALL NOT BE RESPONSIBLE INCLUDE, BUT ARE NOT LIMITED TO, LOST TIME AND CONVENIENCE, LOSS OF USE OF THE PRODUCT, THE COST OF A PRODUCT RENTAL, COSTS OF GASOLINE, TELEPHONE, TRAVEL, OR LODGING, THE LOSS OF PERSONAL OR COMMERCIAL PROPERTY, AND THE LOSS OF REVENUE.

E. NO LIABILITY IN EXCESS OF PURCHASE PRICE

IN NO EVENT SHALL THE MANUFACTURER'S OBLIGATIONS UNDER THIS LIMITED WARRANTY EXCEED THE PURCHASE PRICE OF THE PRODUCT.

F. NO EXTENSION OF STATUTE OF LIMITATIONS

ANY REPAIRS PERFORMED UNDER EITHER OF THESE WARRANTIES SHALL NOT IN ANY WAY EXTEND THE RESPECTIVE STATUTES OF LIMITATIONS CONTAINED IN THIS LIMITED WARRANTY.

G. WAIVER OF OTHER WARRANTIES

THESE EXPRESS WARRANTIES ARE IN LIEU OF AND EXCLUDE ANY AND ALL OTHER WARRANTIES, EXPRESS OR IMPLIED, INCLUDING, BUT NOT LIMITED TO, THE IMPLIED WARRANTIES OR MERCHANTABILITY AND FITNESS FOR A PARTICULAR PURPOSE.

H. PROCEDURE FOR WARRANTY PERFORMANCE

If the product fails to perform to the Manufacturer's specifications, the Buyer must contact the dealer from whom the product was purchased. The Buyer must provide the dealer with the applicable model and serial numbers, the date of purchase, and the nature of the problem.

I. PREAPPROVAL OF LABOR COSTS

All labor costs related to a dealer's performance of the warranty obligations under this limited warranty must be pre-approved by Reimann & Georger Corporation

J. EXCLUSIONS FROM WARRANTY. THIS LIMITED WARRANTY DOES NOT COVER ANY OF THE FOLLOWING:

1. Equipment which has been abused, damaged, used beyond rated capacity, or which is damaged or has defects caused by repairs or service completed by persons other than authorized service personnel.
2. Costs of repairing damage caused by environmental factors which include, but are not limited to, airborne fallout, chemicals, tree sap, salt, ocean spray, and water hazards.
3. Damage caused by acts of God which include, but are not limited to, hailstorms, windstorms, tornadoes, sandstorms, lightning, floods, and earthquakes.
4. Damage under conditions caused by fire or accident, by abuse or negligence, by improper installation, by misuse, by incorrect operation, by "normal wear and tear", by improper adjustment or alteration, by alterations not done by the Manufacturer, or by failure of product parts from such alterations.
5. Costs of repairing damage caused by poor or improper maintenance, costs of normally scheduled maintenance, or the cost of replacing any parts unless done as the result of a repair covered by your one-year limited warranty.
6. Costs of modifying the product in any way once delivered to the Buyer, even if such modifications were added as a production change on other products made after the Buyer's product was built.

K. RIGHT TO MODIFY PRODUCT

The Manufacturer has the right to modify this product at any time without incurring any obligation to make the same or similar modifications on products previously purchased.

L. NO AUTHORITY TO ALTER WARRANTY

No agent, representative, distributor, or dealer has any authority to alter the terms of this warranty in any way.

M. SPECIFIC LEGAL RIGHTS

This warranty gives you specific legal rights, and you may also have other rights which vary from State to State.