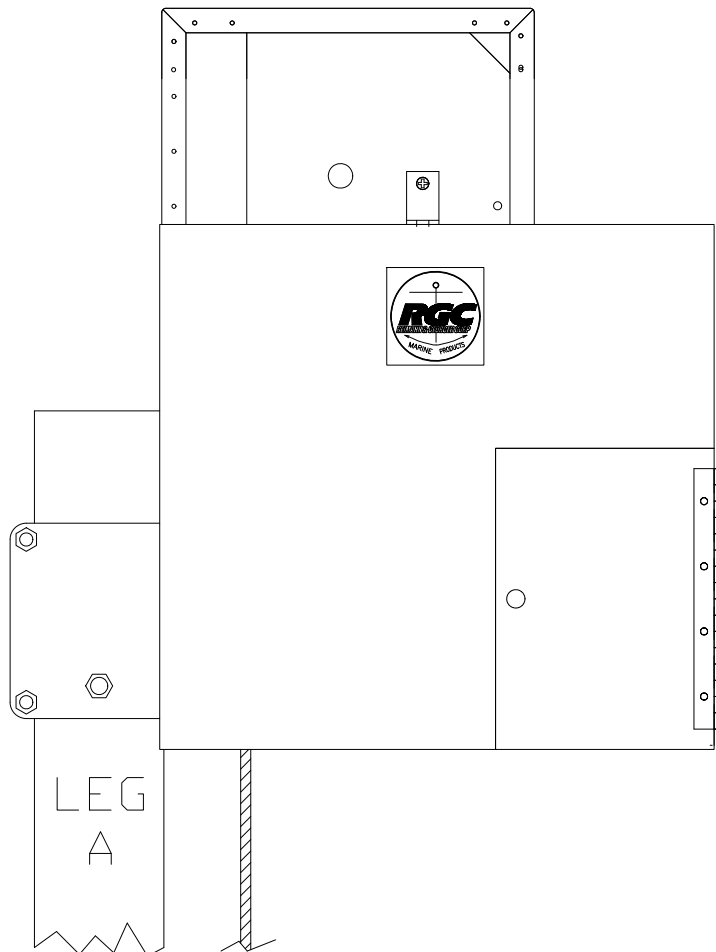




VL DIRECT DRIVE COMPACT COVER INSTRUCTIONS



REIMANN & GEORGER CORPORATION
MARINE PRODUCTS
P/N 6112049

BUFFALO, NY
2/8/11

TABLE OF CONTENTS

CHAPTER	TITLE	PAGE
1	INSTALLATION AND SETUP.....	1
1.1	Mounting the Short Guard Bracket.....	1
1.2	Guard Installation.....	2
2	PARTS LIST	4
3	AC ELECTRICAL BOX OFFSET	5

LIST OF FIGURES

FIGURE	DESCRIPTION	PAGE
2-1	Mounting Short Guard Bracket.....	1
2-2	VL Direct Drive Guard Installation	2
2-3	Installed Views of VL Direct Drive Guard.....	3
3-1	Brackets and Spacers on Electrical Box.....	5
3-2	Mounting Electrical Box to the Motor.....	6
3-3	Mounted Electrical Box View.....	6

1 INSTALLATION AND SETUP

1.1 MOUNTING THE SHORT GUARD BRACKET

1. Refer to figure 2-3. The winch cover needs to be removed. Unscrew the screws holding it in place using a Philips screw driver and slide the cover off.
2. Using a 3/8 bolt and a nylock nut, fasten the short guard bracket to the hole on the front of the winch where the pawl assembly was mounted. Once the bracket is in place, replace the winch cover, but do not fasten into place with the screws yet.

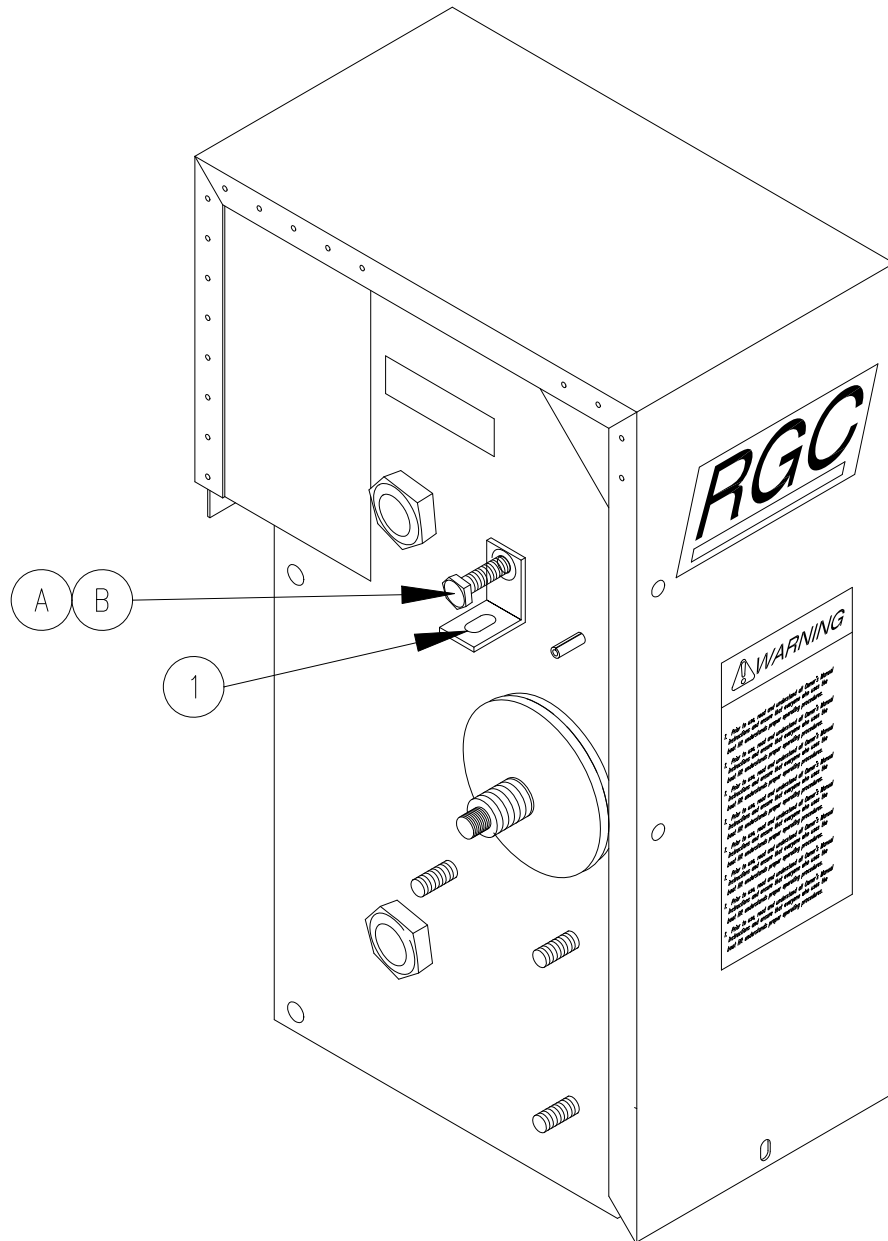


Figure 2-1 Mounting Short Guard Bracket

1.2 GUARD INSTALLATION

1. Refer to Figure 2-4. Slide the guard into place under the short bracket that was installed in step 2.4. Fasten with a 1/4" screw.
2. On the left side of the guard, align the mounting plate to the holes on the winch cover. Use the screws removed from the winch cover to fasten the plate to the winch cover. Use two 1/4" screws to fasten the other side of the plate to the guard.
3. On the right side of the guard, line up the long bracket to the hole on the winch cover. Fasten the bracket to the winch using the screw initially removed from the winch cover. Fasten the other end of the bracket to the back of the guard using one 1/4" screw.

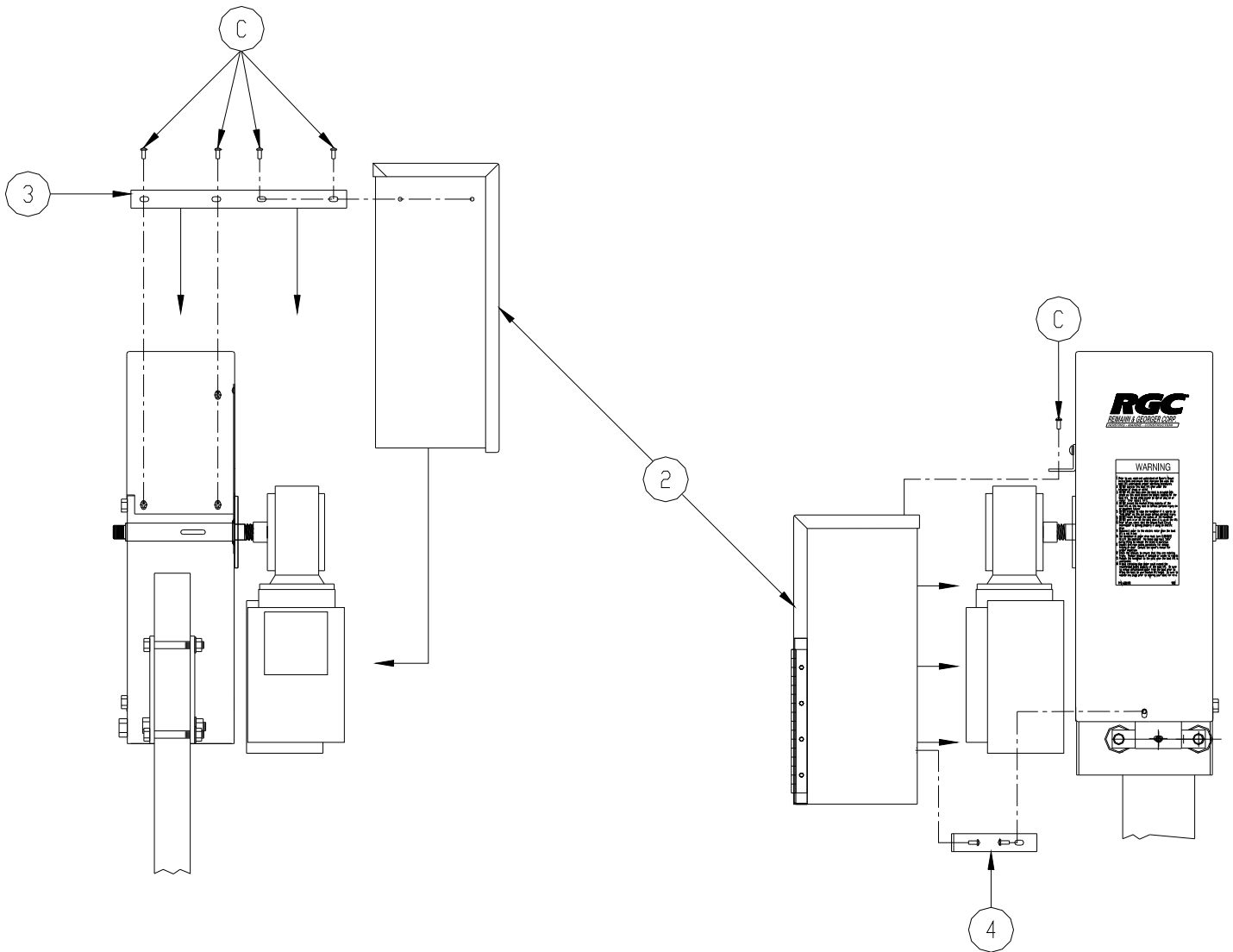


Figure 2-2
VL Direct Drive Guard Installation



WARNING:

NEVER OPERATE THE DIRECT DRIVE WITHOUT THE MOTOR GUARD IN PLACE. THIS CAN CAUSE SERIOUS PERSONAL INJURY.

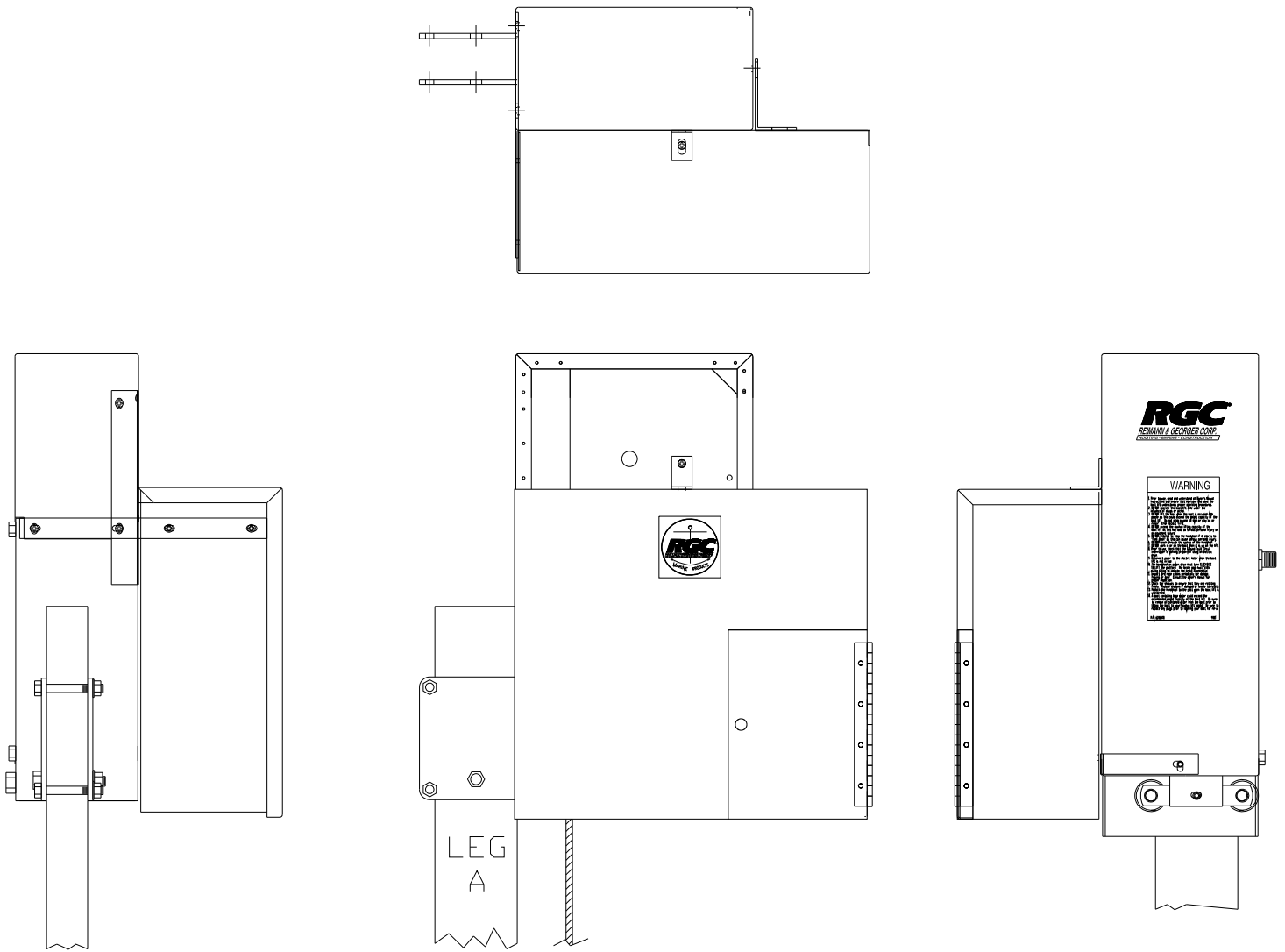


Figure 2-3 Installed Views of VLDD Guard

2 PARTS LIST

VL DIRECT DRIVE GUARD ASSEMBLY

REF #	PART #	QTY	PART DESCRIPTION
1	3763603	1	VLDD CP GUARD MNT BRKT – SHORT
2	3763215	1	VLDD COMPACT GUARD ASSY
3	3763609	1	VLDD CP GUARD MNT PLATE
4	3763606	1	VLDD CP GUARD MNT BRKT - LONG
5	3763612	2	COMPACT DRIVE ADAPTER BRKT (AC UNITS ONLY)
6	5803524	2	PLATFORM SPACER .5 LONG (AC UNITS ONLY)
A	5896246	1	HHCS 3/8-16 X 1 SS
B	5897016	1	NUT HEX NYLOCK 3/8-16 SS/ WAX
C	5806241	7	1/4-20 X 1/2" SCREW
D	5896209	2	HHCS 1/4-20 X 1-1/2 SS
E	5896373	2	NUT HEX 1/4-20 SS (AC UNITS ONLY)
F	7303606	2	SPACER 13/16"LONG (DC UNITS ONLY)

For AC Drive Units Only

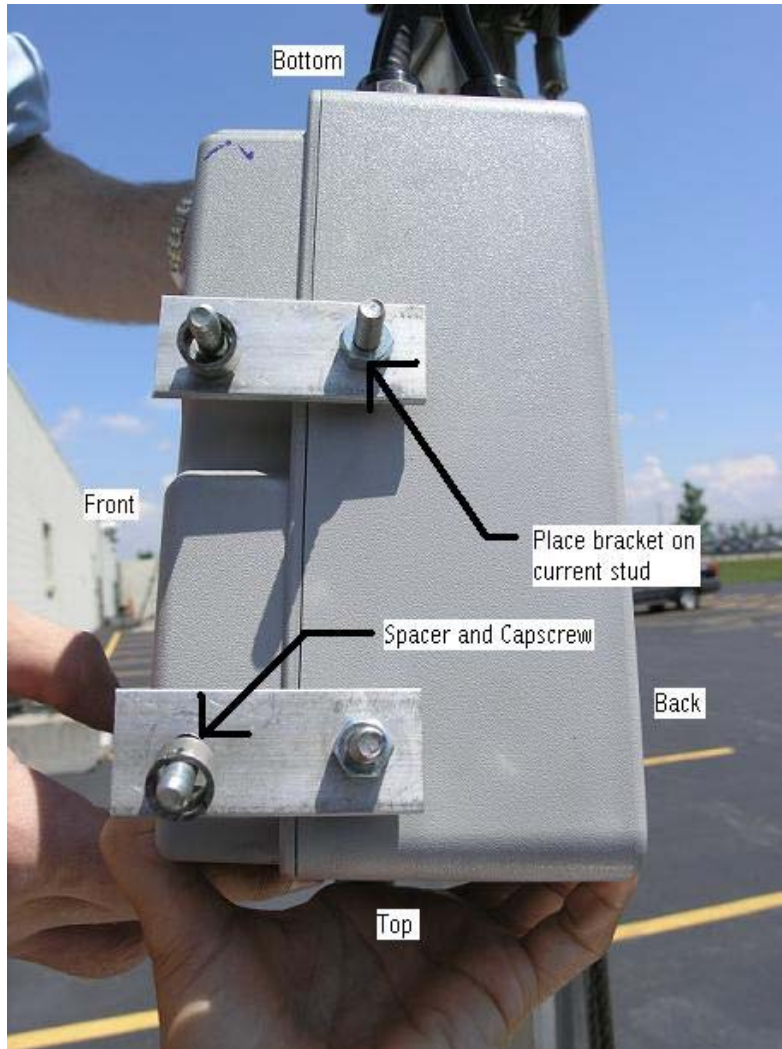


Figure 1

Figure 1 above shows the electrical box upside down. Place the cap screw (5896209) on the bracket (3763612) and orient the spacer (5803524) as shown in Figure 1. The studs already coming out of the box have 2 nuts on them. Remove one nut on each stud, and fasten the brackets to the studs as shown in Figure 1.

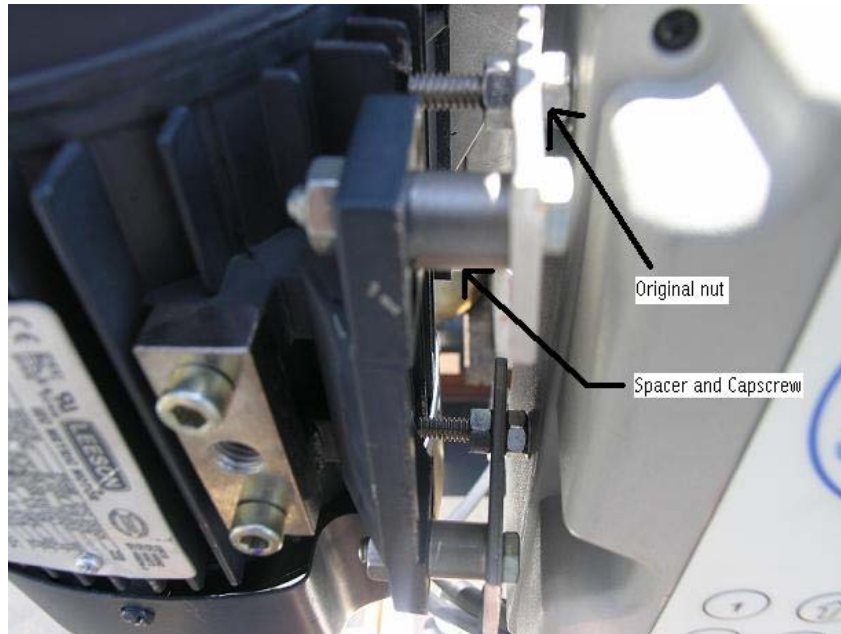


Figure 2

With the brackets in place on the box, fasten the box to the footplate on the motor using the nuts (5896373) as shown in Figure 2.



Figure 3

Figure 3 shows the electrical box attached to the motor using the brackets and spacer.



#6503124 & 6503160 DC COMMANDER DRIVE RECONFIGURATION

1. Open the Commander control box, and locate the bolts shown in fig.1. Remove the 2 bolts.

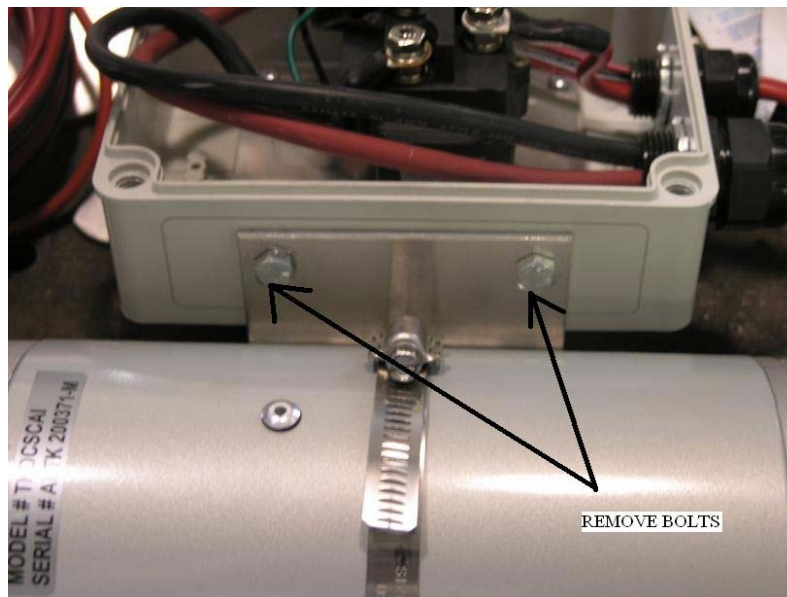


Fig.1

2. Remove the strap and mounting bracket from the motor as shown in fig. 2 and fig. 3. Turn the strap and mounting bracket around and reinstall in the same place on the motor as shown in fig. 4

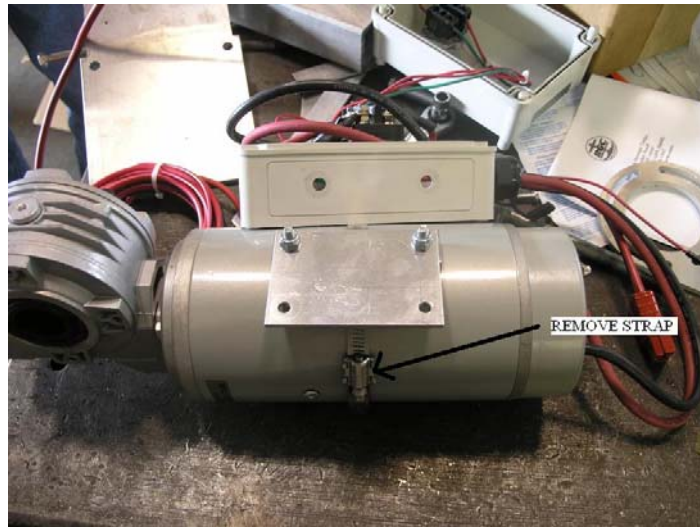


Fig. 2



Fig. 3

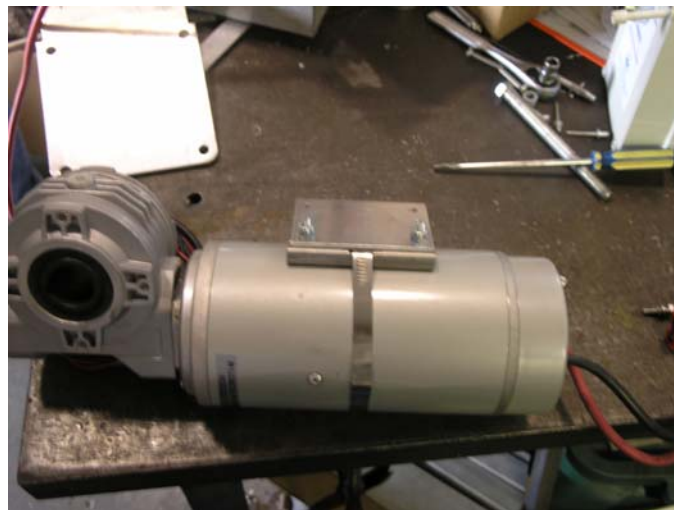


Fig. 4

3. Using the supplied bolts and spacers (fig. 5) and existing nuts and washers, reinstall control box onto mounting bracket as shown in fig. 6.



Fig. 5

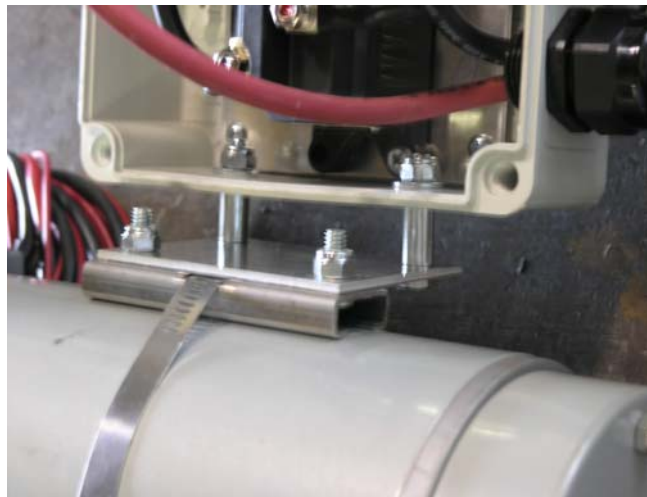


Fig. 6

4. Reinstall the cover to the control box. The commander drive unit will now fit under the optional RGC aluminum cover, pt # 3763215.