

# VL SERIES INSTRUCTIONS

# ALUMINUM VERTICAL LIFT

Thank you for purchasing an R & G Marine Products Aluminum Vertical Lift. If you should have any problems or questions please contact your local dealer, he/she will be happy to assist you. We welcome your comments and the opportunity to discuss your particular boat lift needs.

## Thank you - R & G Marine Products

---

Please examine your shipment upon receipt to be certain that it is complete and intact. Using the attached packing lists is extremely helpful. If any part is missing or damaged make the appropriate note on the delivery receipt and freight bill. Call the delivering carrier about filing the proper claims.

---

### INDEX

<b>PAGE #</b>	<b>DESCRIPTION</b>
3	SAFETY PRECAUTIONS
4-5	GENERAL VERTICAL LIFT INFORMATION
6	VL16092 PACKING LIST
7	VL26100 PACKING LIST
8	VL26108 & VL26108P PACKING LIST
9	VL36108 PACKING LIST
10	VL36116 PACKING LIST
11	VL46116 PACKING LIST
12-13	PARTS IDENTIFICATION (EXPLODED VIEW)
14	ASSEMBLY INTRODUCTION: LAYOUT
15	STEP #1: VERTICAL LEGS ASSEMBLY
16	STEP #2: FRAME (SIDES ASSEMBLY)
17	STEP #3: LOAD PLATFORM ASSEMBLY
18	STEP #4: FRAME ENDS ASSEMBLY
19	STEP #5: LOWER DIAGONAL BRACING
20	STEP #6: WINCH/HANDWHEEL MOUNTING
21	STEP #7: WINCH CABLE REEVING
22-23	STEP #8: WIRE ROPE/CABLE REEVING
24	COMPLETION - BOAT LIFT PLACEMENT
25	APPENDIX A: A-B LOAD TUBE REEVING
26	APPENDIX B: C-D LOAD TUBE REEVING
27	APPENDIX C: SPREADER TUBE REEVING
28-29	APPENDIX D: K2550 WINCH
30-31	APPENDIX E: VL R15 WINCH PARTS
32	VL OPERATION AND PRECAUTIONS
33-35	VL ACCESSORIES

## SAFETY PRECAUTIONS

Please read and thoroughly understand the following safety precautions before using your new R & G boat lift. If you have any questions, contact the dealer who sold you your lift.

- 1) Before allowing anyone to operate the boat lift, be certain they fully understand the proper operating procedure.
- 2) Install the lift to sit level. Not doing so may cause binding resulting in damage or personal injury.
- 3) All electric units must be inspected and installed by a certified electrician in accordance with local electrical codes.
- 4) Have your electrician ensure that a Ground Fault Circuit Interrupter (G.F.C.I.) is installed and working properly if your lift has an electric drive.
- 5) Tighten all nuts and bolts securely before using the boat lift.
- 6) Keep people and pets away from lift during its operation. Do not allow swimming or playing near to or on the lift.
- 7) Do not exceed the maximum lift weight capacity as this may lead to serious personal injury and/or equipment failure.
- 8) Never attempt to stop the handwheel if it starts to freewheel. This can cause serious injury!
- 9) Do not reach through the spokes of the handwheel for any reason.
- 10) Completely lower the boat lift before performing any type of maintenance or repair.
- 11) Do not work on or in the boat when it is raised on the lift.
- 12) Periodically inspect the cables for fraying. Check the cable ends to ensure that they are Securely fastened. Immediately replace any frayed or worn cables.
- 13) Examine the pulleys to be certain that they spin freely. If they bind, replace them immediately.
- 14) If slings are used, inspect them for deterioration. Replace them immediately if they are worn.
- 15) Padlock the handwheel to the post when your boat lift is unattended.
- 16) A boat with water in it from a rain storm may exceed the weight capacity of the lift. Be certain to drain the boat while it is on the lift and before loading the boat. Make sure you replace the plug before launching your boat.

R & G MARINE PRODUCTS 83 ANDERSON ROAD BUFFALO NY 14225

### 318099 - VL16092

LIFTING CAPACITY	MAXIMUM BEAM	LIFT HEIGHT	MINIMUM WATER DEPTH	LEG ADJUSTMENT	SHIPPING WEIGHT
1,600 LBS.	92"	66"	6"	20"	380 LBS.

### 394599 - VL26100

LIFTING CAPACITY	MAXIMUM BEAM	LIFT HEIGHT	MINIMUM WATER DEPTH	LEG ADJUSTMENT	SHIPPING WEIGHT
2,600 LBS.	100"	66"	6"	20"	511 LBS.

### 395099 - VL26108

LIFTING CAPACITY	MAXIMUM BEAM	LIFT HEIGHT	MINIMUM WATER DEPTH	LEG ADJUSTMENT	SHIPPING WEIGHT
2,600 LBS.	108"	66"	6"	20"	521 LBS.

### 394899 - VL26108P

LIFTING CAPACITY	MAXIMUM BEAM	LIFT HEIGHT	MINIMUM WATER DEPTH	LEG ADJUSTMENT	SHIPPING WEIGHT
2,600 LBS.	108"	66"	6"	20"	521 LBS.

### 394699 - VL36108

LIFTING CAPACITY	MAXIMUM BEAM	LIFT HEIGHT	MINIMUM WATER DEPTH	LEG ADJUSTMENT	SHIPPING WEIGHT
3,600 LBS.	108"	66"	6"	20"	538 LBS.

### 340899 - VL36116

LIFTING CAPACITY	MAXIMUM BEAM	LIFT HEIGHT	MINIMUM WATER DEPTH	LEG ADJUSTMENT	SHIPPING WEIGHT
3,600 LBS.	116"	66"	6"	20"	542 LBS.

### 394799 - VL46116

LIFTING CAPACITY	MAXIMUM BEAM	LIFT HEIGHT	MINIMUM WATER DEPTH	LEG ADJUSTMENT	SHIPPING WEIGHT
4,600 LBS.	116"	66"	7"	20"	545 LBS.

#### TOOLS REQUIRED:

ADJUSTABLE WRENCHES AND/OR  
7/8", 3/4" & 9/16" WRENCHES

R & G MARINE PRODUCTS 83 ANDERSON ROAD BUFFALO NY 14225



PLEASE NOTE THAT FOR THE FOLLOWING VERTICAL ALUMINUM LIFT ASSEMBLIES THE FULL LENGTH PIVOTING BUNKS ARE INCLUDED.

VL16092	318099
VL26100	394599
VL26108	395099
VL36108	394699
VL36116	390899
VL46116	394799

FULL LENGTH PIVOTING BUNK PACKING LIST FOR THE ABOVE LIFTS:

03793	FULL LENGTH PIVOTING BUNK COP	1 REQUIRED
03778	FULL LENGTH PIVOTING BUNK WOOD BUNDLE	1 REQUIRED
	VL26108P	03948
03807	VL PONTOON DECK BRACKETS COP	1 REQUIRED

R & G MARINE PRODUCTS 83 ANDERSON ROAD BUFFALO NY 14225

## 318099 - VL16092 PACKING LIST

### #03836 VL COMMON BUNDLE (BUNDLE 1 OF 2)

PART#	REF#	QTY	PART DESCRIPTION
03809	1	4	VL FOOT PLATE
03830	2	4	VL ADJUSTABLE LEG 29-1/2"
03832	3	4	VL HORIZONTAL 100"
08003	4	1	VL LEG "A" <i>VL Lower deck</i>
08004	5	1	VL LEG "B"
08005	6	1	VL LEG "C"
08006	7	1	VL LEG "D"

### #16037 VL16092 BUNDLE #2 OF 2

PART#	REF#	QTY	PART DESCRIPTION
03823	8 & 9	6	VL HORIZONTAL TUBE 100" LONG
16006	10	1	VL16092 LOAD TUBE ASSY (A-B REEVING)
16007	11	1	VL16092 LOAD TUBE ASSY (C-D REEVING)
02436	12	1	VL SPREADER ASSY 83" (A-D REEVING)
02437	13	1	VL SPREADER ASSY 83" (B-C REEVING)
03794	N	4	CAP PLASTIC 2 x 4 x 1/8 W
03795	O	4	CAP PLASTIC 1-1/2 x 3 x 1/8 W

### #16033 VL16092 WINCH COP

PART#	REF#	QTY	PART DESCRIPTION
03593	14	4	VL THREE HOLE PLATE
038145	15	1	WINCH K2550 W/ HOLES
06551		4	VL CORNER HRDWR BOB-CONSISTS OF
06141M	G	20	LOCKNUT 3/8-16 ESNA
06142M	E	2	LOCKNUT 1/2-13 ESNA
06247M	F	17	HHCS 3/8-16 x 1" BOLT
06255M	I	3	HHCS 3/8-16 x 3" BOLT
06288M	A	1	HHCS 1/2-13 x 3" BOLT
06290M	B	1	HHCS 1/2-13 x 3-1/2" BOLT
029961		1	VL HITCH PIN SET (4)
16087		1	VL16092 FULTON WINCH HRDWR BOB CONSISTS OF
08069		4	CAP THD - 11/32 x 1/2" LONG
03671	17	1	SPINNER KNOB ASSY
06141M	G	8	LOCKNUT 3/8-16 ESNA
06397M	K	10	HEX NUT 9/16-12
06217M	M	4	CARRIAGE BOLT 3/8-16 x 1-1/4
03835		2	VL WINCH BOLT PLATE
08100M		2	BOLT U 3/8-16 x 5-1/2" LONG

03803	18	1	VL 4' ALUMINUM HANDWHEEL
-------	----	---	--------------------------

R & G MARINE PRODUCTS 83 ANDERSON ROAD BUFFALO NY 14225

# 394599 - VL26100 PACKING LIST

## #03836 VL COMMON BUNDLE (BUNDLE 1 OF 2)

PART#	REF#	QTY	PART DESCRIPTION
03809	1	4	VL FOOT PLATE
03830	2	4	VL ADJUSTABLE LEG 29-1/2"
03832	3	4	VL LOWER DIAGONALS
08003	4	1	VL LEG "A"
08004	5	1	VL LEG "B"
08005	6	1	VL LEG "C"
08006	7	1	VL LEG "D"

## #03837 VL26100 BUNDLE #2 OF 2

PART#	REF#	QTY	PART DESCRIPTION
03823	8	4	VL HORIZONTAL TUBE (SHORT) 100" LONG
03853	9	2	VL HORIZONTAL TUBE (LONG) 108" LONG
03847	10	1	VL26100 LOAD TUBE ASSY (A-B REEVING)
03847	11	1	VL26100 LOAD TUBE ASSY (C-D REEVING)
03876	12	1	VL SPREADER ASSY 83" (A-D REEVING)
03876	13	1	VL SPREADER ASSY 83" (B-C REEVING)
03794	N	4	CAP PLASTIC 2 x 4 x 1/8 W
03795	O	4	CAP PLASTIC 1-1/2 x 3 x 1/8 W

## #03893 VL COP R15 WINCH

PART#	REF#	QTY	PART DESCRIPTION
03593	14	4	VL THREE HOLE PLATE
03904	15	1	CW R15 (R15 WINCH)
08551		4	VL CORNER HRDWR BOB-CONSISTS OF
06141M	G	20	LOCKNUT 3/8-16 ESNA
06142M	E	2	LOCKNUT 1/2-13 ESNA
06247M	F	17	HHCS 3/8-16 x 1" BOLT
06255M	I	3	HHCS 3/8-16 x 3" BOLT
06288M	A	1	HHCS 1/2-13 x 3" BOLT
06290M	B	1	HHCS 1/2-13 x 3-1/2" BOLT
029961		1	VL HITCH PIN SET (4)
06555		1	VL WINCH HRDWR R15 BOB-CONSTISTS OF
03671	17	1	SPINNER KNOB ASSY
06187		1	HEX KEY 3/16 x 4-1/2" LONG
06380M		<del>2</del>	HEX NUT 5/8-11
06257M	J	2	HHCS 3/8-16 x 3-1/2" BOLT
06141M	G	6	LOCKNUT 3/8-16 ESNA
06397M	K	<del>10</del> 8	HEX NUT 9/16-12
06217M	M	4	CARRIAGE BOLT 3/8-16 x 1-1/4

03803 18 1 VL 4" ALUMINUM HANDWHEEL

# 395099 - VL26108 & 03948 - VL26108P PACKING LIST

## #03836 VL COMMON BUNDLE (BUNDLE 1 OF 2)

PART#	REF#	QTY	PART DESCRIPTION
03809	1	4	VL FOOT PLATE
03830	2	4	VL ADJUSTABLE LEG 29-1/2"
03832	3	4	VL LOWER DIAGONALS
08003	4	1	VL LEG "A"
08004	5	1	VL LEG "B"
08005	6	1	VL LEG "C"
08006	7	1	VL LEG "D"

## #03837 VL26108 & VL26108P BUNDLE #2 OF 2

03841

PART#	REF#	QTY	PART DESCRIPTION
03823	8	4	VL HORIZONTAL TUBE (SHORT) 100" LONG
03882	9	2	VL HORIZONTAL TUBE (LONG) 116" LONG
03849	10	1	VL26108 LOAD TUBE ASSY (A-B REEVING)
03849	11	1	VL26108 LOAD TUBE ASSY (C-D REEVING)
03876	12	1	VL SPREADER ASSY 83" (A-D REEVING)
03876	13	1	VL SPREADER ASSY 83" (B-C REEVING)
03794	N	4	CAP PLASTIC 2 x 4 x 1/8 W
03795	O	4	CAP PLASTIC 1-1/2 x 3 x 1/8 W

## #03893 VL COP R15 WINCH

PART#	REF#	QTY	PART DESCRIPTION
03593	14	4	VL THREE HOLE PLATE
03904	15	1	CW R15 (R15 WINCH)
06551		4	VL CORNER HRDWR BOB-CONSISTS OF
06141M	G	20	LOCKNUT 3/8-16 ESNA
06142M	E	2	LOCKNUT 1/2-13 ESNA
06247M	F	17	HHCS 3/8-16 x 1" BOLT
06255M	I	3	HHCS 3/8-16 x 3" BOLT
06288M	A	1	HHCS 1/2-13 x 3" BOLT
06290M	B	1	HHCS 1/2-13 x 3-1/2" BOLT
029961		1	VL HITCH PIN SET (4)
06555		1	VL WINCH HRDWR R15 BOB-CONSTISTS OF
03671	17	1	SPINNER KNOB ASSY
06187		1	HEX KEY 3/16 x 4-1/2" LONG
06380M		2	HEX NUT 5/8-11
06257M	J	2	HHCS 3/8-16 x 3-1/2" BOLT
06141M	G	2	LOCKNUT 3/8-16 ESNA
06397M	K	8	HEX NUT 9/16-12
06217M	M	4	CARRIAGE BOLT 3/8-16 x 1-1/4

03803 18 1 VL 4' ALUMINUM HANDWHEEL

03807 1 VL PONTOON DECK BRACKETS (COP)  
(USED ON THE VL26108P MODEL ONLY)

R & G MARINE PRODUCTS 83 ANDERSON ROAD BUFFALO NY 14225

H051

D:\FILE\VL\SERIES\INSTR.DOC

## 394699 - VL36108 PACKING LIST

### #03836 VL COMMON BUNDLE (BUNDLE 1 OF 2)

PART#	REF#	QTY	PART DESCRIPTION
03809	1	4	VL FOOT PLATE
03830	2	4	VL ADJUSTABLE LEG 29-1/2"
03832	3	4	VL LOWER DIAGONALS
08003	4	1	VL LEG "A"
08004	5	1	VL LEG "B"
08005	6	1	VL LEG "C"
08006	7	1	VL LEG "D"

### #03842 VL36108 BUNDLE #2 OF 2

PART#	REF#	QTY	PART DESCRIPTION
03853	8	4	VL HORIZONTAL TUBE (SHORT) 108" LONG
03882	9	2	VL HORIZONTAL TUBE (LONG) 116" LONG
03851	10	1	VL36108 LOAD TUBE ASSY (A-B REEVING)
03851	11	1	VL36108 LOAD TUBE ASSY (C-D REEVING)
03877	12	1	VL SPREADER ASSY 91" (A-D REEVING)
03877	13	1	VL SPREADER ASSY 91" (B-C REEVING)
03794	N	4	CAP PLASTIC 2 x 4 x 1/8 W
03795	O	4	CAP PLASTIC 1-1/2 x 3 x 1/8 W

### #03893 VL COP R15 WINCH

PART#	REF#	QTY	PART DESCRIPTION
03593	14	4	VL THREE HOLE PLATE
03904	15	1	CW R15 (R15 WINCH)
06551		4	VL CORNER HRDWR BOB-CONSISTS OF
06141M	G	20	LOCKNUT 3/8-16 ESNA
06142M	E	2	LOCKNUT 1/2-13 ESNA
06247M	F	17	HHCS 3/8-16 x 1" BOLT
06255M	I	3	HHCS 3/8-16 x 3" BOLT
06288M	A	1	HHCS 1/2-13 x 3" BOLT
06290M	B	1	HHCS 1/2-13 x 3-1/2" BOLT
029961		1	VL HITCH PIN SET (4)
06555		1	VL WINCH HRDWR R15 BOB-CONSTISTS OF
03671	17	1	SPINNER KNOB ASSY
06187		1	HEX KEY 3/16 x 4-1/2" LONG
06380M		2	HEX NUT 5/8-11
06257M	J	2	HHCS 3/8-16 x 3-1/2" BOLT
06141M	G	2	LOCKNUT 3/8-16 ESNA
06397M	K	8	HEX NUT 9/16-12
06217M	M	4	CARRIAGE BOLT 3/8-16 x 1-1/4

03803	18	1	VL 4' ALUMINUM HANDWHEEL
-------	----	---	--------------------------

R & G MARINE PRODUCTS 83 ANDERSON ROAD BUFFALO NY 14225

## 340899 - VL36116 PACKING LIST

### #03836 VL COMMON BUNDLE (BUNDLE 1 OF 2)

PART#	REF#	QTY	PART DESCRIPTION
03809	1	4	VL FOOT PLATE
03830	2	4	VL ADJUSTABLE LEG 29-1/2"
03832	3	4	VL LOWER DIAGONALS
08003	4	1	VL LEG "A"
08004	5	1	VL LEG "B"
08005	6	1	VL LEG "C"
08006	7	1	VL LEG "D"

### #03409 VL36116 BUNDLE #2 OF 2

PART#	REF#	QTY	PART DESCRIPTION
03853	8	4	VL HORIZONTAL TUBE (SHORT) 108" LONG
03883	9	2	VL HORIZONTAL TUBE (LONG) 124" LONG
03944	10	1	VL36116 LOAD TUBE ASSY (A-B REEVING)
03944	11	1	VL36116 LOAD TUBE ASSY (C-D REEVING)
03877	12	1	VL SPREADER ASSY 91" (A-D REEVING)
03877	13	1	VL SPREADER ASSY 91" (B-C REEVING)
03794	N	4	CAP PLASTIC 2 x 4 x 1/8 W
03795	O	4	CAP PLASTIC 1-1/2 x 3 x 1/8 W

### #03893 VL COP R15 WINCH

PART#	REF#	QTY	PART DESCRIPTION
03593	14	4	VL THREE HOLE PLATE
03904	15	1	CW R15 (R15 WINCH)
06551		4	VL CORNER HRDWR BOB-CONSISTS OF
06141M	G	20	LOCKNUT 3/8-16 ESNA
06142M	E	2	LOCKNUT 1/2-13 ESNA
06247M	F	17	HHCS 3/8-16 x 1" BOLT
06255M	I	3	HHCS 3/8-16 x 3" BOLT
06288M	A	1	HHCS 1/2-13 x 3" BOLT
06290M	B	1	HHCS 1/2-13 x 3-1/2" BOLT
029961		1	VL HITCH PIN SET (4)
06555		1	VL WINCH HRDWR R15 BOB-CONSISTS OF
03671	17	1	SPINNER KNOB ASSY
06187		1	HEX KEY 3/16 x 4-1/2" LONG
06380M		-2	HEX NUT 5/8-11
06257M	J	2	HHCS 3/8-16 x 3-1/2" BOLT
06141M	G	20	LOCKNUT 3/8-16 ESNA
06397M	K	810	HEX NUT 9/16-12
06217M	M	4	CARRIAGE BOLT 3/8-16 x 1-1/4

03803 18 1 VL 4' ALUMINUM HANDWHEEL

R & G MARINE PRODUCTS 83 ANDERSON ROAD BUFFALO NY 14225

# 394799- VL46116 PACKING LIST

## #03836 VL COMMON BUNDLE (BUNDLE 1 OF 2)

PART#	REF#	QTY	PART DESCRIPTION
03809	1	4	VL FOOT PLATE
03830	2	4	VL ADJUSTABLE LEG 29-1/2"
03832	3	4	VL LOWER DIAGONALS
08003	4	1	VL LEG "A"
08004	5	1	VL LEG "B"
08005	6	1	VL LEG "C"
08006	7	1	VL LEG "D"

## #03843 VL46116 BUNDLE #2 OF 2

PART#	REF#	QTY	PART DESCRIPTION
03882	8	4	VL HORIZONTAL TUBE (SHORT) 116" LONG
03883	9	2	VL HORIZONTAL TUBE (LONG) 124" LONG
03879	10	1	VL46116 LOAD TUBE ASSY (A-B REEVING)
03879	11	1	VL46116 LOAD TUBE ASSY (C-D REEVING)
03878	12	1	VL SPREADER ASSY 99" (A-D REEVING)
03878	13	1	VL SPREADER ASSY 99" (B-C REEVING)
03795	O	4	CAP PLASTIC 1-1/2 x 3 x 1/8 W

## #03893 VL COP R15 WINCH

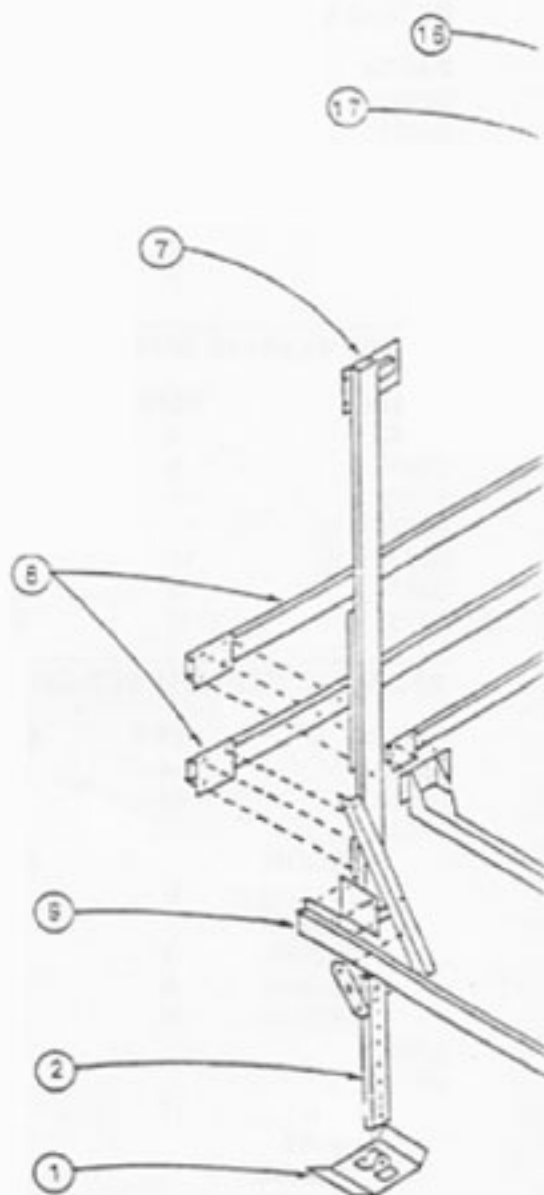
PART#	REF#	QTY	PART DESCRIPTION
03593	14	4	VL THREE HOLE PLATE
03904	15	1	CW R15 (R15 WINCH)
06551		4	VL CORNER HRDWR BOB-CONSISTS OF
06141M	G	20	LOCKNUT 3/8-16 ESNA
06142M	E	2	LOCKNUT 1/2-13 ESNA
06247M	F	17	HHCS 3/8-16 x 1" BOLT
06255M	I	3	HHCS 3/8-16 x 3" BOLT
06288M	A	1	HHCS 1/2-13 x 3" BOLT
06290M	B	1	HHCS 1/2-13 x 3-1/2" BOLT
029961		1	VL HITCH PIN SET (4)
06555		1	VL WINCH HRDWR R15 BOB-CONSISTS OF
03671	17	1	SPINNER KNOB ASSY
06187		1	HEX KEY 3/16 x 4-1/2" LONG
06380M		2	HEX NUT 5/8-11
06257M	J	2	HHCS 3/8-16 x 3-1/2" BOLT
06141M	G	2	LOCKNUT 3/8-16 ESNA
06397M	K	8	HEX NUT 9/16-12
06217M	M	4	CARRIAGE BOLT 3/8-16 x 1-1/4

03803	18	1	VL 4' ALUMINUM HANDWHEEL
-------	----	---	--------------------------

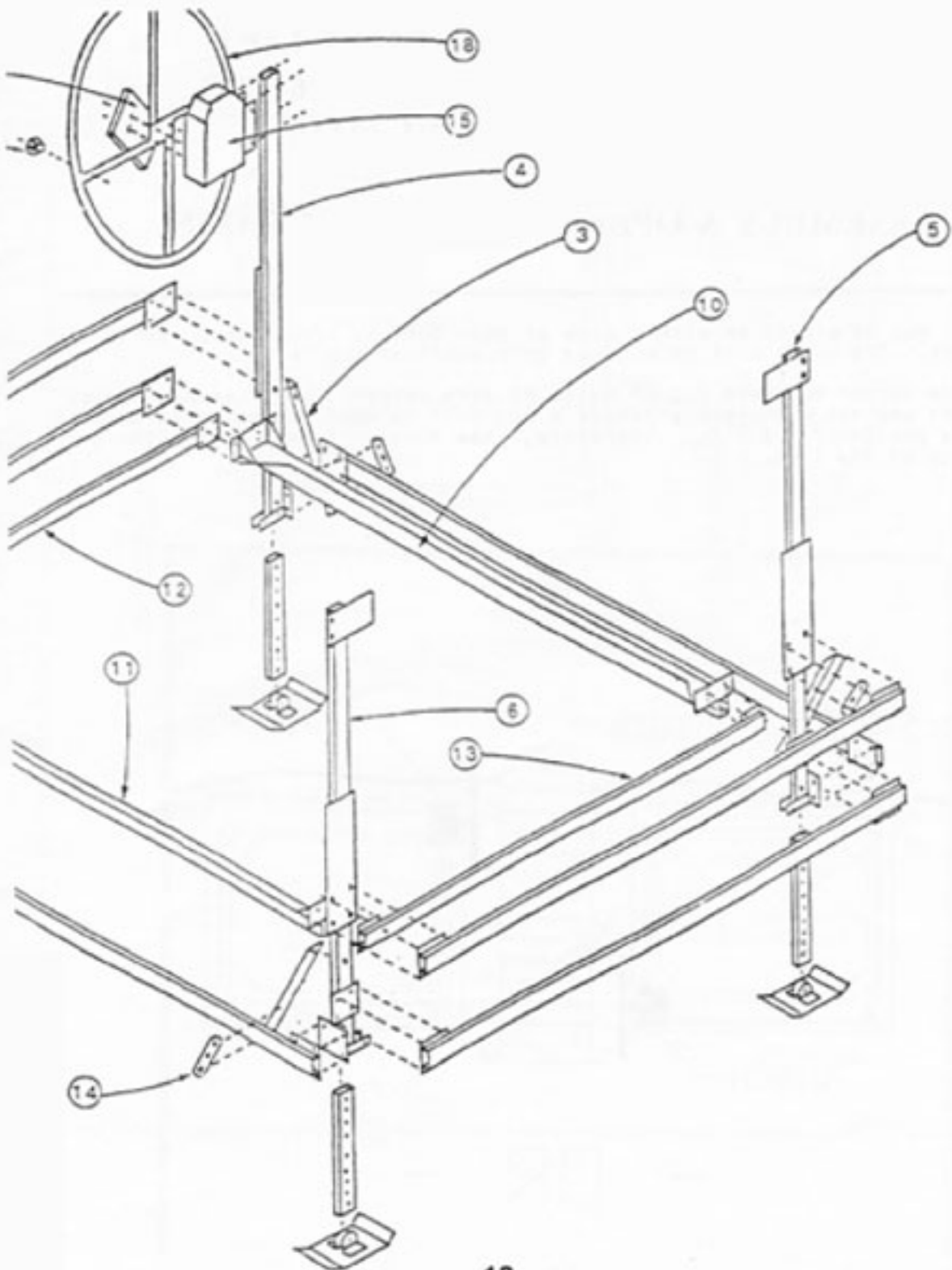
R & G MARINE PRODUCTS 83 ANDERSON ROAD BUFFALO NY 14225

VL SERIES

REF#	QTY	PART DESCRIPTION
1	4	ALUMINUM FOOT PLATES
2	4	VL ADJUSTABLE LEGS
3	4	VL LOWER DIAGONALS
4	1	VERTICAL Leg "A"
5	1	VERTICAL Leg "B"
6	1	VERTICAL Leg "C"
7	1	VERTICAL Leg "D"
8	4	HORIZONTAL TUBES - SHORT
9	2	HORIZONTAL TUBES - LONG
10	1	A-B LOAD TUBE
11	1	C-D LOAD TUBE
12	1	A-D SPREADER TUBE
13	1	B-C SPREADER TUBE
14	4	3-HOLE PLATES
15	1	CHAIN WINCH
16	1	"4' HANDWHEEL" DECAL
17	1	SPINNER KNOB
18	1	HANDWHEEL



• THE FOLLOWING ASSEMBLY INSTRUCTIONS USES THE PART REFERENCE NUMBER •



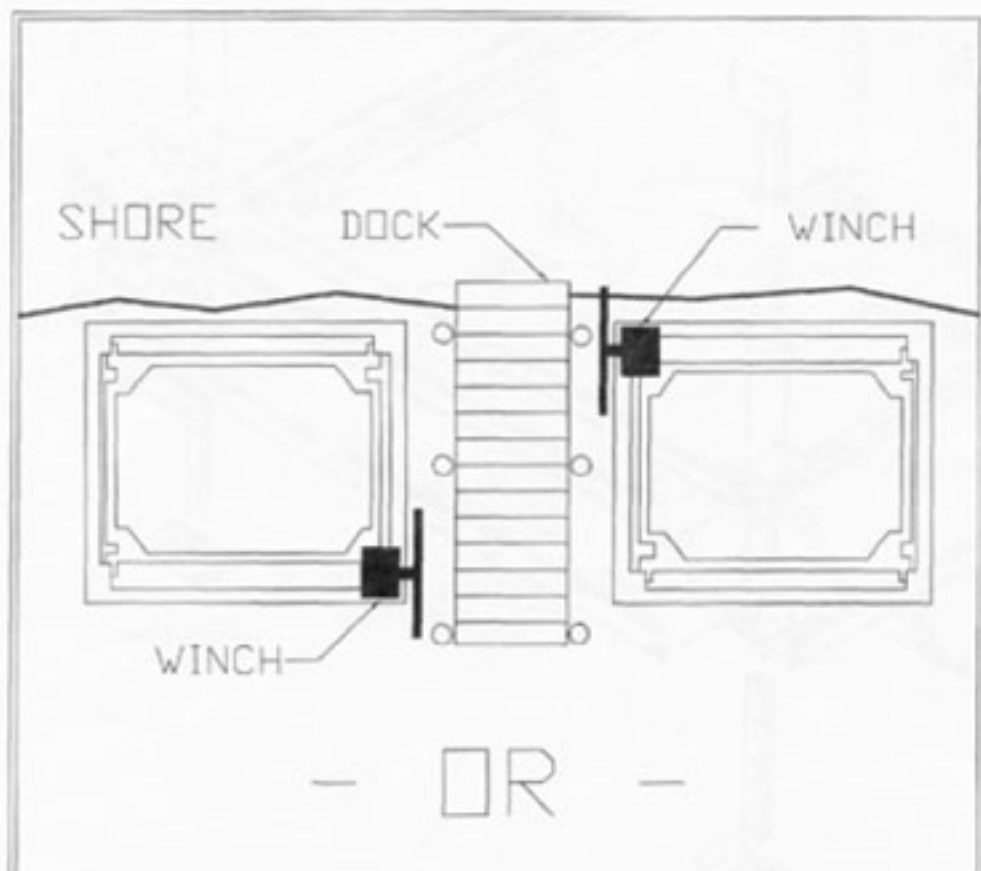
-13-

# ALUMINUM VERTICAL BOAT LIFT MODELS: VL16092,VL26100,VL26108P, VL36108,VL36116 & VL46116

## ASSEMBLY & OPERATING INSTRUCTIONS

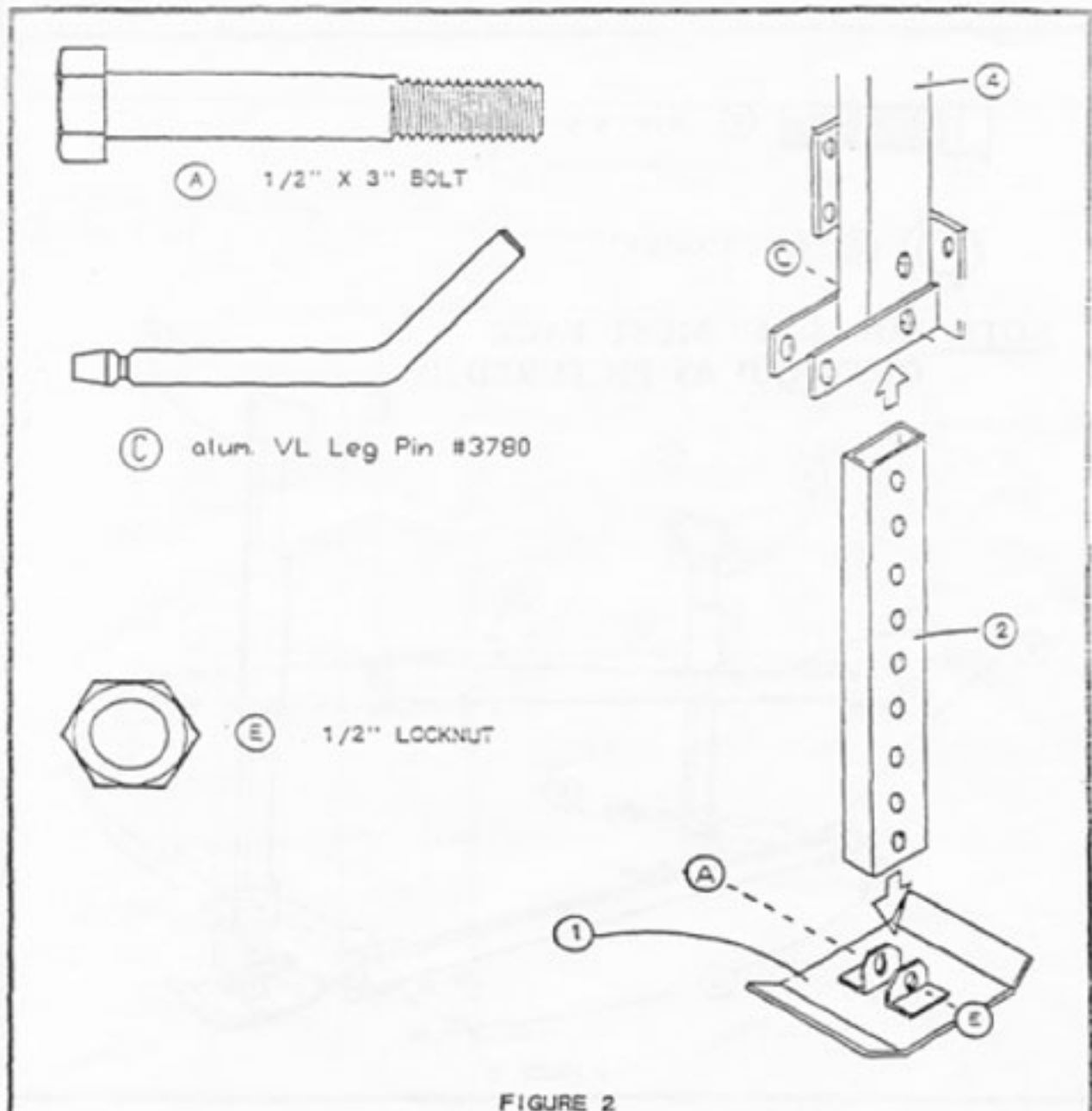
The lift may be placed on either side of your dock as illustrated below in FIGURE #1. The winch will be mounted onto vertical leg "A".

Place one corner hardware bag of bolts at each corner. When assembling your boat lift use two washers everywhere a hex bolt is used. Also, insert bolts from the inside of the lift, therefore, the nuts will fasten onto the outside face of the lift.



## STEP #1 - VERTICAL LEG ASSEMBLY

- Mount a #2 ADJUSTABLE LEG onto each of the #1 FOOT PLATES, and insert into the bottoms of each of the VERTICAL LEGS A, B, C, D (#4-7).
- Refer to FIGURE #2. Vertical leg "A" is shown



## STEP #2 - FRAME ASSEMBLY

- Mount a pair of #8 HORIZONTAL TUBES - SHORT onto each side of the lift, joining vertical legs "B" and "C".
- Repeat the preceding procedure to join vertical legs "A" and "D".
- Lay the assembled sides down on the ground, parallel, about 9' apart, with the foot plates facing one another.
- Refer to FIGURE #3 below. Vertical legs "B" and "C" are shown.



(F) 3/8" X 1" BOLT



(G) 3/8" LOCKNUT

**NOTE:** BOLTS "F" MUST FACE  
OUTWARD AS PICTURED !!!

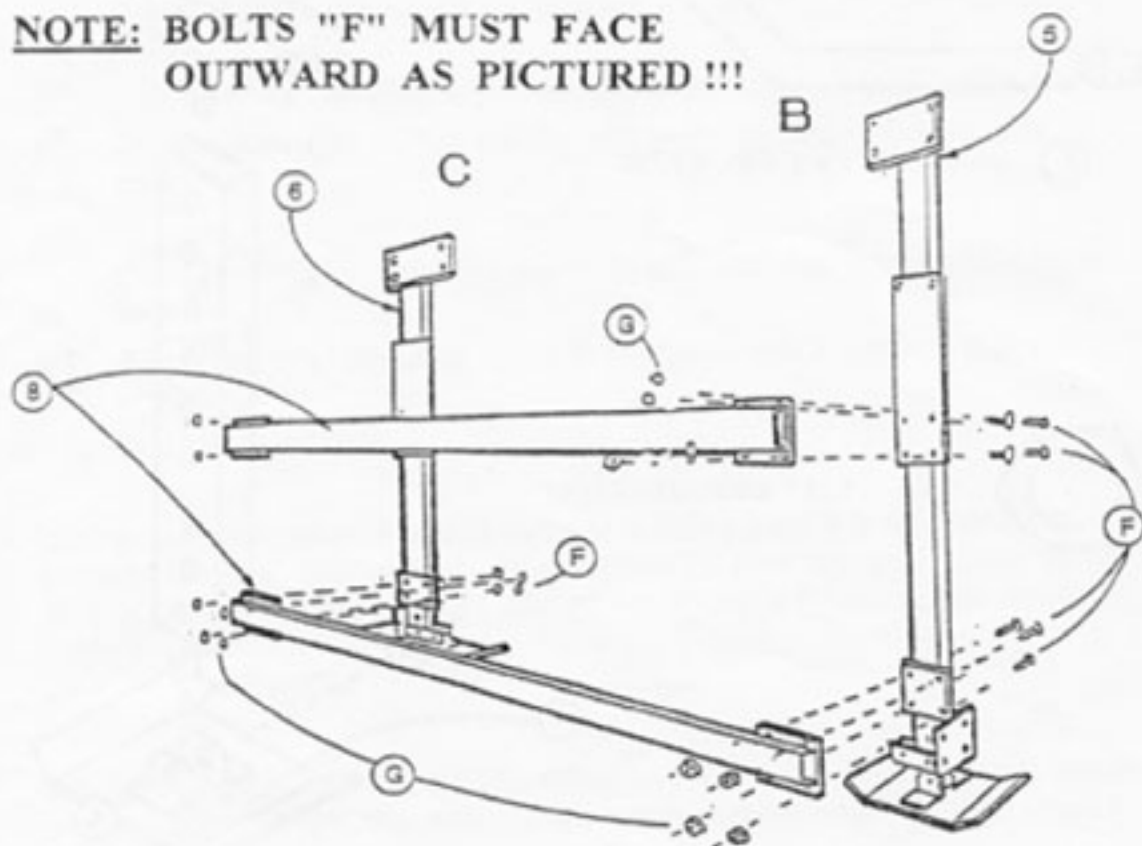
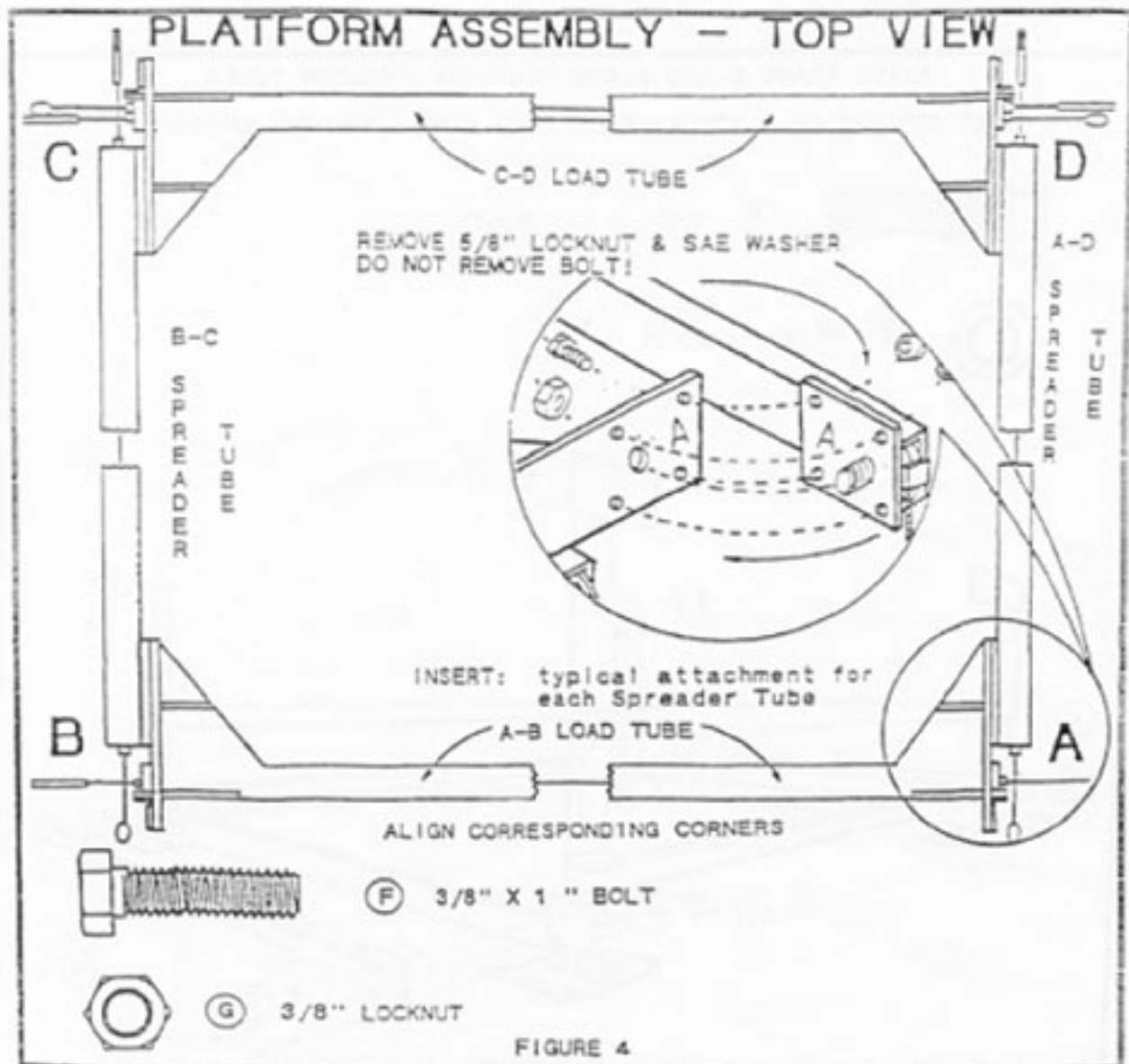


FIGURE 3

## STEP #3 - PLATFORM ASSEMBLY

- Position both the #10 & 11 LOAD TUBES and the #12 & 13 SPREADER TUBES onto the ground so that the labeled "A"- "D" corners correspond.
- Remove the 5/8" LOCKNUT and SAE WASHER from the Spreader Tubes but DO NOT REMOVE THE BOLT from the tube.
- Align the holes and fasten with 3/8" hardware.
- Reattach the 5/8" LOCKNUT and WASHER.
- Refer to FIGURE #4 below.



## STEP #4 - FRAME ASSEMBLY

- Lift one of the frame sides and position along a spreader tube side of the carriage platform.
- Place a platform corner onto each of the foot plates so that the side stands. Have someone hold onto the side to ensure that it doesn't fall.
- Repeat for the other side of the boat lift.
- Attach a #9 HORIZONTAL TUBE - LONG across each end, connecting the two sides. Fasten with 3/8" hardware as before, in STEP #2 FRAME ASSEMBLY.
- Refer to FIGURE #5.

RAISE FRAME SIDES ALONG PLATFORM SPREADER TUBES

SET CORNERS OF PLATFORM ONTO FOOT PLATES TO HOLD UPRIGHT



(F) 3/8" X 1" BOLT



(G) 3/8" LOCKNUT

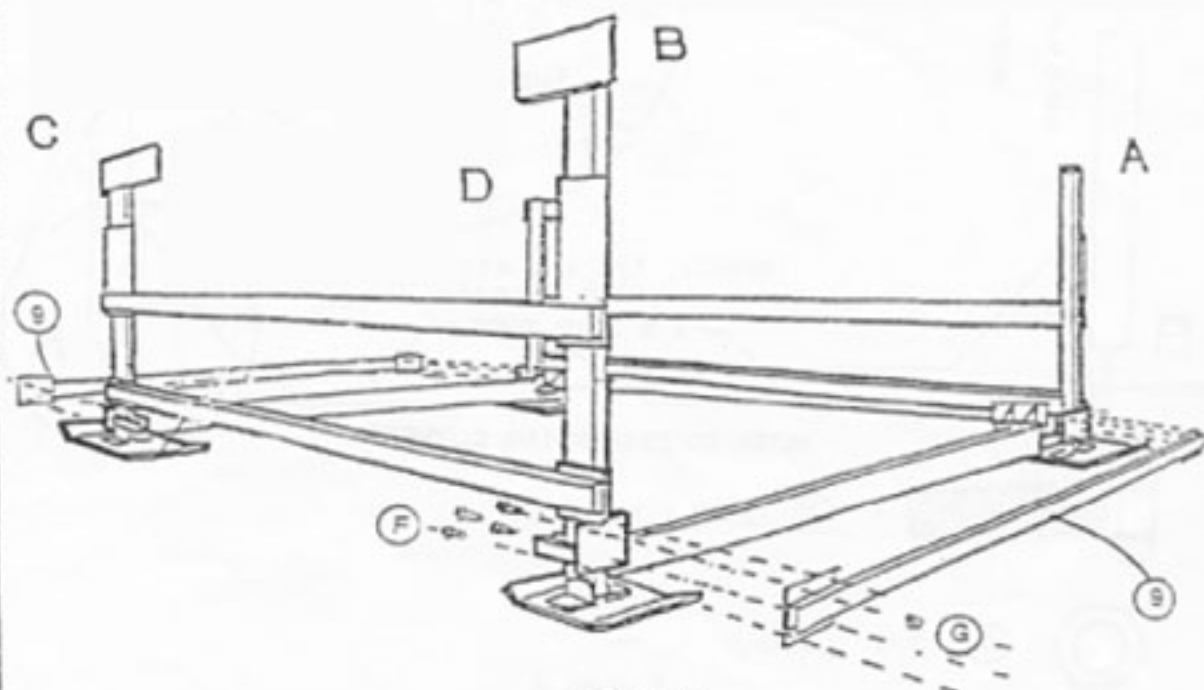
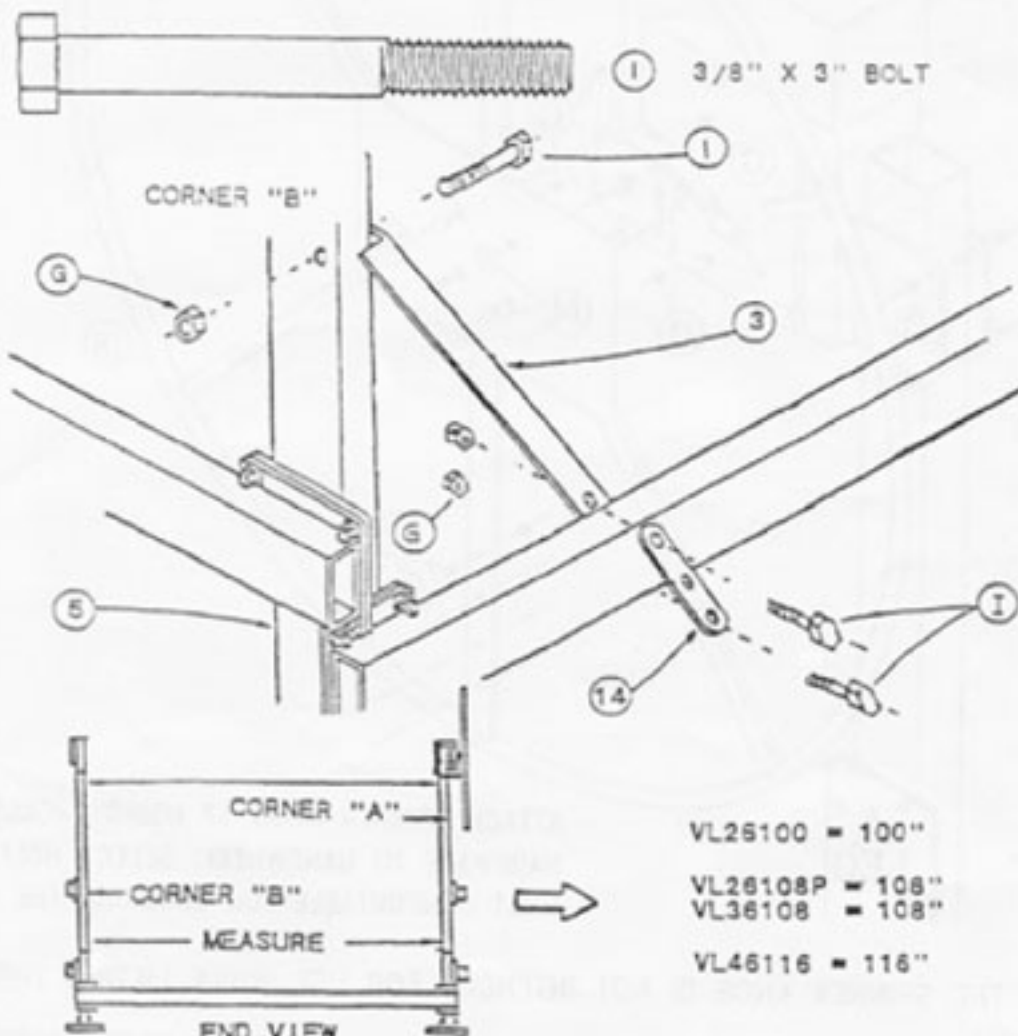


FIGURE 5

## STEP #5 - LOWER DIAGONALS

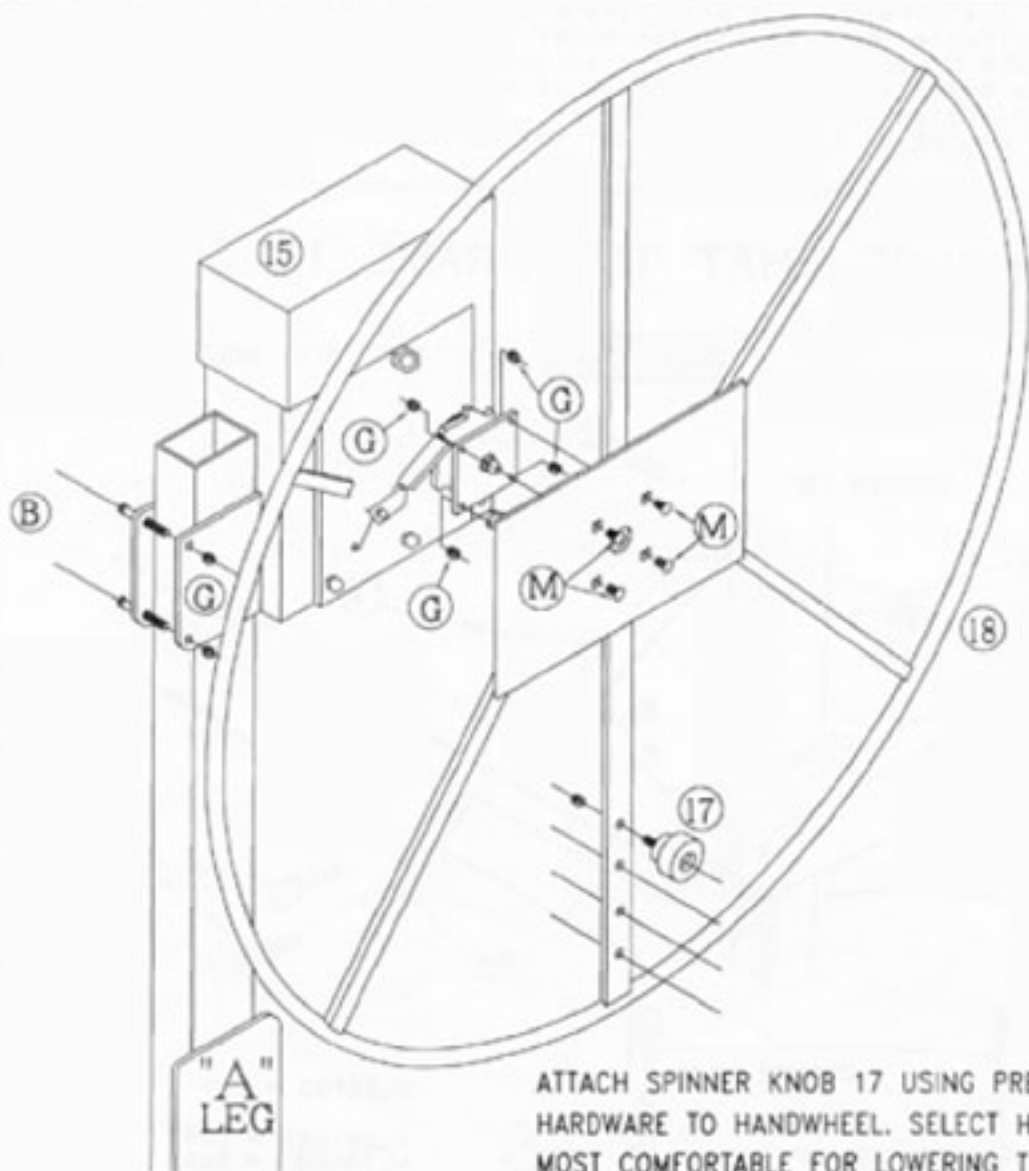
- Position a #3 LOWER DIAGONAL on the inside of vertical "B" as illustrate below. Loosely fasten with a 3/8" X 3" bolt, and locknut.
- Position the opposite end along the end horizontal tube so that the tube is situated between the two holes located in the lower diagonal.
- Place a #14 3-HOLE PLATE onto the outside face of the horizontal tube.
- Align the holes and fasten in place using two 3/8" X 3" bolts.
- Repeat this step for each corner.
- Refer to FIGURE #6 below. Vertical leg "B" is shown.

### ■ ENSURE THAT THE FRAME IS SQUARE!



## STEP #6 - WINCH/HANDWHEEL MOUNTING

- CLAMP WINCH 15 TO VERTICAL LEG "A" USING BOLTS B AND NUTS G LOCATED IN THE WINCH HARDWARE BAG OF BOLTS.
- ATTACH HANDWHEEL TO WINCH HUBPLATE WITH 4 CARRIAGE BOLTS M AND NUTS G.



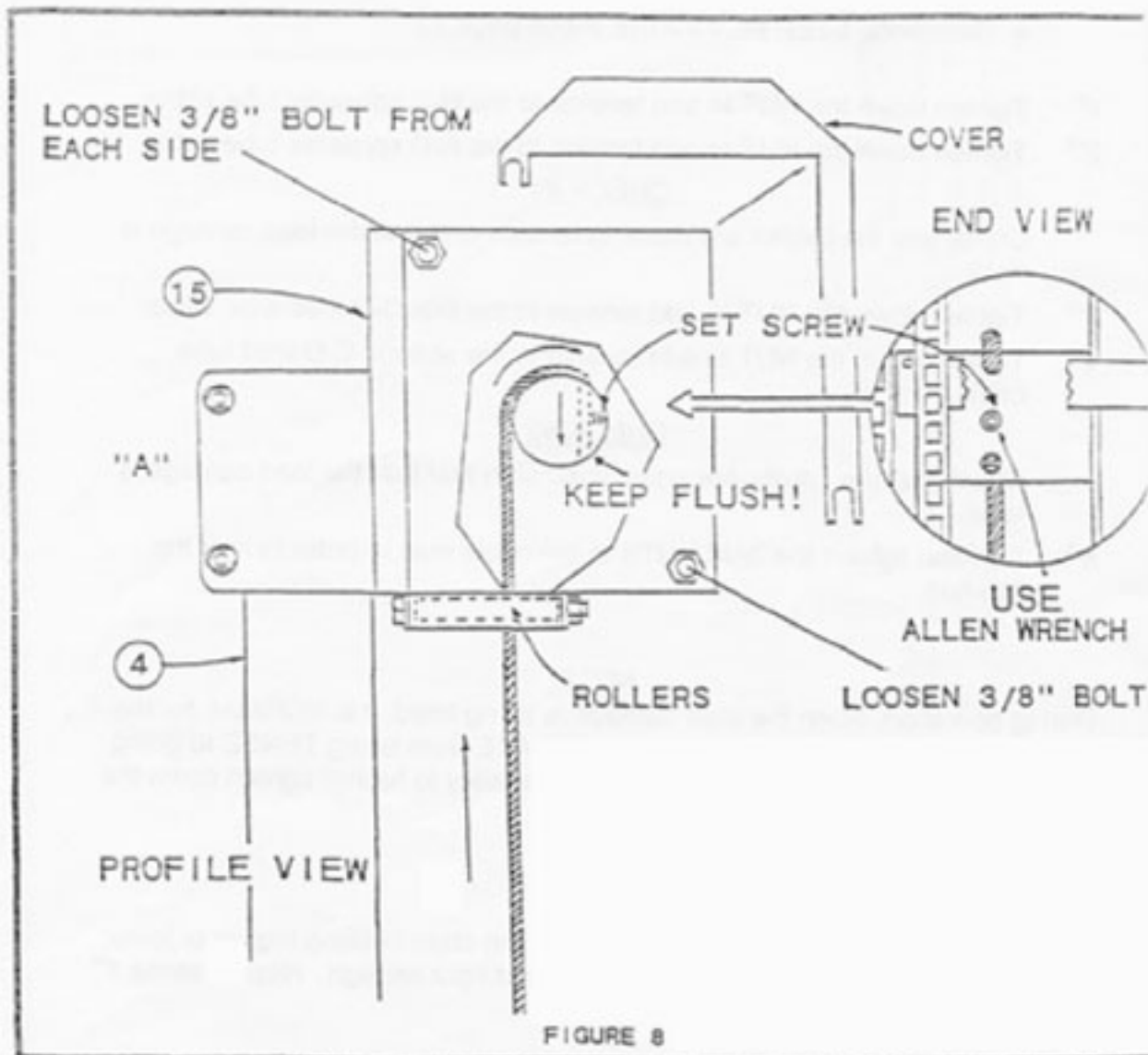
ATTACH SPINNER KNOB 17 USING PREASSEMBLED HARDWARE TO HANDWHEEL. SELECT HOLE THAT IS MOST COMFORTABLE FOR LOWERING THE LIFT.

NOTE: THE SPINNER KNOB IS NOT INTENDED FOR USE WHILE LIFTING THE BOAT!

1655 0-VERTICAL/INSTRUCT/INDWLTZDVG

## STEP #7 - WINCH CABLE REEVING

- Remove the cover from the winch housing by loosening the three 3/8" bolts.
- Position the winch drum so that the set screw faces at a 90° angle from is perpendicular to, the vertical leg "A".
- Pass the cable from the back side, up over the top of the winch drum and insert into the hole. Keep the cable flush with the drum wall.  
DO NOT ALLOW ANY OF THE CABLE TO EXTEND OUT THE WINCH DRUM!
- Secure the cable by tightening down the set screw using the ALLEN WRENCH included in the VL WINCH HARDWARE BAG.
- Refer to FIGURE #8 below.



## STEP #8 - CABLE REEVING & ADJUSTMENT

Tool required: 7/8" Open-end wrench

- Position the load carriage near the bottom end of its lifting range.
- Ensure that the load carriage is level.
- Reference STEP #8, FIGURE #9 on page 23.

1<sup>st</sup> Tighten down the NUT to add tension to the B-C spreader tube cable.

2<sup>nd</sup> Tighten down the NUT to add tension to the A-D spreader tube cable.

### CHECK #1

Check that the cables are equal in tension and that the load carriage is level.

3<sup>rd</sup> Tighten down the NUT to add tension to the first C-D load tube cable.

4<sup>th</sup> Tighten down the NUT to add tension to the second C-D load tube cable.

### CHECK #2

Check that the cables are equal in tension and that the load carriage is level.

5<sup>th</sup> Add and tighten the JAM NUTS to the cable nuts in order to lock the position.

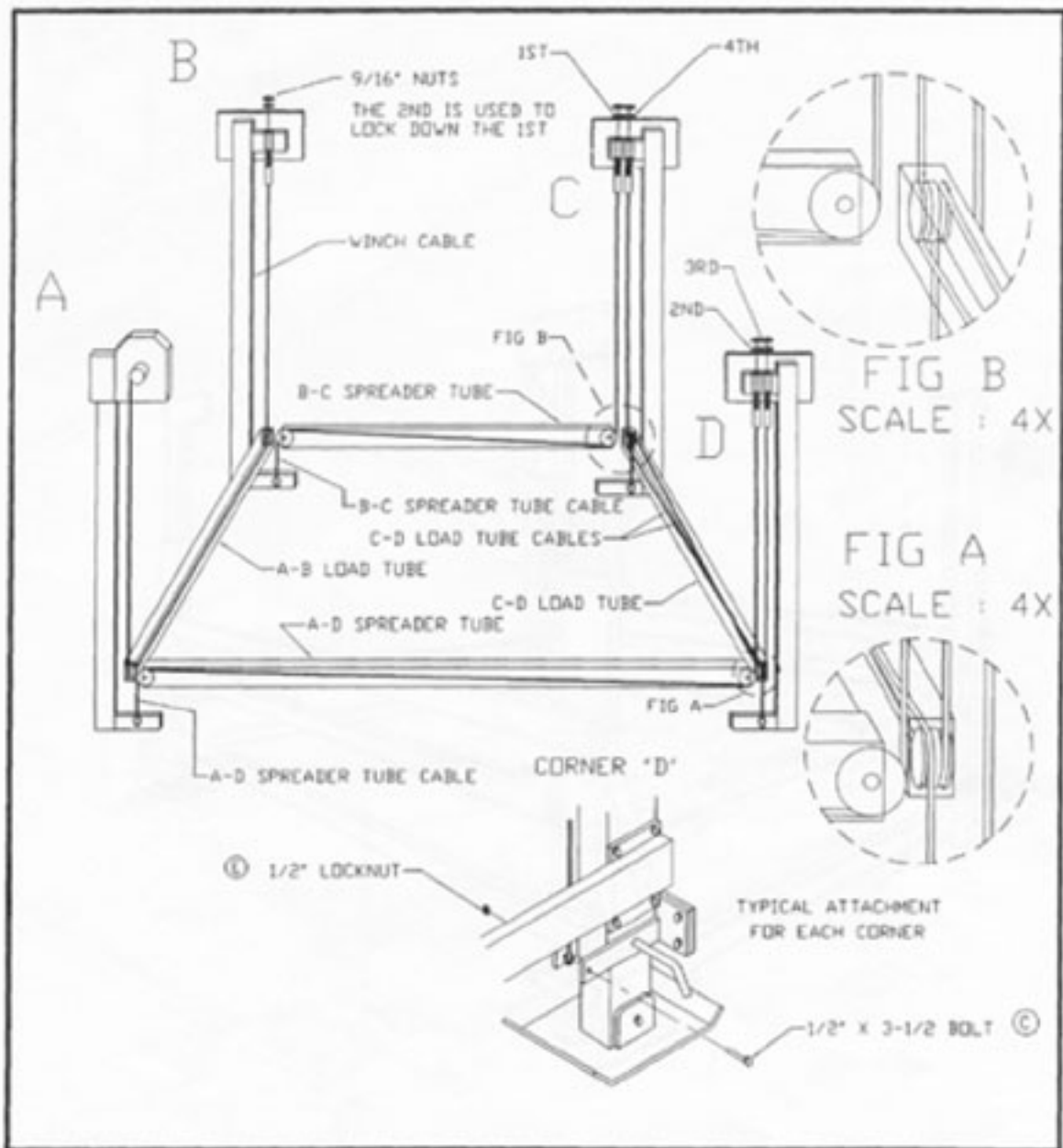
### NOTE:

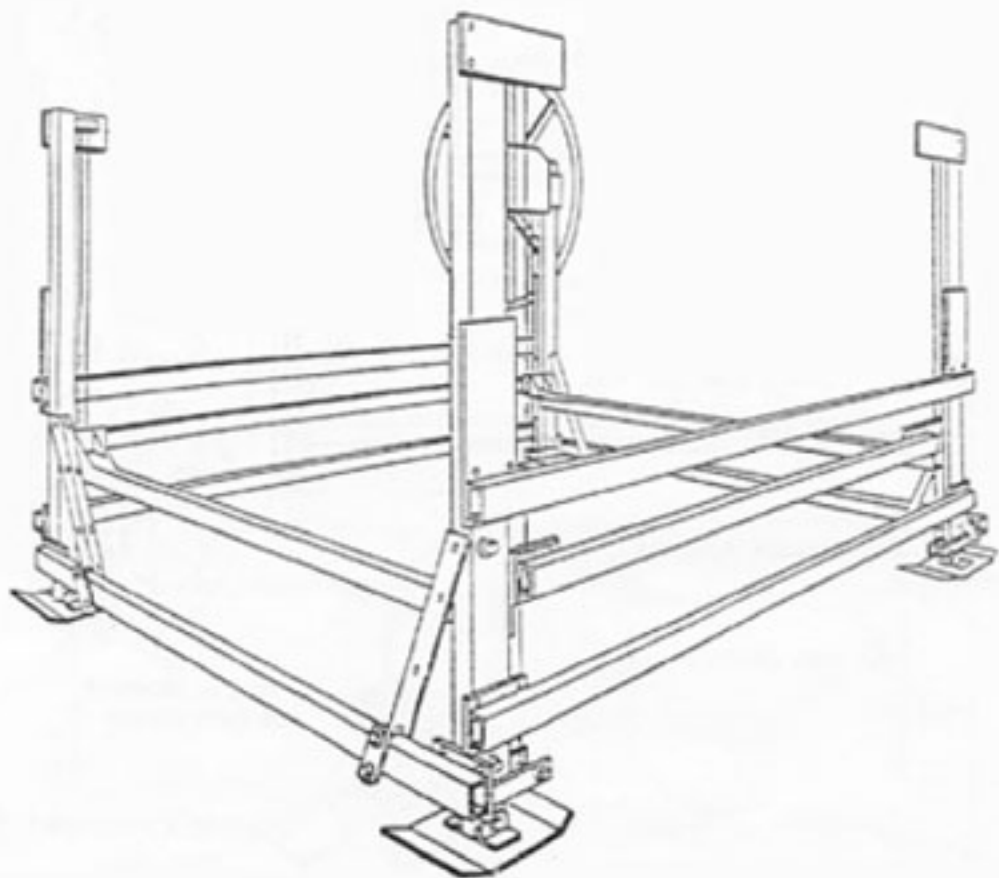
During operation, when the load carriage is being lifted, it is **NORMAL** for the two cables in the C-D load tube to **ALTERNATE** from being **TENSE** to going **SLACK**. If you see this happen, it is not necessary to further tighten down the nuts.

### NOTE:

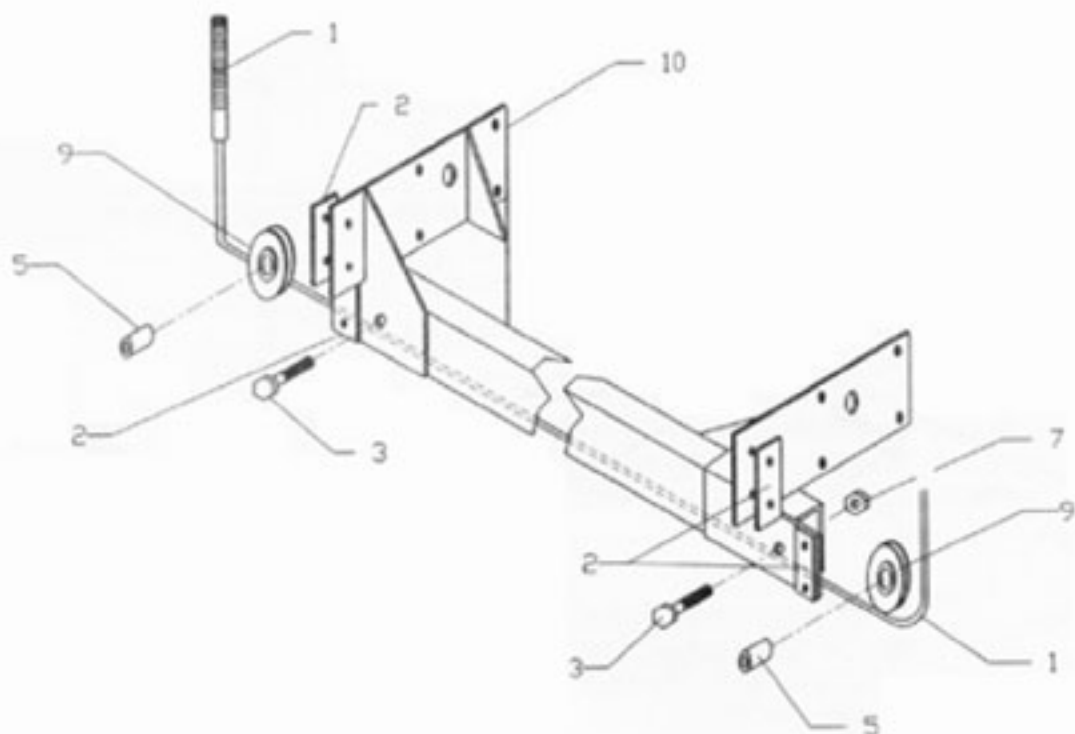
If the boat is **NOT LIFTING LEVEL** because the stern is lifting higher or lower than the bow, the spreader tube cables are not tight enough. Repeat steps 1<sup>st</sup> through **CHECK #1**.

# STEP #8 - CABLE REEVING & ADJUSTMENT



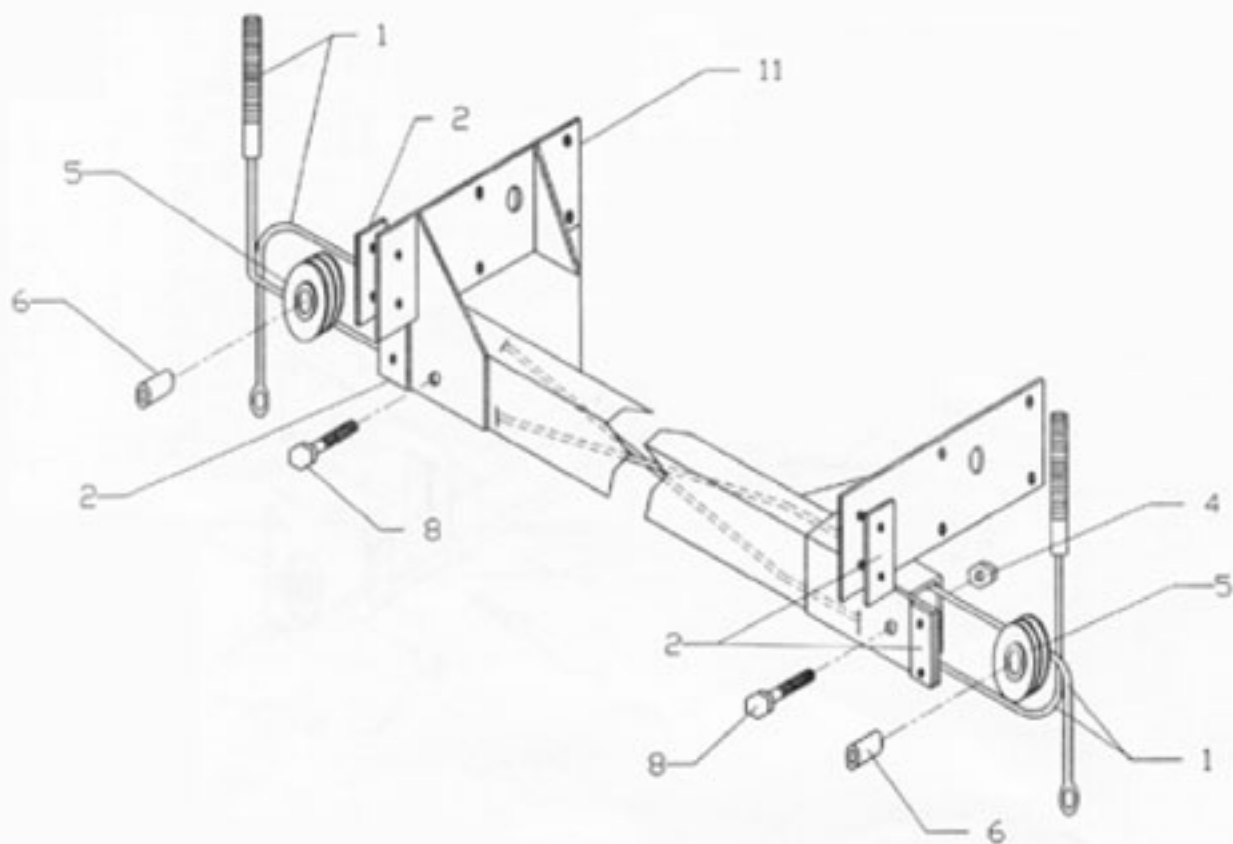


# APPENDIX A: A-B LOAD TUBE



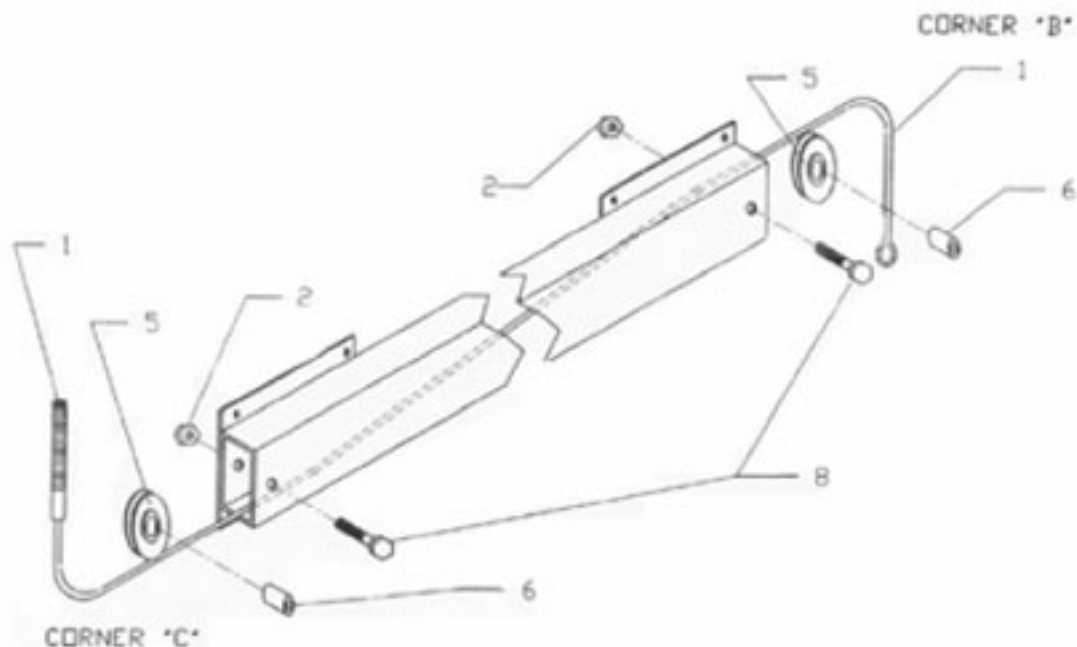
REF#	PART#	QTY	DESCRIPTION
1	8008	1	VL26100 & VL26108P Winch Cable Assy: 1/4" x 25'
	3865	1	VL36108 & VL46116 Winch Cable Assy: 5/16" x 25'
2	8002	4	Glide Plates - 1 1/2" x 4"
3	6306	2	5/8" x 3 1/2" Bolts
5	3846	2	VL Sheave Sleeves
7	6143	2	5/8" Locknuts w/ Nylon Insert
9	624	2	VL Sheaves w/ Bearing
10	3834	1	VL26100 Load Tube
	3868	1	VL26108P Load Tube
	3880	1	VL36108 Load Tube
	3890	1	VL46116 Load Tube

# APPENDIX B: C-D LOAD TUBE



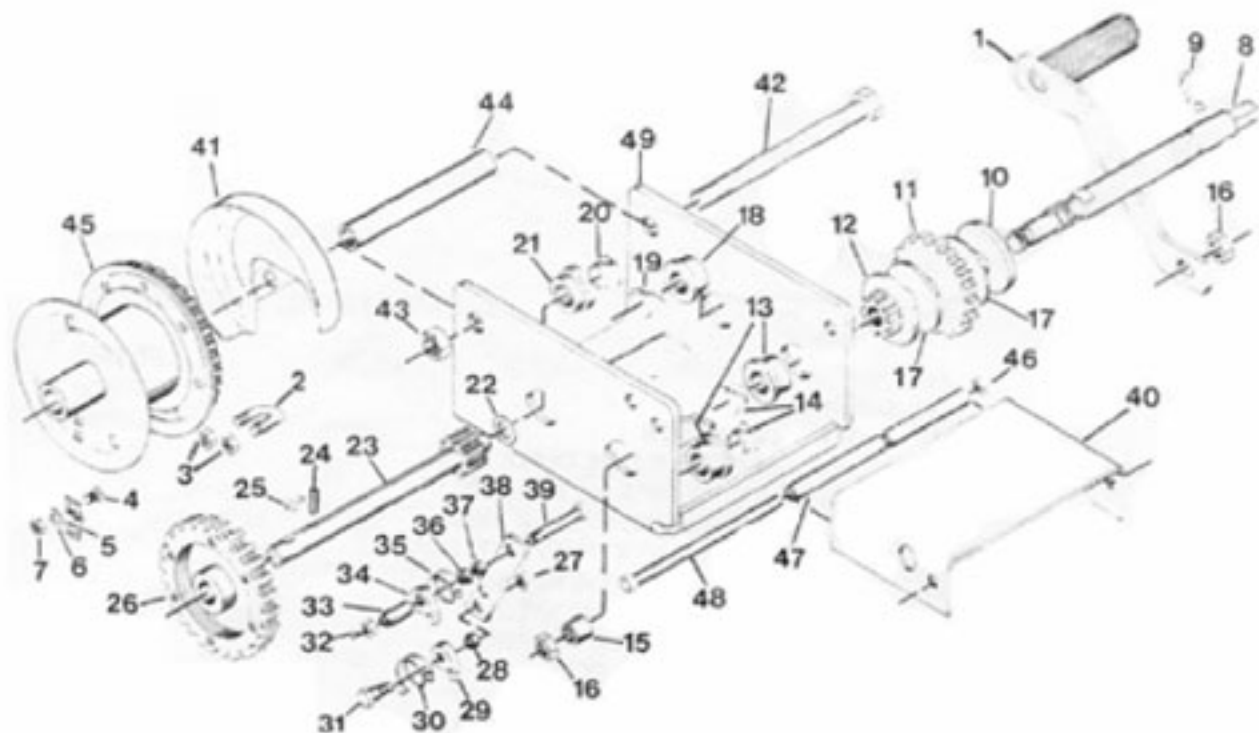
REF#	PART#	QTY	DESCRIPTION
1		2	C-D LOAD TUBE CABLES
	3864		VL26100 1/4" X 186 3/4" - BROWN
	3867		VL26108P 1/4" X 154 3/4" - BLUE
	3867		VL36108 1/4" X 194 3/4" - BLUE
	8009		VL46116 1/4" X 202 3/4" -WHITE
2	8002	4	GLIDE PLATES 1 1/2" X 4"
4	6143	2	5/8" LOCKNUTS W/ NYLON INSERT
5	624	4	VL SHEAVES W/ BEARINGS
6	3846	2	VL SHEAVE SLEEVES
8	6306	2	5/8" X 3 1/2" BOLTS
11	3834	1	VL26100 LOAD TUBE
	3868	1	VL26108P LOAD TUBE
	3880	1	VL36108 LOAD TUBE
	3890	1	VL46116 LOAD TUBE

# APPENDIX C: A-D SPREADER TUBE & B-C SPREADER TUBE (SHOWN)



REF#	PART#	QTY	DESCRIPTION
1		1	SPREADER TUBE CABLE
	3860		VL26100 1/4" X 169 1/2" -RED
	3860		VL26108P 1/4" X 169 1/2" -RED
	3863		VL36108 1/4" X 177 1/2" - YELLOW
	3866		VL46116 1/4" X 185 1/2" -BLACK
2	6143	2	5/8" LOCKNUTS W/ NYLON INSERT
4	624	2	VL SHEAVES W/ BEARINGS
5	3848	2	VL SHEAVE SLEEVES
6	6306	2	5/8" X 3 1/2" BOLTS
8	3783	1	VL26100 A-D SPREADER TUBE
11	3783	1	VL26108P A-D SPREADER TUBE
	3783	1	VL36108 A-D SPREADER TUBE
	3783	1	VL46116 A-D SPREADER TUBE
	3783	1	VL26100 B-C SPREADER TUBE
	3783	1	VL26108P B-C SPREADER TUBE
	3783	1	VL36108 B-C SPREADER TUBE
	3783	1	VL46116 B-C SPREADER TUBE

# APPENDIX D: VL FULTON K2550 WINCH USED ON THE VL16092



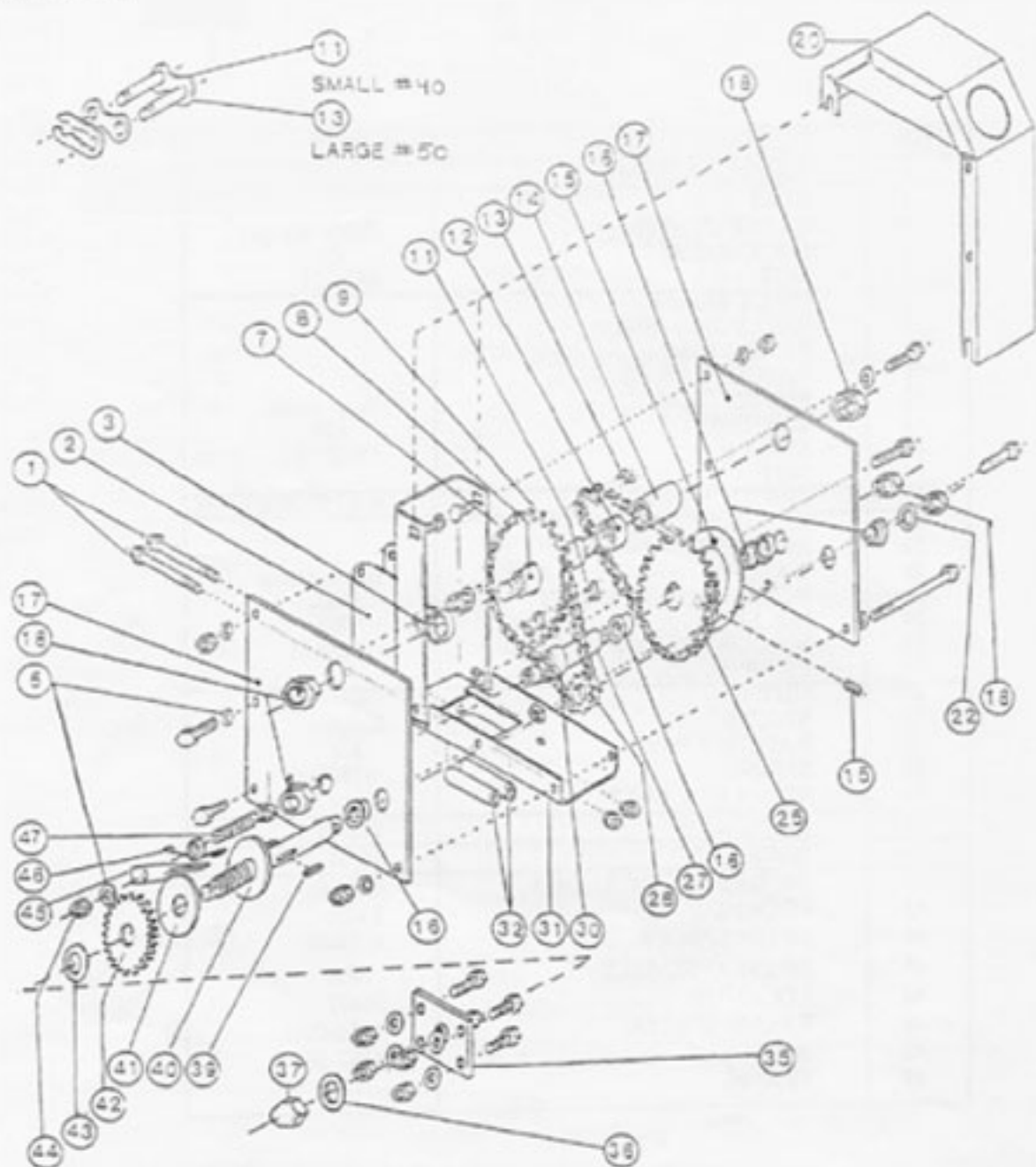
## APPENDIX D: VL FULTON K2550 WINCH USED ON THE VL16092

ITEM	DESCRIPTION	K2550
1	HANDLE ASSEMBLY	2461-01
4	BOLT	
5	CABLE CLAMP	Cable Keeper
6	LOCKWASHER	Kit
7	NUT	5621-01
8	INPUT SHAFT	
9	RETAINING RING	
10	BRAKE DISC	
11	RATCHET GEAR	
12	PINION GEAR	Input Shaft
13	BUSHING	Kit
15	SPACER	1565S01
16	NUT	
17	FRICTION DISC	Kit 1578S00
18	BUSHING	
21	BUSHING	
22	WASHER	Intermediate
23	INTERMEDIATE SHAFT	Shaft
24	ROLLPIN	Kit
25	WOODRUFF KEY	1568S01
26	GEAR	
27	NUT	
28	SPACER	Ratchet
29	RATCHET PAWL	Kit
30	SPRING	6730S00
31	SHOULDER BOLT	
33	CAPSCREW	218-01
34	LOCKNUT	36-01
42	DRUM BOLT T-GRADE 5	6395-01
43	LOCKNUT	83-01
44	DRUM SPACER	6394-01
45	DRUM ASSEMBLY	N/A
46	LOCKNUT	36-01
47	FRAME SPACER	6586-01(2)
48	BOLT	6587-01
49	FRAME	N/A



QUALITY IS NONE

# APPENDIX E: VL R15 CHAIN WINCH USED ON THE VL26100, VL26108, VL26108P, VL36108, VL36116 & VL46116 LIFTS



**APPENDIX E: VL R15 CHAIN WINCH  
USED ON THE VL26100, VL26108, VL26108P,  
VL36108, VL36116 & VL46116 LIFTS**

REF#	PART #	QTY	DESCRIPTION
1	06292M	2	1/2-13 x 4 HEX HEAD CAP SCREWS
2	09006	1	CW END COVER
3	09044	1	CW SPROCKET SPACER - SMALL
4	06377M	1	3/8 HEX NUT
5	06406M	1	3/8 SAE WASHER
6	06481M	4	3/8-16 x 1 CARRIAGE BOLT
7	08999	1	CW SHAFT #3
8	06039	1	CW R15 CHAIN (33 LINKS)
9	09022	1	#40 CONNECTING LINK
10	09009	1	CW SPROCKET ASSEMBLY
11	09008	1	CW DRUM CHAIN (#50 CHAIN)
12	00606	1	7/8 BEARING SLEEVE
13	09023	1	#50 CHAIN CONNECTING LINK
14	09043	1	CW SPROCKET SPACER - LARGE
15	09046	1	CW DRUM W/ SET SCREW
16	00607	4	FLANGED BEARING
17	09002	2	CW WINCH WALL
18	06191M	5	3/4-16 JAM NUT - ESNA
20	06280M	4	1/2-13 x 1 HEX HEAD CAP SCREW
21	09035	1	CW GUARD
22	06417M	1	3/4 SAE WASHER
23	06267M	1	3/8-16 x 6 HEX HEAD CAP SCREW
25	09019	1	SPROCKET - 50A36 x 2" BORE
26	09000	1	CW SHAFT #1
27	09014	1	SPROCKET - 50A36 x 1" BORE W/ KEYWAY
28	06142M	2	1/2-13 LOCKNUT - ESNA
29	08020	1	CW ROLLER BRACKET
30	09045	1	CW DRUM SPACER
31	05357	2	ROLLER - 7/8 OD TUBE
34	09007	1	CW WHEEL HUB
35	06400M	1	1/2 SAE WASHER
36	06192M	1	1/2-20 ACORN NUT
37	06149M	1	3/8-16 FLANGED LOCKNUT
38	06457	1	KEY STOCK - 1/4 x 1/4 x 1-1/8"
39	08998	1	CW SHAFT #2 ASSEMBLY
40	03833	1	FRICTION DISC
41	09033	1	CW BRAKE SPROCKET
42	06149M	5	3/8-16 FLANGED LOCKNUT
43	00601	1	THRUST WASHER - OILITE
44	09029	1	CW PAWL
45	06057	1	CW RATCHET SPRING
46	06489M	1	3/8-16 x 2 SOCKET HEAD SET SCREW

R & G MARINE PRODUCTS

83 ANDERSON ROAD

BUFFALO, NY 14225

© LEFFLER, SERIES INSTRUCTIONS.XLS



QC 4113 2" to 1002

## VERTICAL LIFT OPERATION & PRECAUTIONS

Fully read and understand assembly instructions and safety precautions before operating the boat lift. Doing so will insure its dependability and most importantly YOUR SAFETY. Please contact your R & G Dealer if you have any questions.

### ! SAFETY PRECAUTIONS !

**DO NOT operate this lift without first studying instruction package. Failure to follow these steps will result in uncontrolled spin-down of lift and possible serious injury.**

- 1) DO NOT release winch brake pawl.
- 2) Make sure brake mechanism is operative.
- 3) Handwheel must be turned clockwise for lifting. (Brake pawl must click)
- 4) Check cables for corrosion or fraying. Replace cable if this occurs.
- 5) NEVER permit children and/or adults to play on, under or near boat lift.
- 6) COMPLETELY REMOVE any user or dealer installed locking devices before operating lift.
- 7) DO NOT allow people in boat when it is raised, or when lift is being operated.

### RAISING THE PLATFORM:

The handwheel or power drive must turn clockwise when raising the platform. NEVER raise the platform by turning the handwheel counterclockwise, as this will result in an uncontrolled spin-down of the lift - a potentially dangerous situation. Personal and equipment injury can result from not following this rule. The brake pawl will click when brake is operative. This clockwise rotation allows the self-activating brake mechanism to both hold the platform in the up position and provide a controlled lowering. NEVER flip the brake pawl of the winch, as this will cause an uncontrolled spin-down. This winch is designed so the user never has to flip any ratchets before lowering the lift. DO NOT continue to raise boat after platform reaches maximum lifting height. Personal and equipment injury can result.

### LOWERING THE PLATFORM:

The handwheel or power drive must turn counter-clockwise when lowering the platform. Personal and equipment injury can result from not following this rule. This counter-clockwise rotation allows the self-activating brake mechanism to provide a controlled lowering of platform. NEVER lower the platform by turning the handwheel clockwise. NEVER flip the brake pawl of the winch, as this will cause an uncontrolled spin-down. This winch is designed so the user never has to flip any ratchets before lowering the lift. DO NOT continue to lower the lift after the boat floats freely from the platform or if the winch cable goes slack. Lift and winch damage may result.

### CHECKING WINCH OPERATION:

Raise the empty platform about 2 ft and release your grasp on handwheel. A properly operating winch will automatically hold the platform at any position. Perform this same test at progressively higher positions. Next, repeat this same procedure with boat on the lift. If the handwheel begins to freely spin down from any of these positions, DO NOT attempt to prevent it from doing so. Such action could result in serious personal injury. If your winch does not function as described, contact your R & G dealer for service. Do not tamper with the winch mechanism.

### MAINTENANCE TIPS:

Your R & G lift requires little maintenance work. We do suggest \*Grease the chains & bearing inside winch \*Grease cables & sheave bearings \*Grease winch hub. (When greasing hub, lower platform until it rests on platform stops. Remove acorn nut on handwheel and turn counterclockwise to remove wheel, so the input shaft threads are clearly exposed. Grease threads, avoid contaminating fibrous brake disk, thread wheel back on until brake pawl begins clicking. Reinstall and tighten acorn nut)